

# Picture Postcards of Port Hood NS

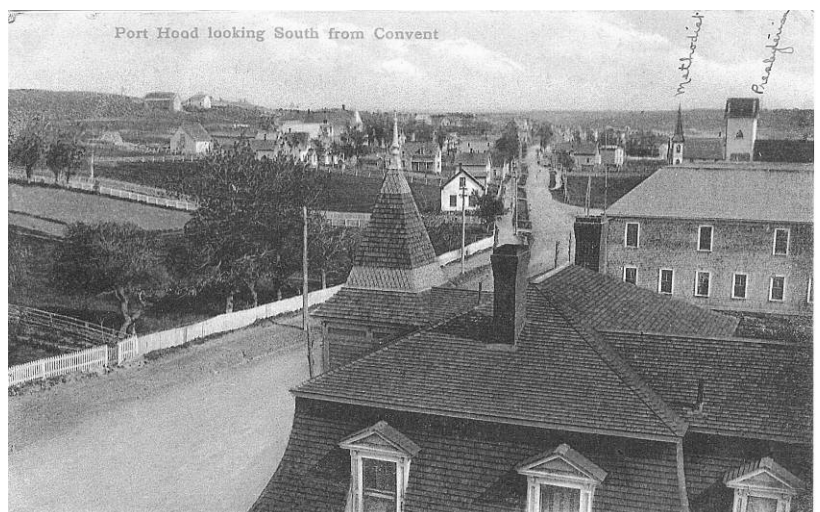
by Gordon Smith

I am sure just about everyone in the group knows of my interest in postal history related to Port Hood and Port Hood Island. I have a long family history there, going on about 225 years now! I collect postal history related to the area. This article shows various postcards I have come across. eBay is an amazing resource ... the bulk of these items have been obtained in the last 6 years from that source. A couple of the images are copies of items from other people's collections and have been noted.

Modern aerial view looking south along the main road through town. The colour card describes the scene as "Port Hood – a village resting on the beautiful beaches along the western shore of Cape Breton, N.S. The photo was taken by Warren Gordon, Images of Cape Breton. The card, by Cape Breton Post Cards, was printed by The Casket in Antigonish, N.S. and is labeled CP6.5-85-580. The card is unused.



The colour card entitled "Port Hood looking South from Convent" shows an historic view from the early 1900's looking south along main road through town. The handwritten notes label the Methodist and Presbyterian Church spires. The card was published by "Barnes and Rayworth, Salisbury, N.B. for D.J. McKay of Port Hood, C.B." The card is postmarked 1916. The original is in the collection of Helen Buerger of Illinois.



This real photo card shows the view north over the town with Port Hood Island in the background. The card is unused. It has no publisher listed on the rear and only states "Made in Canada" with the initials "AZO" outlining the four sides on the label "Place Stamp Here" in the upper right of the card.



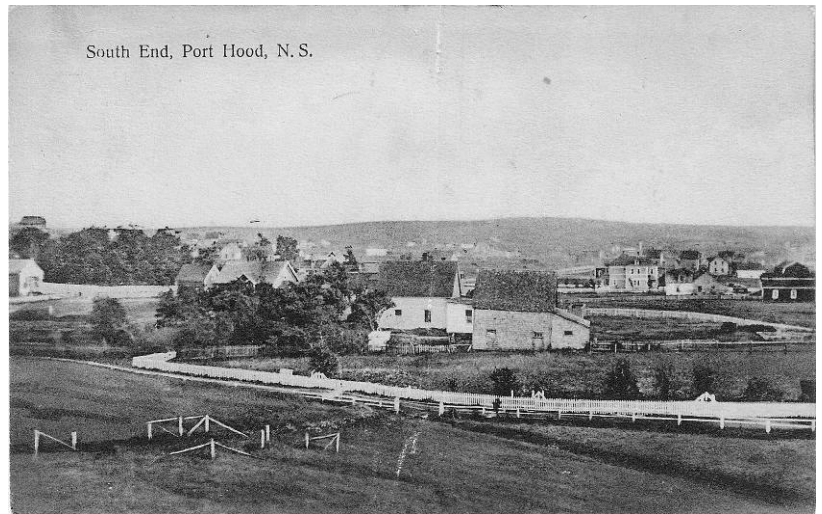
This real photo card showing the view over the central portion of the town with Port Hood Island in the background is labeled on the back in the same manner as the previous card. The card is unused.



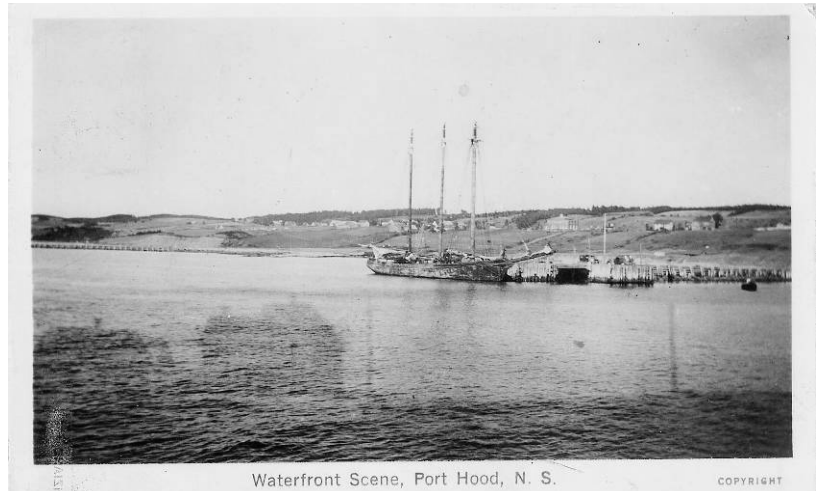
This real photo card showing the view over the southern end of the town with Port Hood Island in the background is labeled on the back in the same manner as the previous two cards. Henry Island (which had a summer office in the late 1800's and early 1900's postmarked "Outer Island of Port Hood") is faintly visible on the horizon behind Port Hood Island. The card is unused for postal purposes but describes the owners of the various buildings.



This card shows a more southerly view with the mainland as the background. Printing on the rear states "Edition J.E. Evans. Manufacturer and Dealer in Pictorial Post Cards, Port Rowan, Ont. Made in Germany." The card is postmarked 1934.



This real photo card showing a three-masted schooner at the Government Wharf is one of my favourite post cards of Port Hood. This wharf is still in use and I have many old (and much more recent (i.e. this summer) memories of using this wharf to access Port Hood Island. The shadows in the foreground are perhaps the result of a double exposure as there is no land in the location from which the photo is taken. Note the crib work in the left side of the photo ... it is related to the card below. Printing on the rear of the card indicates it was published by the "Canadian Post-Card Co. Ltd., Toronto 3". "Printed in Belgium" is faintly visible in between the underlining of the title "Post Card". The card is postmarked 1952.



This card entitled "Scene from Breakwater, Port Hood, N.S." is a real photo card showing a boat hauling a barge with rock for the construction of a causeway connecting Port Hood Island to the mainland. The causeway was constructed out of local sandstone. A hurricane destroyed it after only three days of operation and it became known as "the breakwater". Printing on the rear indicates that the card was also published by the "Canadian Post Card-Co. Ltd., Toronto 3", and it is postmarked 1952.



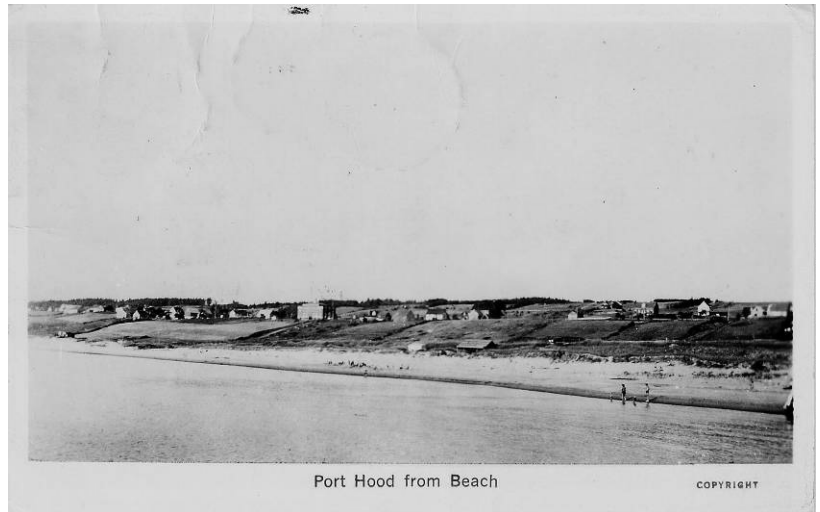
This real photo card shows a scene looking across the central pond on Port Hood Island. The white house on the top of the hill to the right is my family home. With the change of lifestyle in the 1960's (fewer people kept farm animals) and the departure of permanent residents in the 1980's, the landscape has become much more forested. The back of the card contains no information about the publisher other than "Printed in Canada" although the stamp indicia shown below shows a logo that appears to be composed of the initials CKE (see enlargement). The card is unused.



SCENE ON PORT HOOD ISLAND - CAPE BRETON



This real photo card shows the view looking north from the end of the Government Wharf (see card on previous page) before the causeway was built. It was also published by the "Canadian Post Card-Co. Ltd., Toronto 3". The postmark on the card is unclear, but the stamp are two QEII 2¢ Wildings.



Port Hood from Beach

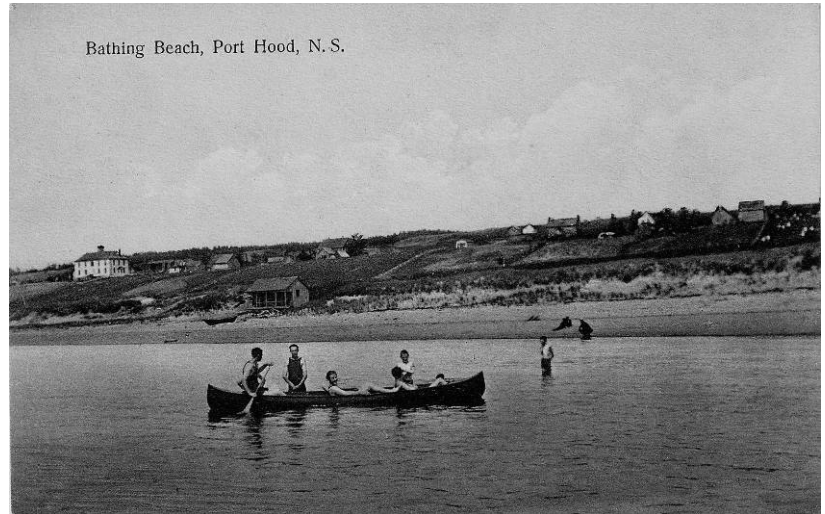
COPYRIGHT



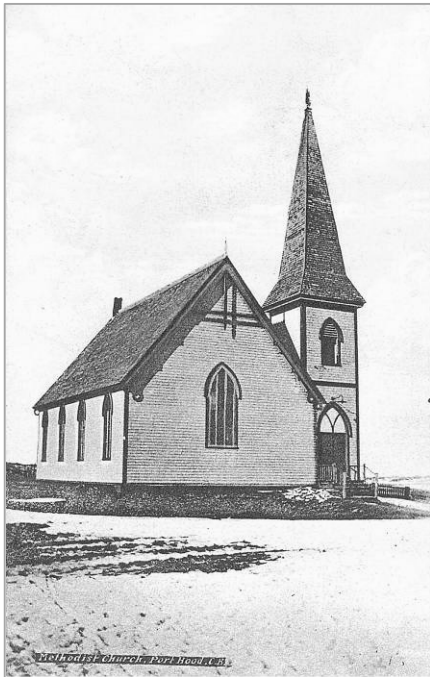
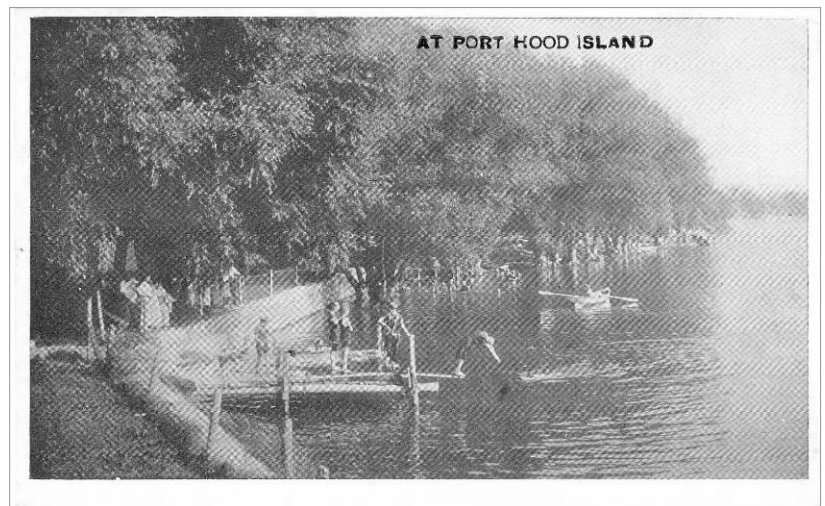
THE BATHING BEACH, PORT HOOD, C.B.

This real photo card entitled "The Bathing Beach, Port Hood, C.B." shows the view looking north from the foot of the Government Wharf after the causeway was built. This card has serrated edges. It was also published by the "Canadian Post Card-Co. Ltd., Toronto 3" and contains the same printing on the rear as the other cards. This card is unused.

This post card shows another view of the beach. The foot of the causeway can be seen on the left side of the photo. Printing on the rear states "Edition J.E. Evans. Manufacturer and Dealer in Pictorial Post Cards, Port Rowan, Ont. Made in Germany." While the card is unused, an handstamp in the lower left states a date of "Aug 1935".

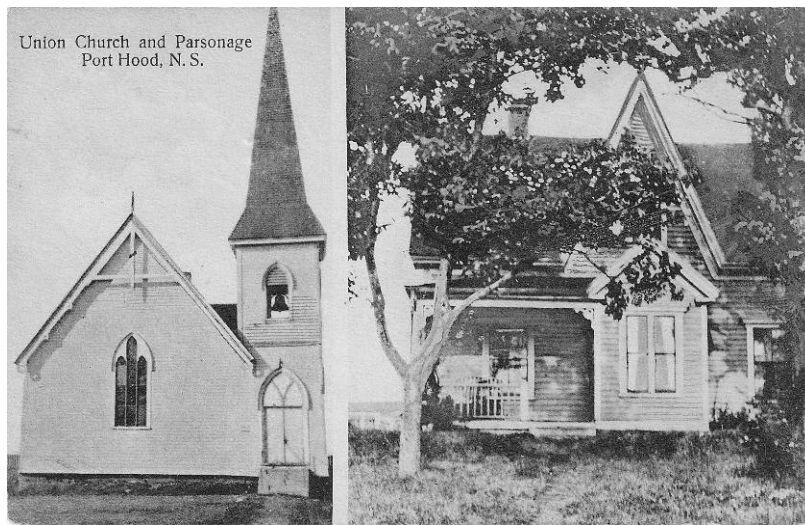


This card while titled "At Port Hood Island" and postmarked Port Hood, is not actually of the island. It is some other place and the title has been added afterwards. The card was "Made in U.S.A. and is titled "No. 2247, 16 des. Photo Brown Bathers". The card is postmarked from Port Hood 1935.

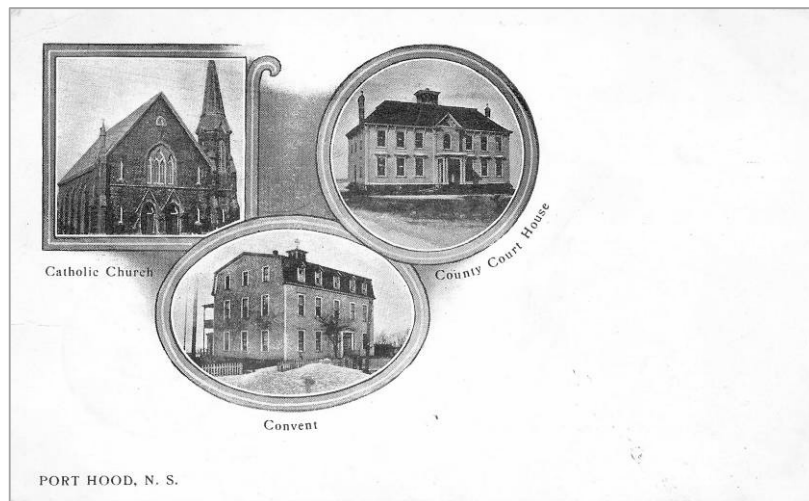


This colour card is labeled on the front as "Methodist Church, Port Hood, C.B." On the back, it states that is was "Printed specially for A.D. McIsaac, Port Hood, N.S." with a numerical code in the lower right of 132695. The postmark on the card is unclear, but the year ends with a 2, and the stamp is a King George VII 1¢. The original card is in the collection of Helen Buerger of Illinois.

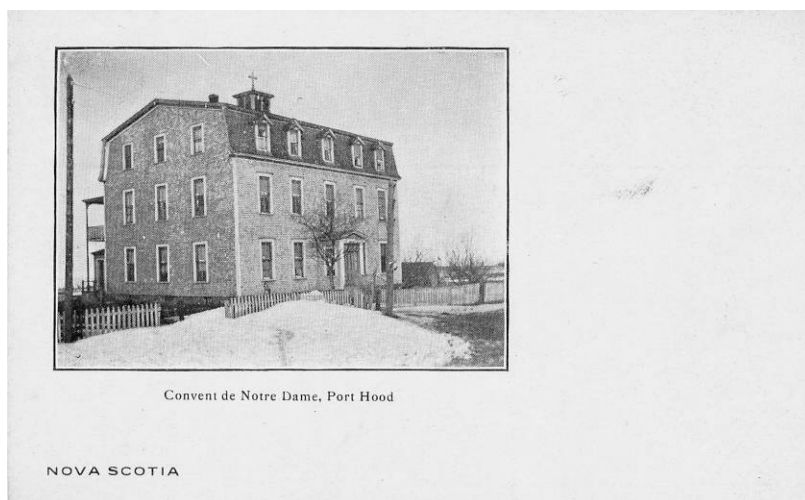




On this card, this church is described as the Union Church. The card is postmarked 1939, which is after the creation of the United Church of Canada, which perhaps explains the name change of the church as compared to the previous card. Printing on the rear states "Edition J.E. Evans. Manufacturer and Dealer in Pictorial Post Cards, Port Rowan, Ont. Made in Germany." The card is postmarked 1939.



This card shows photos of the Catholic Church, the Convent and the County Courthouse in Port Hood. Printing on the back indicates that "News Publishing Co., Limited, Truro N.S.", published it. The card is postmarked 1907.

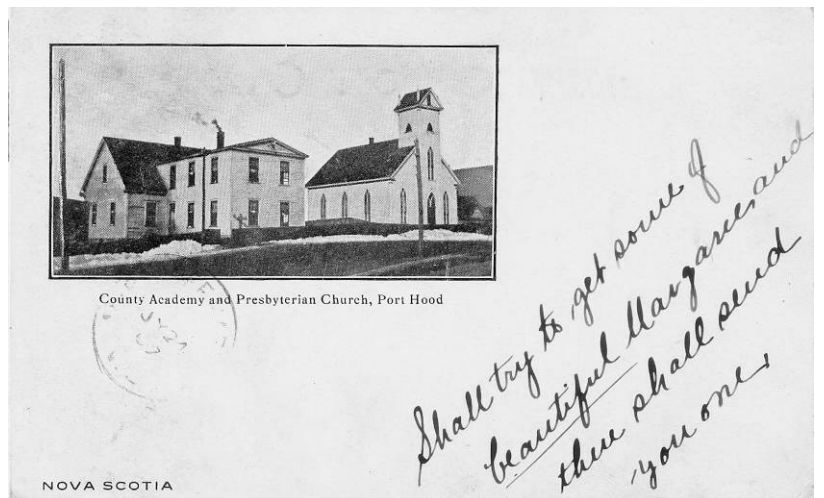


This card's photo of the "Convent de Notre Dame, Port Hood" is the same one that was used in the previous card. "News Publishing Co., Limited, Truro N.S." also published this unused card.

Although this card of the “Court House, Port Hood, C.B.” was published by “Barnes and Rayworth, Salisbury, N.B. for D.J. McKay of Port Hood, C.B.”, the picture appears to be the same as the one used in the previous card showing a number of important buildings in Port Hood by News Publishing Co. Limited of Truro. The angle of the shot and the shadow pattern of the portico on the front of the building are identical and the steps on either side of the building appear to be hanging in mid-air. The original card is hand-tinted colour and is postmarked 1909.



This card showing the County Academy and Presbyterian Church was published by News Publishing Co., Limited in Truro NS. I have two copies of this card; one is postmarked 1907 and the other 1911.



This card entitled “Post Office Square” is looking south. I am not sure if any building in the photo was the Post Office. (Original card is in the collection of Hugh Rathbun.)





This card entitled “Post Office Corner” is looking north. This photo is taken in the opposite direction of the previous card and the building on the right is the one in the centre of the card above. While I am not sure if any building in the photo was the Post Office at the time, the darker building in the centre with the gambrel or barn roof has been replaced by a modern brick Post Office building. (Original card is in the collection of Hugh Rathbun.)



This photo by Hugh Rathbun showing the modern post office sign altered to read “Pot Head” and “Canada Pot”, while not a card is an interesting piece of postal history showing what a little imagination can do.