

The Postmarks of Port Hood

Port Hood is located on the western side of Cape Breton Island, Nova Scotia (see Figure 1). It is the shiretown for Inverness County, and a way office was opened in 1829, but no hammer was provided until a post office was established in 1841.

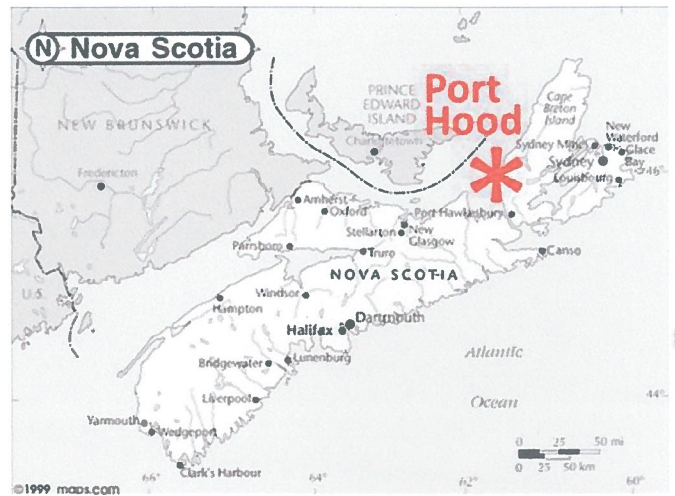
While it is a small community, it has had many postmarks since the first hammer was sent from London England on 12 November 1841. The first broken circle mark was provided before confederation although research has not provided a proof date. The first post-Confederation mark was a broken circle proofed on 23 November 1876.

Various other marks including MOONs (Money Order Office Numbers) and POCONs (Post Office Computer Organization Number) have used up to the current round commemorative mark and rectangular "winged" marking. This exhibit illustrates the many postmarks associated with this community.

The term "Recorded Date" denotes references provided in texts. "Known Date" denotes items that the author has seen or owns. Unique items have been marked with a red dot. Rarer material has been denoted with a blue dot. The rarity of the later items illustrates the difficulty in obtaining modern material.

Double Broken Circle Paid Mark - 1841

This instrument was sent to the Secretary, General Post Office for Dispatch from London to Halifax on 12 Nov. 1841. When the instrument was received is unknown, but was unlikely to be, before January 1842 (MacDonald 1985). Robson Lowe (1973) reports use of this mark to 1867. At the time, prepaid letters were to be struck in red.



diameter = 29mm
Proof strike
illustrated in
Munden, 1987.
MacDonald, 1985
notes only 10 or
less known copies
of this mark.

18 Jan. 1849
Struck in red.
Manuscript "Paid
11½" to right of
mark.

This is the only mark
in red of which the
author is aware.

15 Oct. 1854
Struck in black.
Manuscript "Paid" to
left of mark and noted
as prepaid in lower left.



Double Circle Crown Mark

1842

This mark, as one of only 5 crown markings issued in Nova Scotia, is unusual as crowns were generally saved for office seals and not for postmarks.



diameter = 31mm

Postmark
illustrated in
MacDonald, 1985.

Recorded period
of use:

14 Mar. 1842
to
28 Dec. 1842
(MacDonald, 1985)

MacDonald, 1985
notes only 5 or less
known copies of
this mark.

Broken Double Circle Mark

1843

Munden (1987) illustrates 2 similar proofs of this mark. When overlaid, they are virtually similar, with the exception of the dot after the "S" in the earlier mark. In reviewing a half a dozen copies of this relatively rare mark, the author has not seen any with the dot following the "S".



diameter = 29mm

(measured from postmark)

Proof strike
illustrated in Munden,
1987. Also in
MacDonald, 1985,
without denotation as
proof strike.



diameter = 31mm

(measured from illustration in
Munden, 1987)

Proof strike
illustrated in
Munden, 1987.

Earliest Possible Use:
23 Feb. 1843
(MacDonald, 1985)

Latest Known Date:
10 Feb. 1864
(collection of author)

Numeral Rate Marks

These marks were used where there were many letters to mark and doing so by hand would be time consuming. These marks are not likely officially distributed and may have been locally made.

3

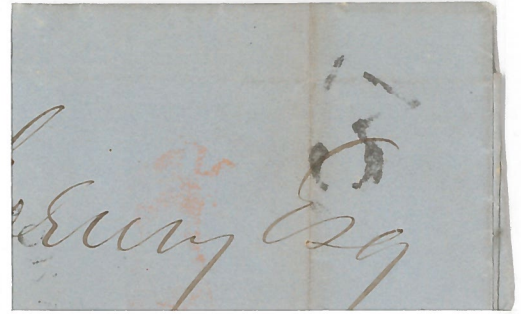
3 Pence Mark, 9 August 1858.

In use from 2 Aug. 1857 to 9 Aug. 1858.

Cover is frontstamped with Broken Double Circle Mark.

Represents rate for ½ oz. letter within the colony.

MacDonald, 1985 notes 5 or less copies in private hands.



10

10 Cent Mark, 2 August 1865.

Cover is backstamped with 26 August 1865 Preconfederation Split Ring Mark.

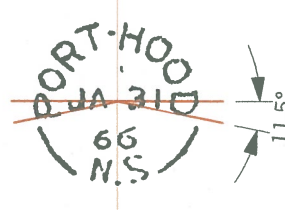
Represents First Class Single rate from Port Hood to the USA.

MacDonald, 1985 notes only one copy in private hands; This is a second example.



Both marks illustrated in MacDonald, 1985.

Split Ring Mark Pre Confederation



Postmark illustrated in Munden, 1987 without denotation as proof strike.

Earliest Known Date of Use:
26 Aug. 1865

Latest Known Date of Use:
17 Feb. 1872
(both in collection of author)

Notes on Postmark:

1. diameter = 20.5mm
2. "P" and "D" in Port Hood extend below horizontal line through middle of postmark
3. no period after "S" in Nova Scotia
4. dash between "PORT" and "HOOD"

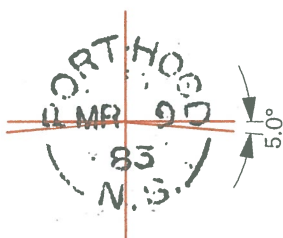
Note: All examples used with "provincial grid" as defacing mark on stamp.

Unlisted Registration Mark on Cover with 1866 Postmark

This example, dated 7 Aug. 1885, is the only known instance of this registration mark.



Split Ring Mark 1883



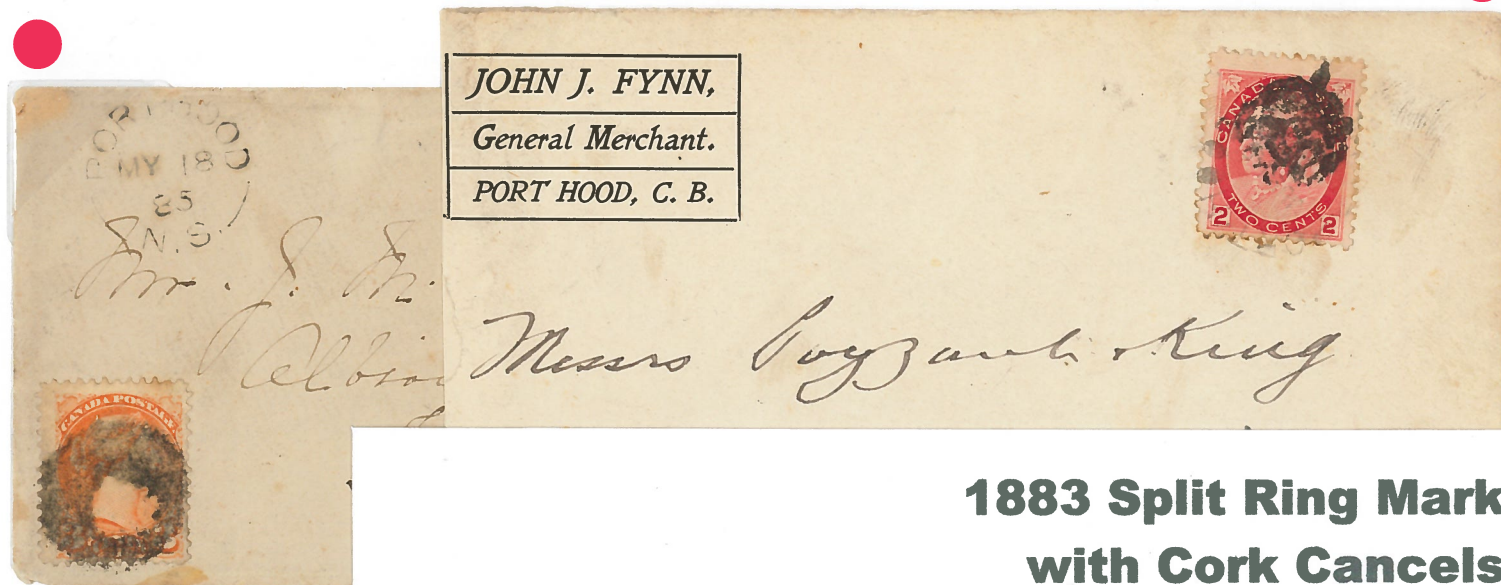
Proof strike
illustrated in
Hughes, 1990.

Earliest Known Date of Use:
19 May 1884
(in collection of author)

Latest Known Date of Use:
11 Feb. 1909
(in collection of author)

Notes on Postmark:

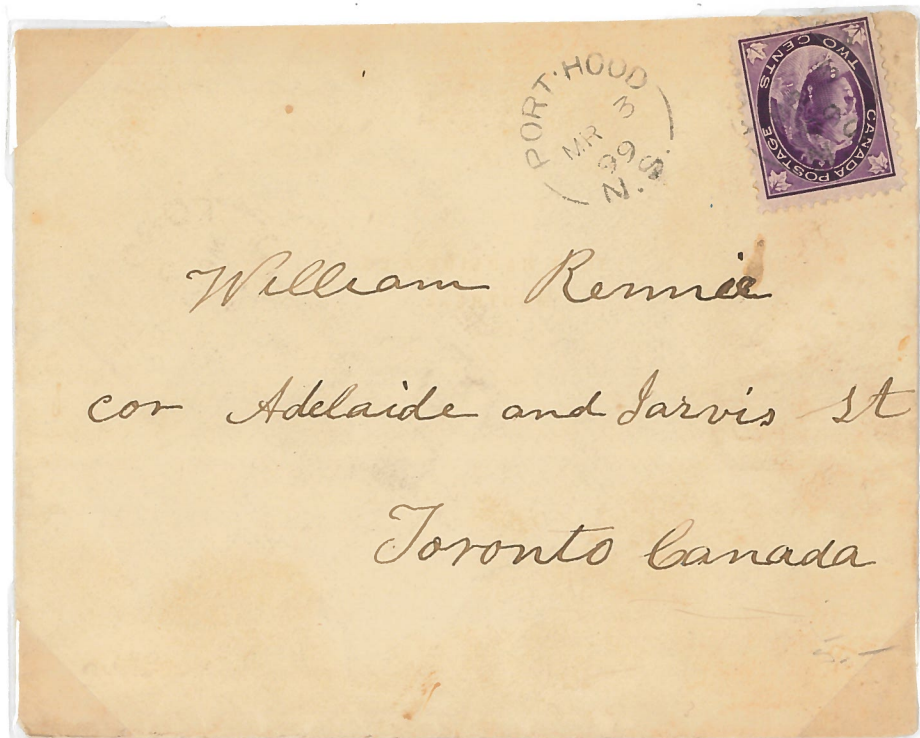
1. diameter = 22mm
2. "P" and "D" in Port Hood extend below horizontal line through middle of postmark
3. period after "S" in Nova Scotia
4. dot between "PORT" and "HOOD"



**1883 Split Ring Mark
with Cork Cancels**

Split Ring Mark

1892



Earliest Known Date of Use:

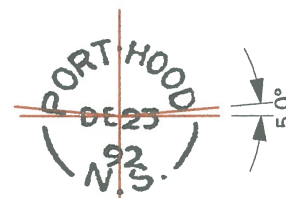
7 Jun. 1895

(in collection of author)

Latest Known Date of Use:

9 Oct. 1903

(in collection of author)

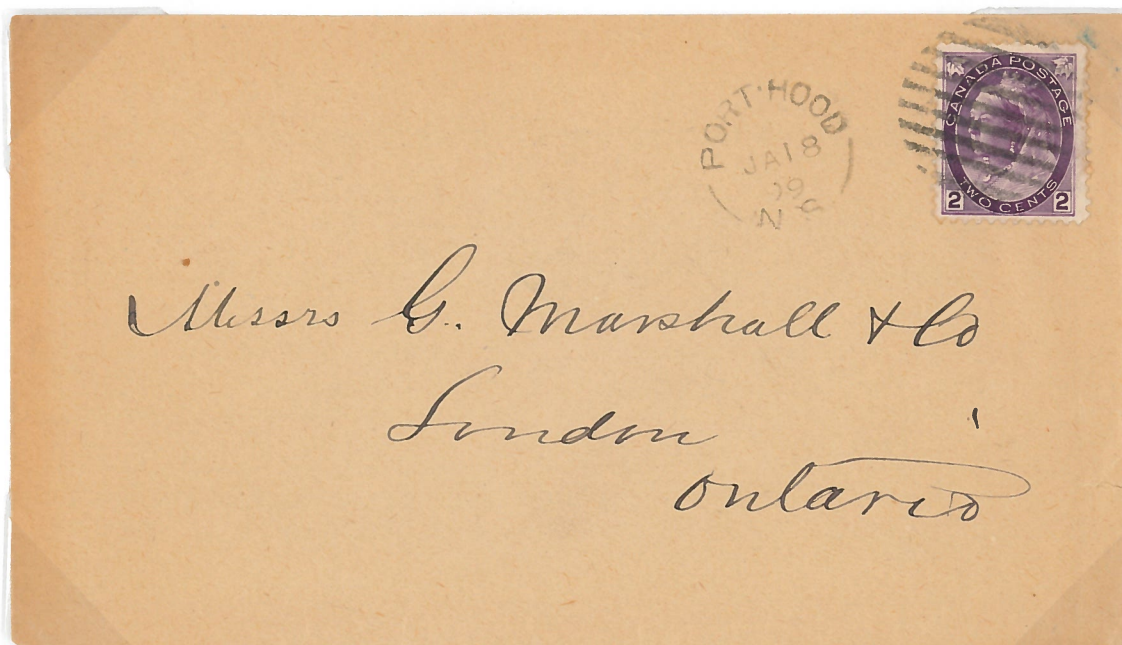


Proof strike
illustrated in
Hughes, 1990.

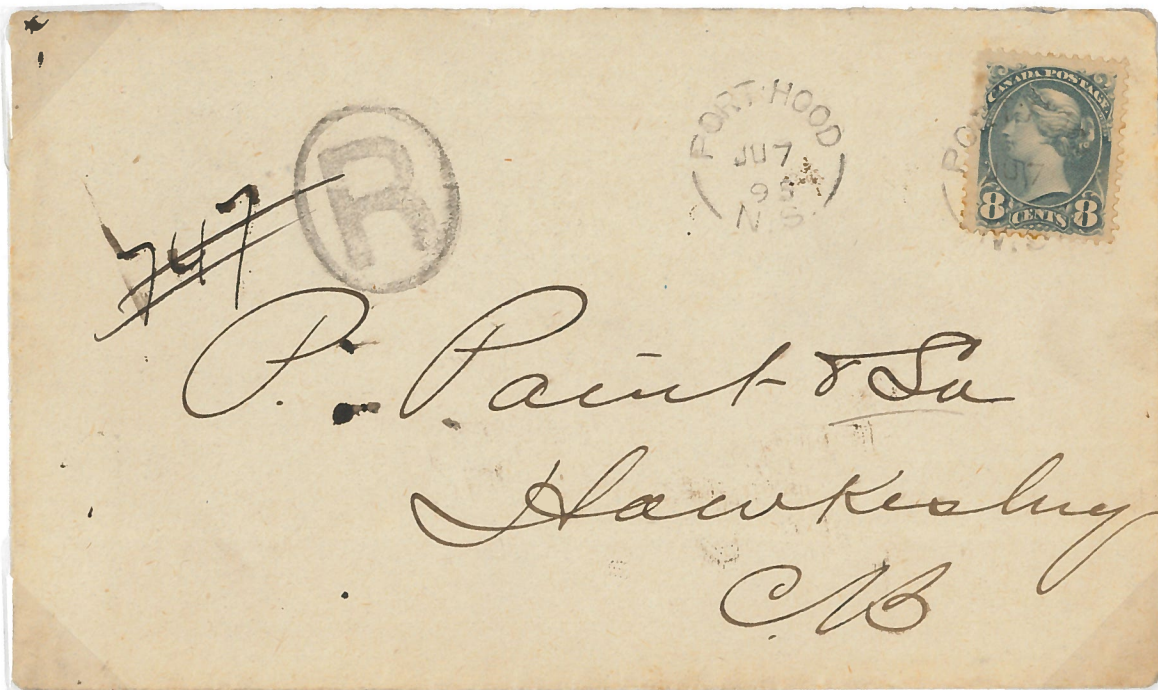
Notes on Postmark:

1. diameter = 21mm
2. "P" and "D" in Port Hood are above horizontal line through middle of postmark
3. period after "S" in Nova Scotia
4. dot between "PORT" and "HOOD"

1892 Split Ring Mark with additional barred cancel



1892 Split Ring Mark with Registration Mark



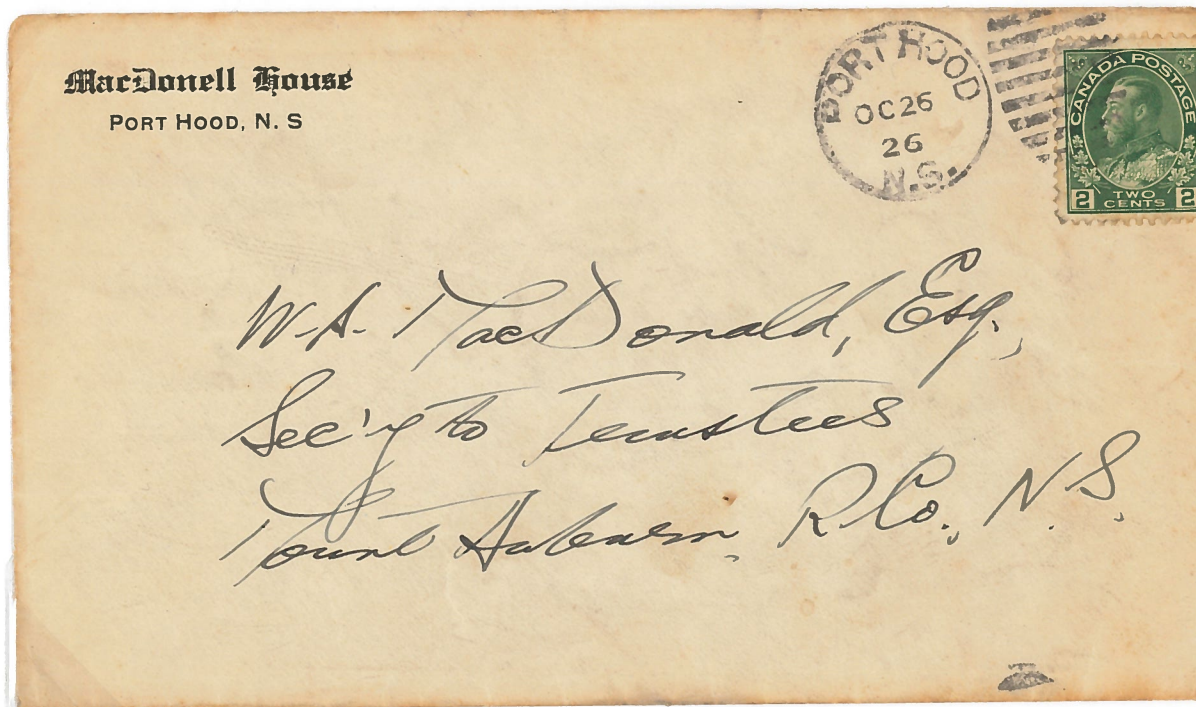
Earliest Known Date of Use
for registration mark:
13 Aug. 1892

(both in collection of author)

Latest Known Date of Use:
for registration mark:
11 Feb. 1909

No references have a
record of this
registration mark.

Duplex Mark - 1912 (Cloutier: DNS 309)



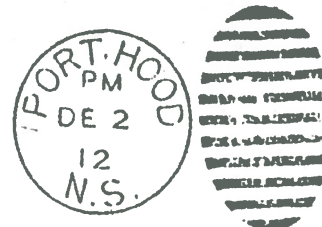
Earliest Known Date of Use: 6 Jan 1915

Latest Known Date of Use: 26 Oct. 1926

(both in collection of author, Cloutier 2005
does not provide period of use information)

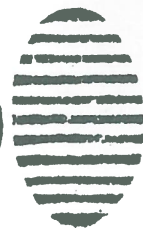
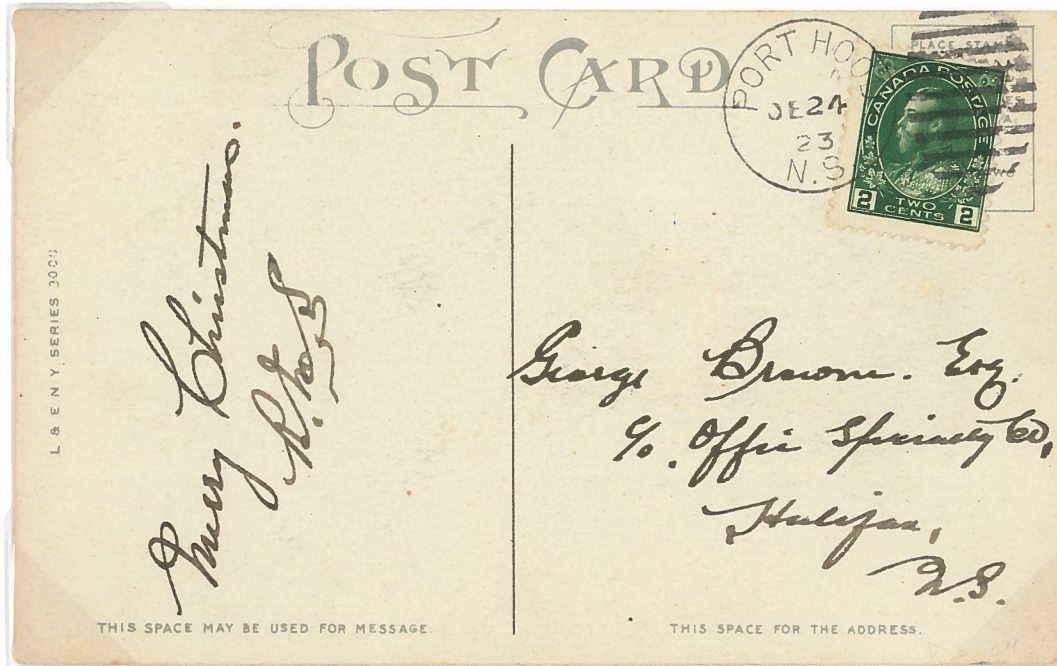
diameter = 23.5mm

Proof strike
illustrated in
Hughes, 1990b.



Duplex Mark

1917 (Cloutier: DNS 311)



diameter = 22.5mm
note that the letters 'O'
and 'D' area narrower
that in 1912 mark.

Proof strike illustrated
in Hughes, 1990b.

Earliest Reported Date:
27 Aug. 1920

Latest Reported Date:
20 Feb 1933
both from (Cloutier, 2005)

Note: Author has not seen any mark with an AM or PM indicator.

Full Circle Mark

1923



diameter = 23.5mm
Proof strike
illustrated in Hughes,
1991.

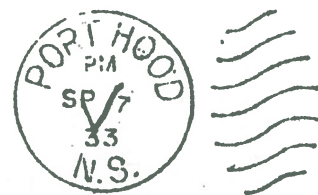
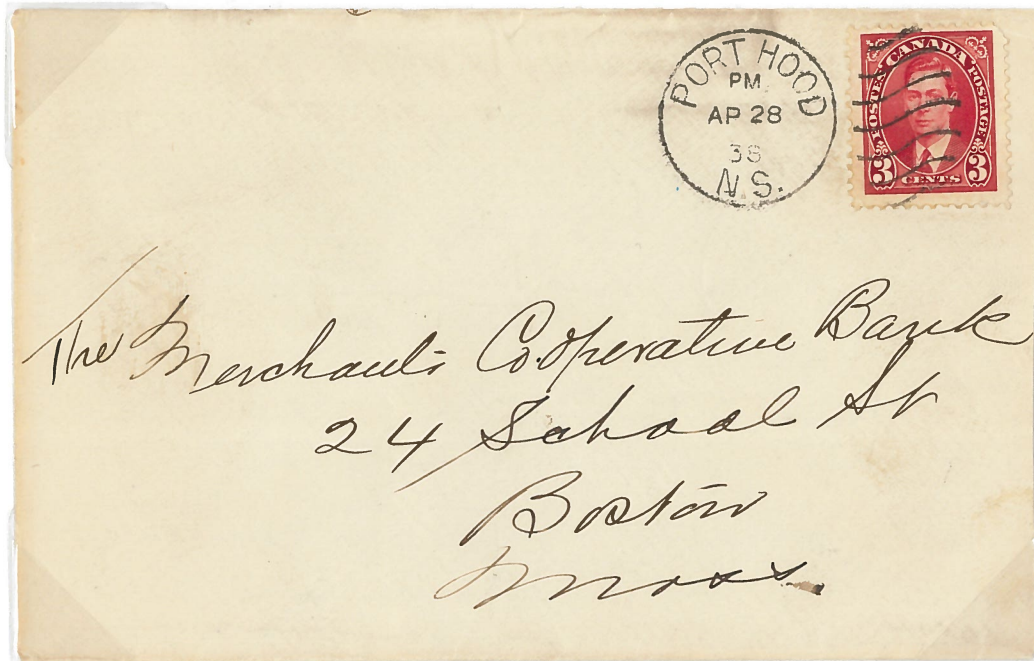
Earliest Known Date of Use:
28 Dec. 1927

Latest Known Date of Use:
25 Feb. 1931
(both in collection of author)



Duplex Mark

1933 (Cloutier: DNS 312/313)



diameter = 23.5mm
Proof strike
illustrated in Hughes,
1990b.

Earliest Reported Date:
11 Aug. 1933

Latest Reported Date:
7 Dec. 1961
both from (Cloutier, 2005)

Registration Mark

1942



Proof strike
illustrated in
Hughes, 1992.



Full Circle Mark 1947



Proof strike
illustrated in
Hughes, 1991.

Earliest Known Use:
16 Jun. 1958

Latest Known Use:
25 Sep. 1958
(both in collection of author)

Despite proof strike showing AM, author
has only seen examples with PM.

Money Order Office Number (MOON) Marking Early 1950's

(Sagar: Type 4)

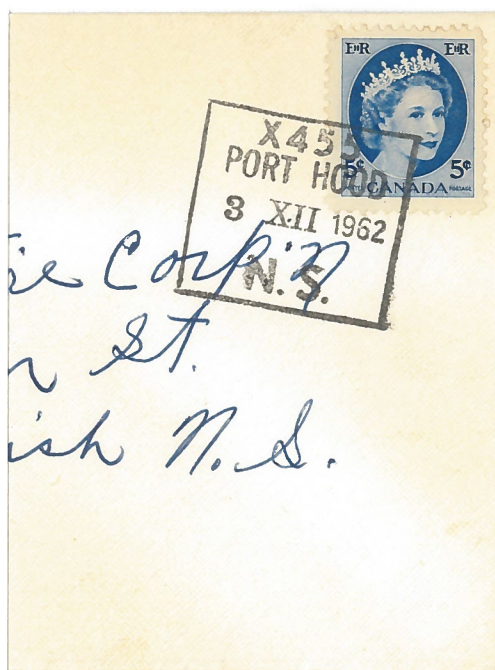
Sagar 1999 provides no proof date, but other marks in NS were proofed in the early 1950's



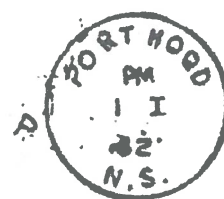
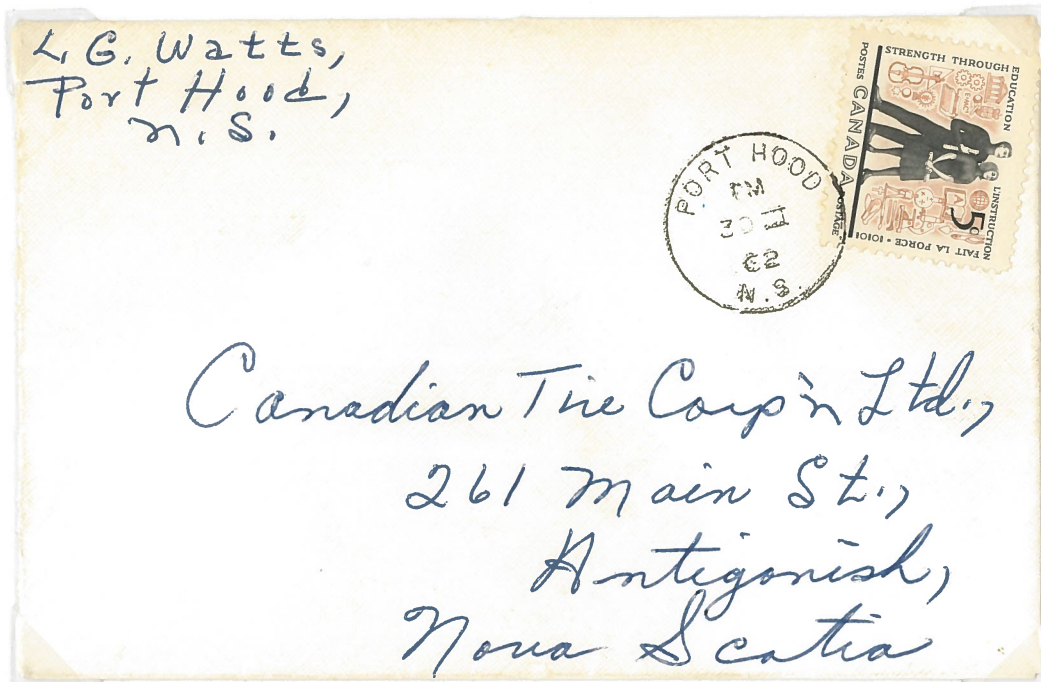
Postmark
illustrated in
Munden, 1993.

Earliest Known Date:
20 Nov. 1962
(in collection of author)

Latest Recorded Date of Use:
9 Oct. 1965
(only listing in Sagar, 1999)



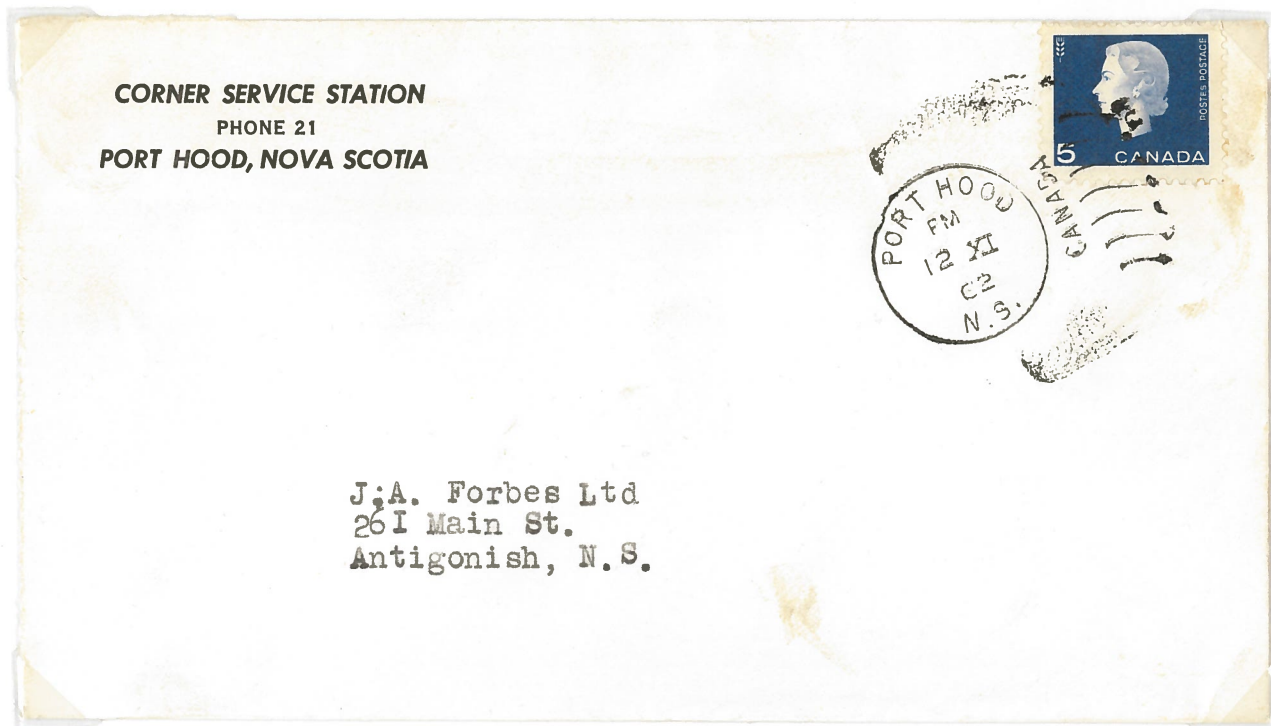
Full Circle Marking 1962



Proof strike
illustrated in
Hughes, 1991.

This is the only known
example:
30 Mar. 1962

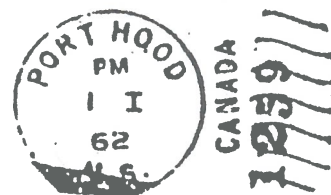
Duplex Marking 1962 (Cloutier: DNS 314)



Earliest Reported Date:
7 Mar. 1962

Latest Reported Date:
16 May 1984
(both from Cloutier, 2005)

Proof strike
illustrated in
Hughes, 1990b.



Machine Cancel

1987



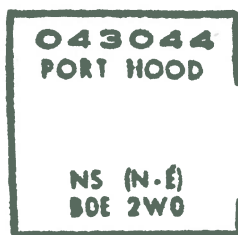
Earliest Reported Date:
20 Mar. 1987
(Munden, 1987)

Latest Known Date of Use:
10 Dec. 1987
(this example)



Postmark
illustrated in
Munden, 1987.

Post Office Computer Organization Number (POCON) No Date

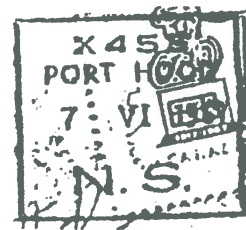


This is the only known
example:
22 Nov. 1994

Mark illustrated
in Munden,
1993.

Money Order Office Number (MOON) Marking No Date

(similar to Sagar: Type 10, but not listed)



Postmark
illustrated in
Munden, 1993.

Earliest Reported Date: Latest Known Date of Use:

7 Jun. 1967

7 Dec. 1970

(Munden, 1993, see
illustration to right)

Money Order Office Number (MOON) Marking Unlisted in reference books

(similar to Sagar: Type 13)



Note location of "X" over "R" rather
than over "O" in previous example

This is the only known
example:

11 Jan. 1973

Post Office Computer Organization Number (POCON) 1970's



Earliest Reported Date:

22 Aug. 1977

(Munden, 1987)

Latest Known Date of Use:

4 Nov. 1984

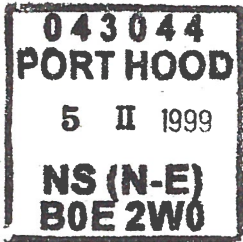
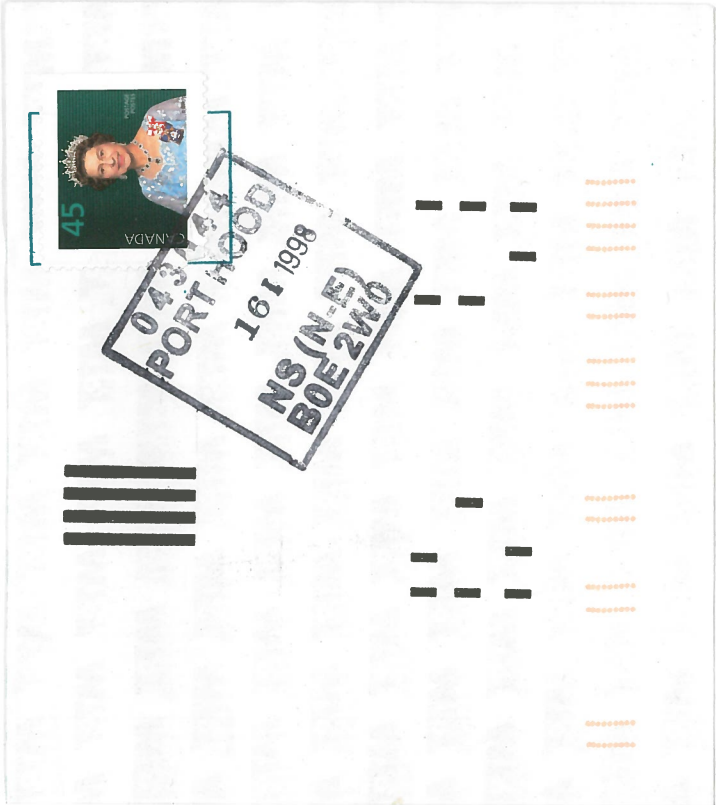
(this example)

Postmark
illustrated in
Munden, 1987.

043044

22 VIII 1977
PORT HOOD
N S

Post Office Computer Organization Number
(POCON)
1990's



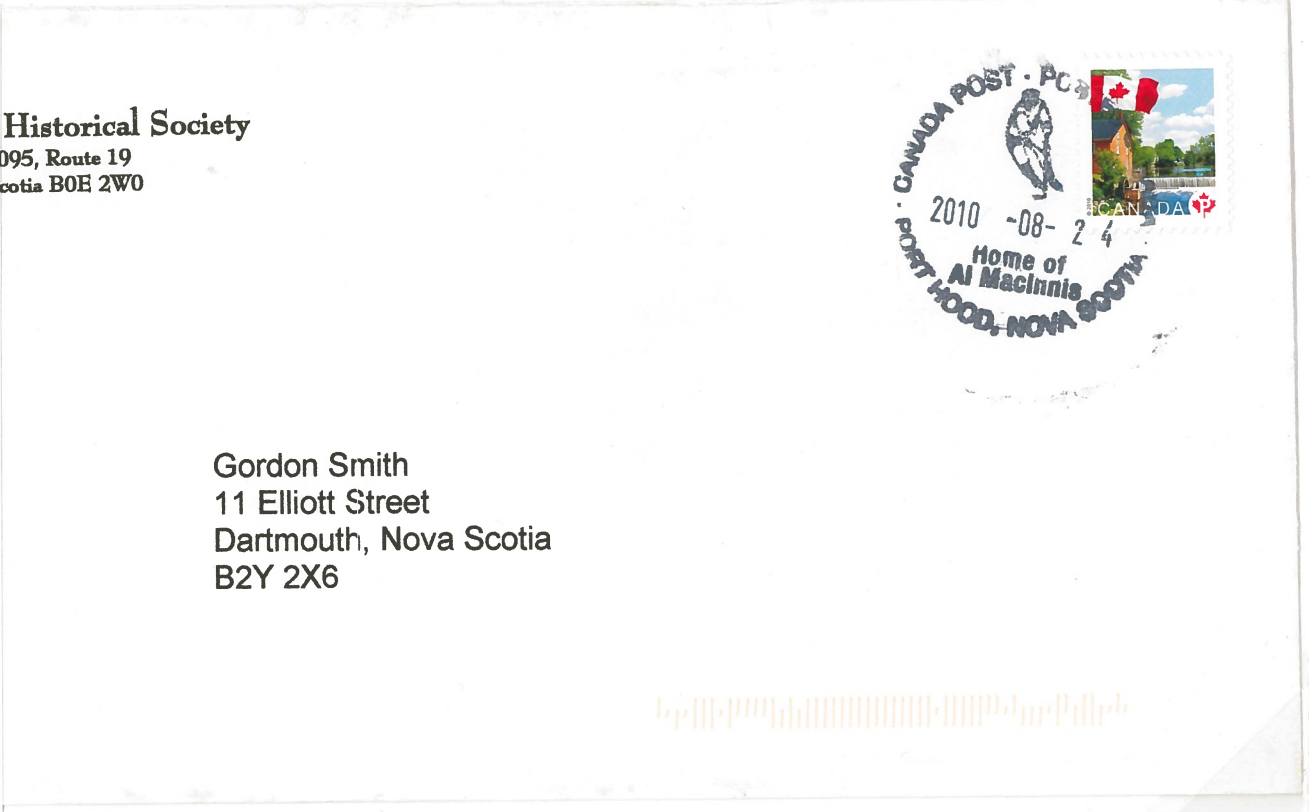
Collection of
Author
Earliest Known Date:
27 Sep. 1996

Latest Known Date:
12 Nov. 1999

Comes in a variety of colours
shading from dark gray/black
through to red.

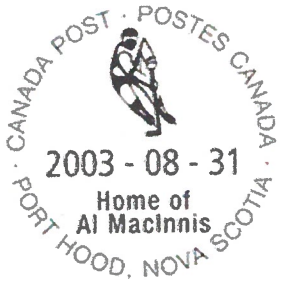
Date stamp seems to be a
separate mark as the location
within the mark and size of
the year stamp can vary.

Commemorative Al MacInnis Marking
2003



Historical Society
095, Route 19
Dartmouth, Nova Scotia B0E 2W0

Gordon Smith
11 Elliott Street
Dartmouth, Nova Scotia
B2Y 2X6

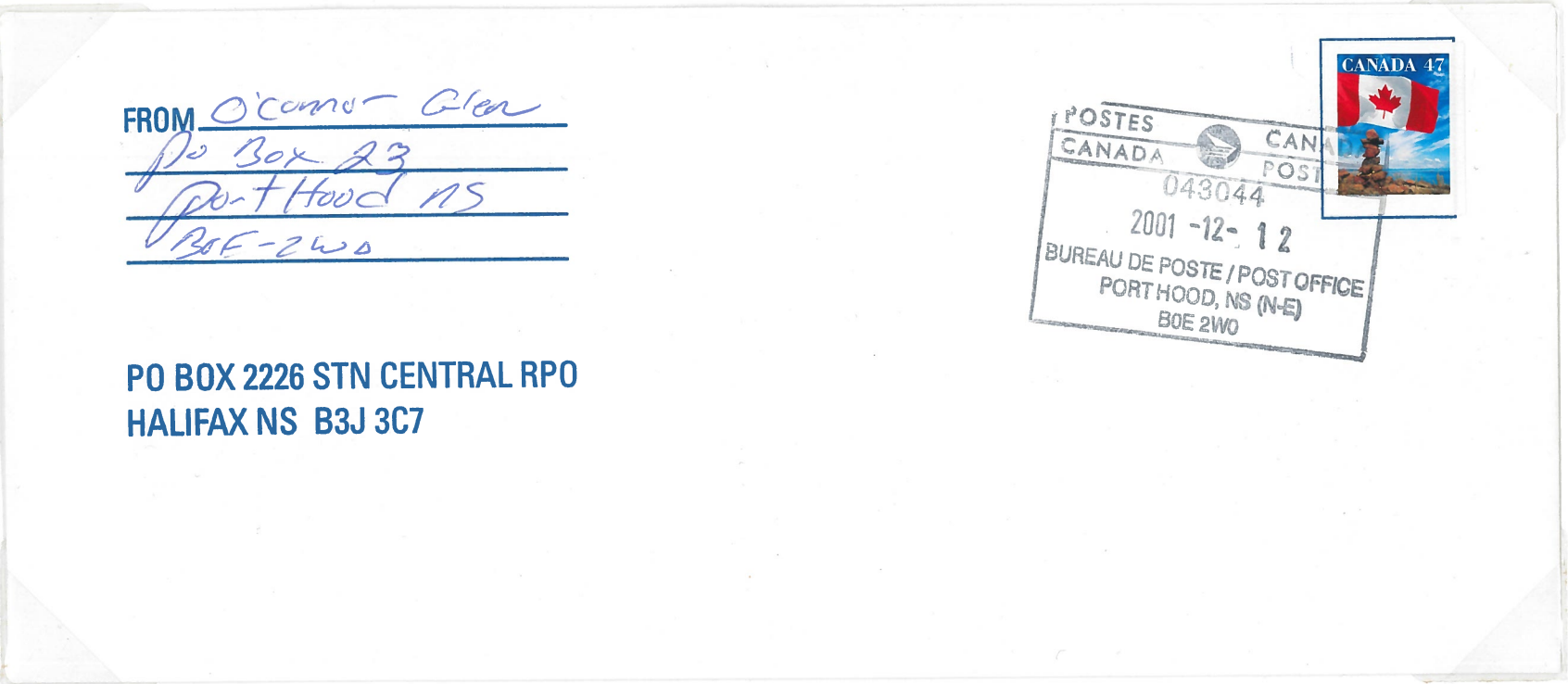


Proof strike illustrated in
Canada Post, 2010

Earliest Known Date of Use:
2 Sep. 2003
(in collection of author)

Latest Known Date of Use:
still in use

Canada Post Wings Mark
1990's



Earliest Known Date of Use:
21 Jul. 2000
(in collection of author)

Latest Known Date of Use:
still in use

Canada Post Postage Label
2010's



Earliest Known Date of Use:
10 Oct. 2010
(in collection of author)

Latest Known Date of Use:
still in use

While this is not a traditional postmark
applied over a stamp, it is a post office
mark applied to an item indicating the date
of mailing, the community from which the
piece was mailed, and the POCON
number. Therefore, the author considers it
to have the same function as a postmark.

Modern Mixed Markings

Combined Al MacInnis Commemorative and Canada Post Postage Label
2010's



References:

Canada Post. 2010. *Canada Post Collecting*. Retrieved from internet on 15 September 2010 from <http://www.canadapost.ca/cpo/mc/personal/collecting/cancels/novascotia/porthood.jsf>.

Cloutier, Stéphane. 2005. *Catalogue of Canadian Duplex Cancellations, Third Revised Edition*. Conestoga Press, Thornbury.

Hughes, J. Paul. 1990a. *Proof Strikes of Canada, Volume IV, Split Circle Proof Strikes of the Maritimes'*. Published by Robert A. Lee Philatelist Ltd., Kelowna, BC. p. 103.

Hughes, J. Paul. 1990b1. *Proof Strikes of Canada, Volume VII, Duplex Proof Strikes of Quebec and the Maritimes'*. Published by Robert A. Lee Philatelist Ltd., Kelowna, BC. p. 88 & 89.

Hughes, J. Paul. 1991. *Proof Strikes of Canada, Volume XII, Full Circle Proof Strikes of the Maritimes'*. Published by Robert A. Lee Philatelist Ltd., Kelowna, BC. p. 73.

Hughes, J. Paul. 1992. *Proof Strikes of Canada, Volume XV, Registration Proof Strikes of the Maritimes'*. Published by Robert A. Lee Philatelist Ltd., Kelowna, BC. p. 91.

Lowe, Robson. 1973. *The Encyclopædia of British Empire Postage Stamps, Volume V: Part II, CANADA*. London, England: Robson Lowe Ltd.

MacDonald, J.J. 1985. *The Nova Scotia Post, Its Offices, Masters and Marks, 1700 1867*. The Unitrade Press, Toronto ON. p. 118, 125, 127, 129, 132, 137, 151, 152, 168, 274-275.

Munden, Carl. 1987. *Post Offices of Cape Breton, Volume 1 Inverness County*. Scotia Stamp Studio. Halifax NS. p. 120 and 121.

Munden, Carl. 1993. *Post Offices of Cape Breton Update*. Self Published. Dartmouth NS. p. 24.

Sagar, Michael. 1999. *The Money Order Office Number (MOON) Cancellations of New Brunswick, Nova Scotia, & Prince Edward Island (1950-1973)*. p. 91 and 96.

Combined Al MacInnis Commemorative and Canada Post Wings Markings
2000's

