

Official Free Markings Supplement 2

by Dennis Firth

The main listing was in three main parts:

- Bechuanaland Protectorate (Runner Post #63)
- Botswana markings which show the office of use and the words "Official Free" or similar on the same handstamp (Runner Post #64 -69)
- Official Free handstamps (usually straight line) which are used in association with departmental cachets. (Runner Post #70-71)

Supplement 1 was in Runner Post #72

This second supplement includes the latest finds.

Acknowledgment

Many thanks to Peter Jukes, and Bruce Warrender for these latest finds.

Corrections to Supplement 1

A few errors crept into Supplement 1 in RP#72, two of

which were illustrated in RP#73. Here are the rest.

119: Date should read 02-11-2004

134: Date should read 03-02-2006

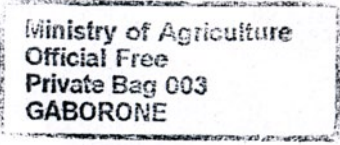
310: Date should read 08-10-2004 to 09-11-2004

440: Dimensions 55mm x 33mm

476: Date should read 25-07-2007

527: Date should read 22-04-2002 to 24-09-2007

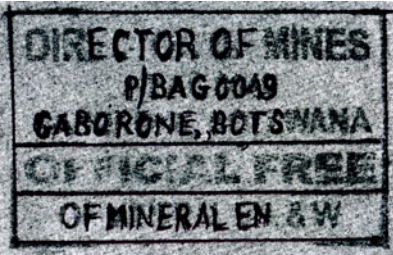
548: Should read REGIONAL EDUCATION OFFICE...

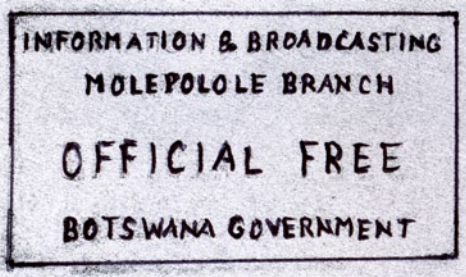
	
Ministry of Agriculture Private Bag 003 GABORONE	428
Gaborone Station 04-07-2001 to 12-06-2003	
Rectangle 45mm x 18mm	

Part 2 - Botswana

150 RP#66 Add "From Palapye 22-02-01"

190 RP#66 Amend Dates to "15-05-2002 to 30-07-2002"


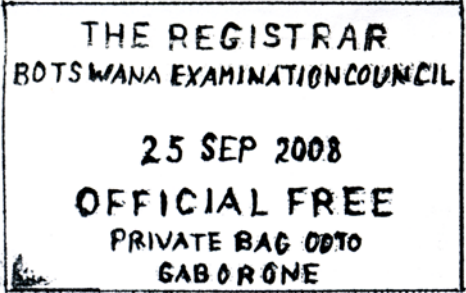
	
DIRECTOR OF MINES P/BAG 0049 GABORONE, BOTSWANA OF MINERAL EN & W	244
Gaborone 17-08-2008	
Rectangle 49mm x 31mm	

	
INFORMATION & BROADCASTING MOLEPOLOLE BRANCH BOTSWANA GOVERNMENT	388
Place not known 12-09-2008	
Rectangle 59mm x 33mm	

	
Ministry of Labour and Home Affairs REPUBLIC OF BOTSWANA	466
Gaborone 15-04-2008	
Rectangle 55mm x 19mm	

	
REGIONAL COOPERATIVE OFFICE PRIVATE BAG 23 MOLEPOLOLE, BOTSWANA [STRUCK IN BLUE]	547A
Molepolole 22-06-2007	
Rectangle 48mm x 17mm (approx)	

Part 4 - Other Official Free Markings Used in Association with Office Handstamps

	
TAPOLOGO C.J.S.S. BOTSWANA	568
Werda 25-09-2006	
Rectangle 73mm x 35mm (approx)	
	
THE REGISTRAR BOTSWANA EXAMINATION COUNCIL PRIVATE BAG 0070 GABORONE [STRUCK IN PURPLE]	592A
Gaborone 25-09-2008	
Rectangle 60mm x 39mm	

	
DEPARTMENT OF VETERINARY SERVICES P.O. BOX ? PALAPYE REGISTRY REPUBLIC OF BOTSWANA	721
Pota 09-12-2008	
Oval 58mm x 38mm	

- 572 RP#72 Amend Dates to "04-08-2004 to 12-09-2006"
- 613 RP #70 Add "ACCOUNTS, SIGNALS REGIMENT, GABORONE, BOTSWANA DEFENCE FORCE" **Struck in Red** 10-06-2003
- 633 RP#70 Add "BOTSWANA CUSTOMS AND EXCISE, SOUTH CENTRAL COLLECTION, REGISTRY, GABORONE" **Struck in Red** 09-10-2001
- 636 RP#70 Amend Dates to "15-03-2002 to 04-09-2002"
- 698 RP#71 P.O. Box No. should read 19. Amend Dates to "28-10-2004 to 09-11-2004"

Botswana Bar Coded Labels - Update

by Peter Jukes

Further to my previous article on the subject, in Runner Post 73 (and the follow up by Bruce Warrender and the Editor, in Runner Post 74), I have to apologize to those members who are avid collectors of these items and probably know far more than I do.

The article, as far as it went, was factually correct. What I was not aware of at the time of writing it was the fact that the very first labels used by the Botswana Postal Services were supplied only to the International Office of Exchange (better know to us all as the Gaborone Sorting Centre). These were issued on a trial basis, in (?) Nov 2002.

There were three types of labels issued,

- RR(for registered items)
- CP (for parcel registration)
- EE (for the Expedited Mail Service)

These were the fore runners to the white "in house" labels that the IT section of Botswana Post produced, in 2004.

Ed: We've had a number of articles in recent issues. For reference these are Runner Post #72 p.1773; Runner Post #73 p.1807-1809; Runner Post#74 p.1839-1840..

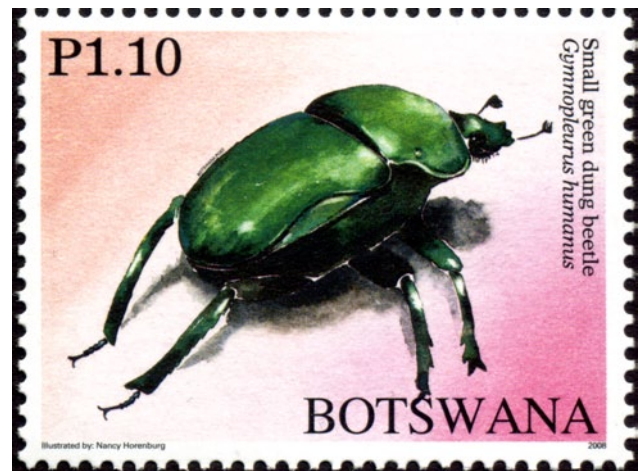
Digressing for a moment, the Canadian Postal Services use a label very similar in design to that of the current EMS label in use here in Botswana, for their Parcel Items. The bar code is incorporated in it but it use the letters CC as opposed to CP. I am reliably informed



UPU trial Parcel Label

The Runner Post

THE BECHUANALANDS AND BOTSWANA SOCIETY



Issue 75 Contents

LIST OF OFFICERS □ DIARY 1851 • EDITOR'S CORNER □ 19TH POSTAL BID SALE 1852 • HARBOR III □ Q&A 1853 • WORKING DIES FOR 4D VERMILION EMBOSSED ON 1889 REG. ENVELOPE 1854 • GEORGE V CONTROLS WITH INVERTED WATERMARKS 1858 • RARER STAMPS STUDY - PART 2 1859 • TWO EARLY COVERS FROM BAROTSELAND 1863 • OFFICIAL FREE MARKINGS - SUPPLEMENT 2 1868 • BOTSWANA BAR CODED LABELS - UPDATE 1869 • BOTSWANA POSTMARKS (SECOND SERIES) - PART 15 • 1871

ISSN No 0953-3354

July 2009