

The Runner Post



RUNNER POST No. 19 (ISSN No. 0953-3354)

SUMMER ISSUE - JUNE 1990

<u>Contents</u>	<u>Page</u>
Editors' Comments	331
Minutes of Ordinary Meeting at StampWorld 90	332
Shoshong - Early Illustration	333
Postage Due Covers / David Wessely	334
Bech./ Mashonaland Covers / A R Drysdall & D Collis	341
Airmail First Flights (I) / John Inglefield-Watson	347
Index to Volume IV	353
Auction 6 (U.K.)	Supplement

LIST OF OFFICERS

Chairman:	Mike George, 27 St. Peter's Road, St. Albans, Herts AL1 3SA, U.K.
Secretary:	Roy Setterfield, 18 Goldsmid Road, Hove, East Sussex BN3 1QA, U.K.
Treasurer:	Aubrey Glassborow, 156 Reading Road South, Church Crookham, Hants. GU13 0AH, U.K.
Auctioneer (UK):	Tony Chilton, 56 Framfield Road, Mitcham, Surrey CR4 2AL, U.K.
Botswana Representative:	R.J.F. 'Andy' Andersson P.O. Box 1240, Gaborone, Botswana.
South African Representative:	Howard Cook, P.O. Box 118, Gillitts, Natal 3603, South Africa.
Editors:	Alan MacGregor, P O Box 330, Croydon, CR9 2ZF, U.K. Roy Setterfield, 18 Goldsmid Road, Hove, East Sussex BN3 1QA, U.K.

Editors' Comments

Well, 'StampWorld London 90' has come and gone and what a show it was! Despite earlier misgivings about the actual location, this did not deter the many tens of thousands who journeyed to the 'Palace' in north London to find a very pleasant and well laid out venue with a good range of facilities and amenities, considerably better than London '80 as I remember it. It was a real pleasure to welcome so many members to the 'Southern Africa Hospitality Room' (which served its purpose admirably), particularly those who had come many thousands of miles. Our meeting on the Wednesday attracted no fewer than 30 people (mainly members - the few who weren't soon were!) a record I think, for a BBS meeting. The minutes of the meeting, which follow, record all those present.

We are not aware of any major Bechuanaland 'finds', but most people seemed to find something to make their trip that bit more worthwhile.

There were no specific Bechuanaland exhibits (lack of frame space prevented at least one being shown) but we are very pleased to report that Richard Knight's excellent 'Rhodesia - History and Development of Mail Services to 1924', was awarded a Large Vermeil. Southern Africa was not entirely absent however, and strong exhibits of Anglo-Boer War, SWA, New Republic and Nyasaland secured many of the top awards, including Gold and Large Gold, as did three superb Cape displays, one of which received the International Grand Prix.

This issue includes three fairly long articles (including an excerpt from the new 'Mashonaland' book), which has necessitated the usual 'departments' - Members' Comments and Queries, Items of Interest, etc. - being held over for the next issue, which will have a more 'newsy' content.

An index to Volume IV, Runner Post issues 13-16, is also included which therefore closes that Volume. A cumulative index with the next Runner Post will bring us right up to date.

With this issue is our latest auction list. With over 100 lots there should be something for everyone. Closing date is 23rd August. Good luck!

Minutes of the Ordinary Meeting of the Society
Held During StampWorld London 90 at Alexandra Palace, London
on Wednesday 9th May 1990 at 2.00pm

Members present:

Andy Andersson, Philip Cattell, Jim Catterall, Tony Chilton, Alan Drysdall, Brian Fenemore, Dennis Firth, Mike George, Aubrey Glassborow, David Hardwick, Bill Hart, John Inglefield-Watson, Philip Kaye, Frederick Lawrence, Alan MacGregor, Dave Mathews, Gary Morris (new member), Roy Setterfield, Brian Trotter and David Wall.
Visitors: Harry Birkhead, Gren Eaton.

Apology for absence:

Birgit Sten-Jensen, due to the death of her husband. It was agreed that a letter of condolence be sent.

Chairman:

Mike George was in the Chair, and in his opening remarks he said he was very gratified that the Society continues to attract new members. The minutes of the previous meeting were taken as read, and signed as a true record.

Secretary's Report:

Roy said that the membership of the Society was about 90. He reported that Hamish Campbell was still very ill, as he had had a serious relapse. He reminded us of the tremendous amount of work that Hamish had done in inaugurating the Society in South Africa. The Committee had expressed a desire to hold Saturday meetings in the future, but a room at the Horticultural Hall would not be available, so it was suggested that an alternative venue be sought. Roy said he wished to resign as Hon. Secretary.

Treasurers Report:

Aubrey reported that the financial position was very good at the present time, due to receiving the surplus from South Africa which amounted to £159.85. He expressed thanks to Roy Setterfield and Alan MacGregor for manning the room at the exhibition. An account at a building society had been opened which yielded about 10% interest. There were 8 unpaid members throughout the world, and 6 people had paid their subscriptions in advance. There was £420.00 in the building society account, and about £70.00 in the bank.

Runner Post:

Mike George expressed thanks to John Inglefield-Watson for the many interesting articles he had contributed to the journal, but John said he was now running out of contributions, and an appeal was made to other members for articles to be published in the Runner Post. Concern was expressed that in the event of these not being forthcoming, it may be difficult to sustain four issues each year, and it may be necessary to reduce the number of issues to two per year, alternating with smaller newsletters. It was suggested that articles be kept fairly short so as to cater for as many different interests as possible. It was reported that the cost of Runner Post was £1 per issue per member plus postage.

Other Business:

Dave Mathews suggested supplying a list of members to each member of the Society, but unless members object it is intended to publish a list in a future issue of Runner Post.

An appeal was made for items for the next Society auction. Material should be sent to Tony Chilton as soon as possible.

Next Meeting:

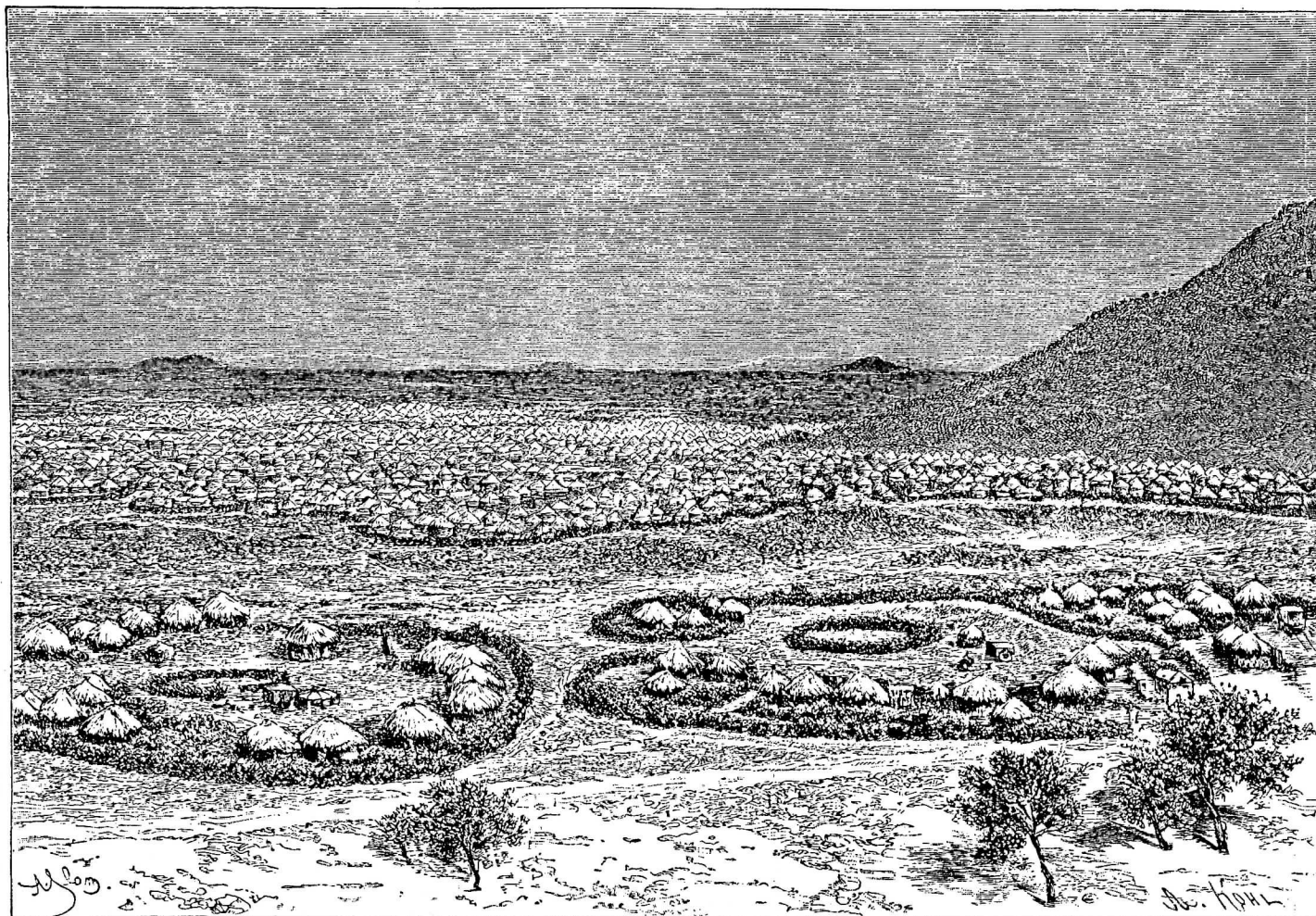
This will be a General Meeting to be held during Stampex/B.P.E. on Wednesday October 17th 1990. A new Chairman, and Secretary will be required.

News From Botswana:

Andy Andersson gave an explanation to members of several queries that had been raised in recent issues of Runner Post. These will be published in a future issue. He also gave details of recent emissions from the Botswana Post Office. These included 1987 and 1988 yearbooks of commemorative stamps, folders issued in connection with conferences held in Grenada and Washington, Booklets, Aero-grammes, 3 recent surcharged stamps, 3 printings of registered envelopes and some modern postmarks which would be sold in aid of Society funds. Andy said he had recently been appointed Curator of the Botswana Postal Museum, and told an amusing story of the builders installing a sprinkler system in the Museum (including the safe). On his insistence this had been removed.

Display:

Four members contributed to the display, these being Mike George - early Bechuanaland stamps, John Inglefield-Watson - large registered envelopes, Roy Setterfield - Botswana and Bophuthatswana postmarks and Alan MacGregor - early documents and Stellaland Revenue stamps.



SHOSHONG, CAPITAL OF THE BA-MANGWATOS.

(From an engraved, coloured print in Roy Setterfield's collection)

POSTAGE DUE COVERS

David Wessely has kindly sent us photocopies and details of his strong holding of Postage Due covers in and out of Bechuanaland Protectorate. We are sure members will appreciate David's gesture. [Note: Postage dues are generally added to the value of double the deficiency of the postage - Ed]

OUTGOING: COVERS FROM BECHUANALAND BEARING THE POSTAGE DUES AND/OR MARKINGS OF ANOTHER TERRITORY

1. 1902, stampless cover to USA sent from PALAPYE (June 23) and with PALAPYE STATION (June 24) cds on reverse. Tax markings include manuscript 'T8d', 'T,25c.' in octagon and twin circle 'NEW YORK+DUE/10/CENTS' dated 26 July. Vicksburg Miss. arrival (28 July) on reverse.

My only guess is that somehow this cover had something to do with the Boer War (which had ended a month earlier) but the postal services in Africa and the USA saw no reason why it should pass free of postage and taxed it accordingly. Which markings were applied where is not known to me.

2. Registered BP 4½d stationery envelope (H&G 16) with additional ½d (SG 91) cancelled on June 11, 1929 at Pitsani, BP. It arrived in Mafeking where two South African 1d postage dues were affixed and cancelled June 17, 1929.
3. Cover bearing 2/6 Seahorse (SG 88) cancelled at Mafeking on Nov 28, 192(8?) to the UK. A line drawn around the stamp indicates that it was disallowed. A pair of GB 2d postage dues were added and cancelled at Tadworth, Surrey. Tax markings include: 'T/4d' in circle; 'T/40' in octagon; large numeral '4d/I.S/D.' and handwritten endorsement "Stamp not admissible for payment of postage in the Union of SA. PM(?)"
4. Cover to the USA franked GV 2d (SG 93) cancelled at Mahalapye (April 9, 1925), taxed with 8 x US ½c dues (Scott J68) cancelled at East Kensington PA. Tax markings include octagonal 'T/20c' and 'New York N.Y./G.P.O., DUE 4 CENTS' duplex (May 15, 1925).
5. Printed cover to USA franked GV 2d (SG 93) cancelled Lobatsi (5 Jan 1932). Octagonal 'T/20c' and 'NEW YORK, DUE/4/CENTS' tax markings. No postage due stamps have been affixed.

INCOMING: COVERS BEARING BECHUANALAND POSTAGE DUE/S

6. Air mail cover from Bermuda to Pitsani franked GVI 7½d (SG 114b) (standard inter-Commonwealth rate for ½ ounce) cancelled in Bermuda (date unclear). Manuscript 'T' and large '3½'. ½d, 1d and 2d BP Postage Dues (SG D1-3) affixed and cancelled Pitsani (apparently 13 Nov, 195?).

Note: The above cover appears philatelic due to the neatness and late usage of the BP Dues. However it is the only example I know of with these stamps (How did the authorities arrive at a charge of 3½d?). I would be very grateful to hear from any member who knows of any other examples.

7. Cover franked KGV 1d + 1½d, from Margate, UK (12 March 1938) addressed to Francistown where a 1d Due (SG D5) was affixed and cancelled on 26th March. Hexagonal tax mark with manuscript '10' inside. Large boxed 3 line cachet on reverse reads 'PLEASE ADVISE SENDER THAT / LETTERS SHOULD BE PREPAID / 1½d FOR EACH HALF OUNCE'. Additional Francistown arrival cds on reverse.

The following two covers (8-9), are both addressed to L.I. Schreiber, Elizabeth, New Jersey and have been re-addressed and forwarded to 'General Delivery/[town]/ Bechuanaland Protec/South Africa'. (Was there a charge for 'General Delivery'?)

8. From Romania, franked 59 Lei in postage cancelled in Bucharest (Gara De Nord) on July 16, 1951. Re-addressed to Gaberones Village where ½d + 1d Dues (SG D4-5) were affixed and cancelled on 28 Sep. 1951. A manuscript 'T1½d' at top left is the only tax marking.
9. From Bolivia, franked 5 BS cancelled at Cochabamba, Bolivia on 21 Feb, 1951. Re-addressed to Ramoutsa where 1d + 2d Dues (SG D5-6) were affixed and cancelled with a RAMOUTSA/STA cds on 6 March, 1951. A manuscript 'T3d' at right is the only tax marking.

A second pair of covers (10-11) addressed to R.W. Richardson of New York, both re-addressed and forwarded to 'c/o General Delivery/Serowe/Bechuanaland Prot/S.Africa' and subsequently 'Serowe' crossed out and 'Francistown' written in.

10. From Canton Island (Phoenix Group, Pacific Ocean) 30th Jan, 1956, franked US 8c (Scott 1066), New York transit backstamp (Feb 18). 2 line h/stamp cachet 'Insufficiently Prepaid/For Air Mail Service', and manuscript tax mark 'T4'. B.P. ½d x 2, 1d & 2d Dues (SG D4-6) cancelled at FRANCISTOWN 19 June, 1956.

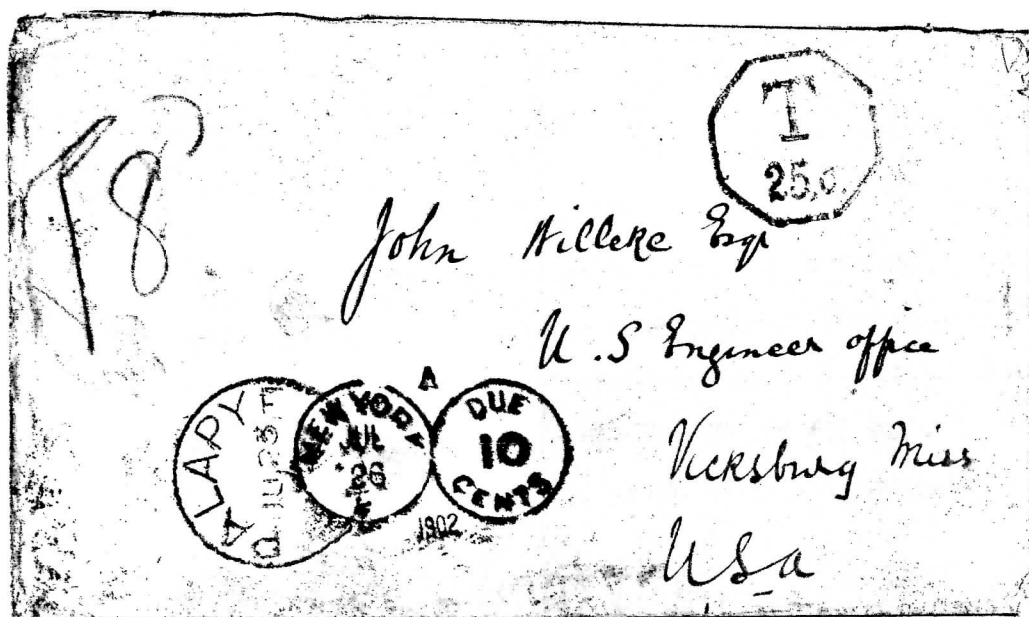
Note: There was an almost identical cover (same stamps, dates etc) to No.10 in the David Feldman sale of May, 1988. [Now in Brian Fenimore's collection. - Ed]

11. From Canada, franked 10c (SG 479-80) cancelled Prince George 27 Feb, 1956. 11c additional postage added in New York and cancelled 1 March. Handstamped 'NOT IN AIR MAIL' cachet, backstamped Serowe (7 April) and manuscript 'T4d'. B.P. ½d x 2, 1d & 2d Dues (SG D4-6) cancelled FRANCISTOWN 27 June, 1956.

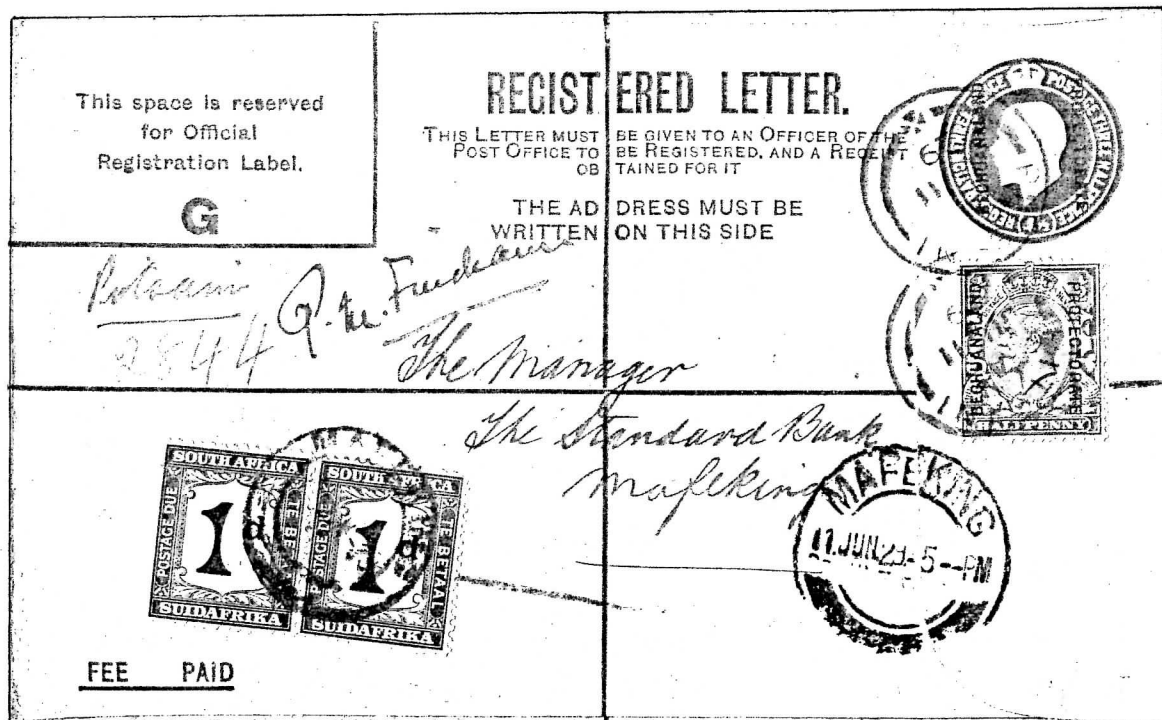
It is quite probable that both pairs of these covers (8-9, 10-11) may have been philatelically contrived - have members seen other covers to these addressees? However, the origins and destinations are unusual and the stamps are legitimately tied to the covers. I am currently attempting to find out the postage due rates in effect in Bechuanaland during this period.

Postage Due covers coming in or going out of Bechuanaland are quite scarce. Perhaps these will spark some interest. I would be very keen to purchase and make additions to my small group.

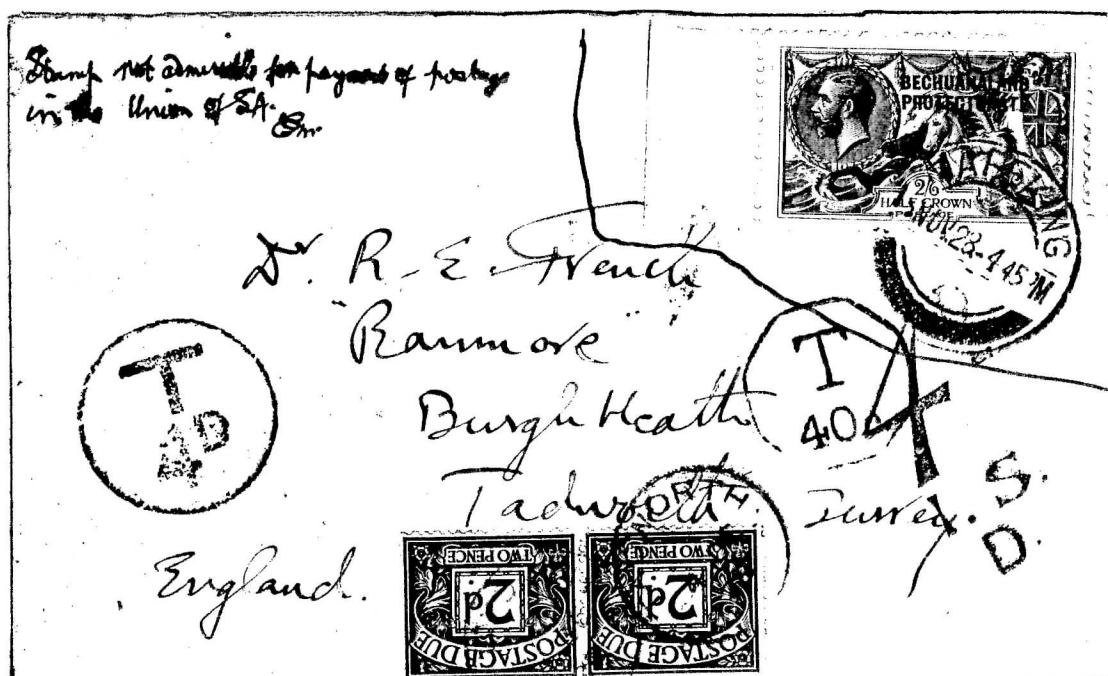
David Wessely



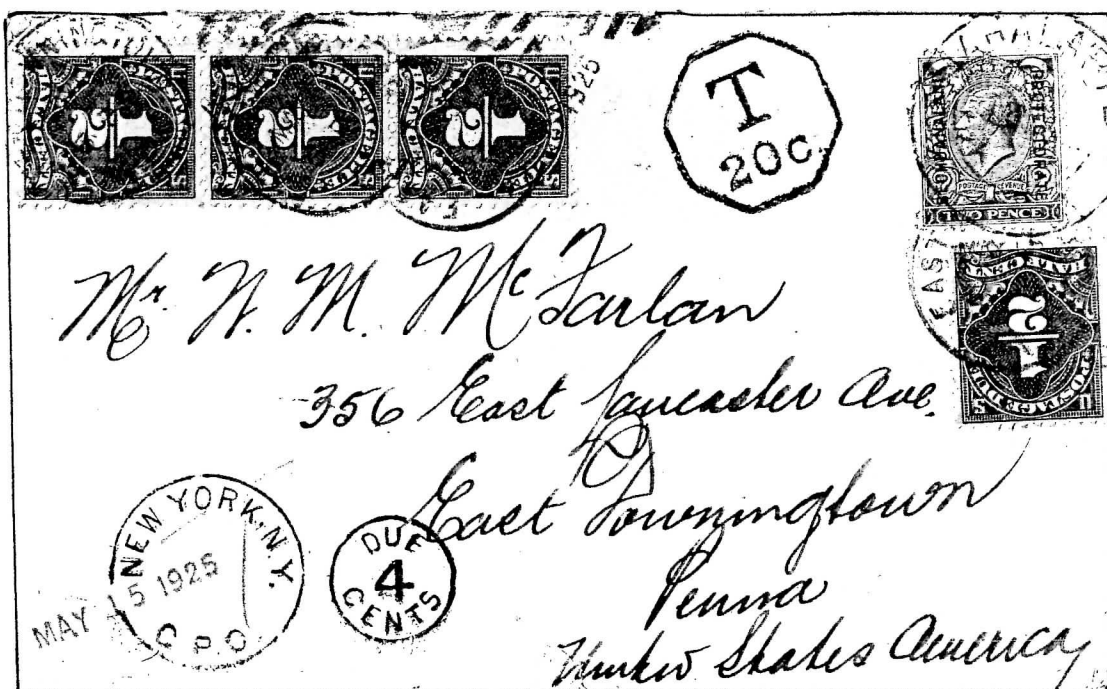
Cover 1



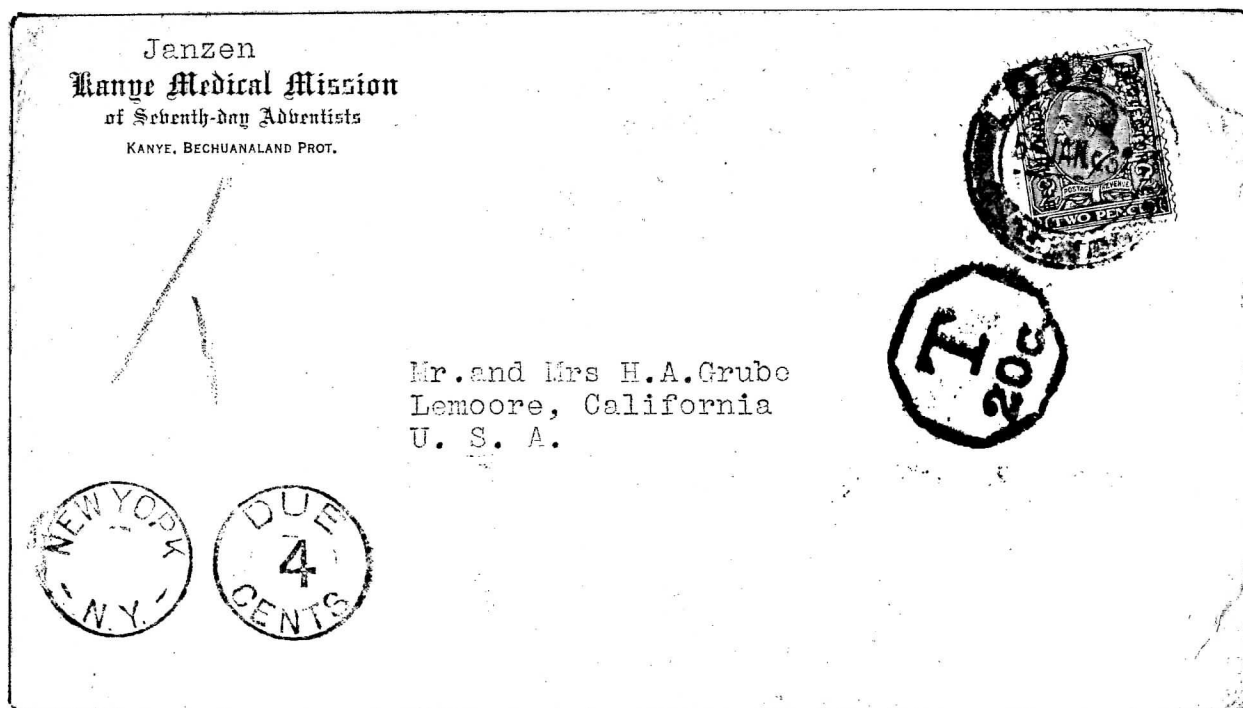
Cover 2



Cover 3



Cover 4



Cover 5

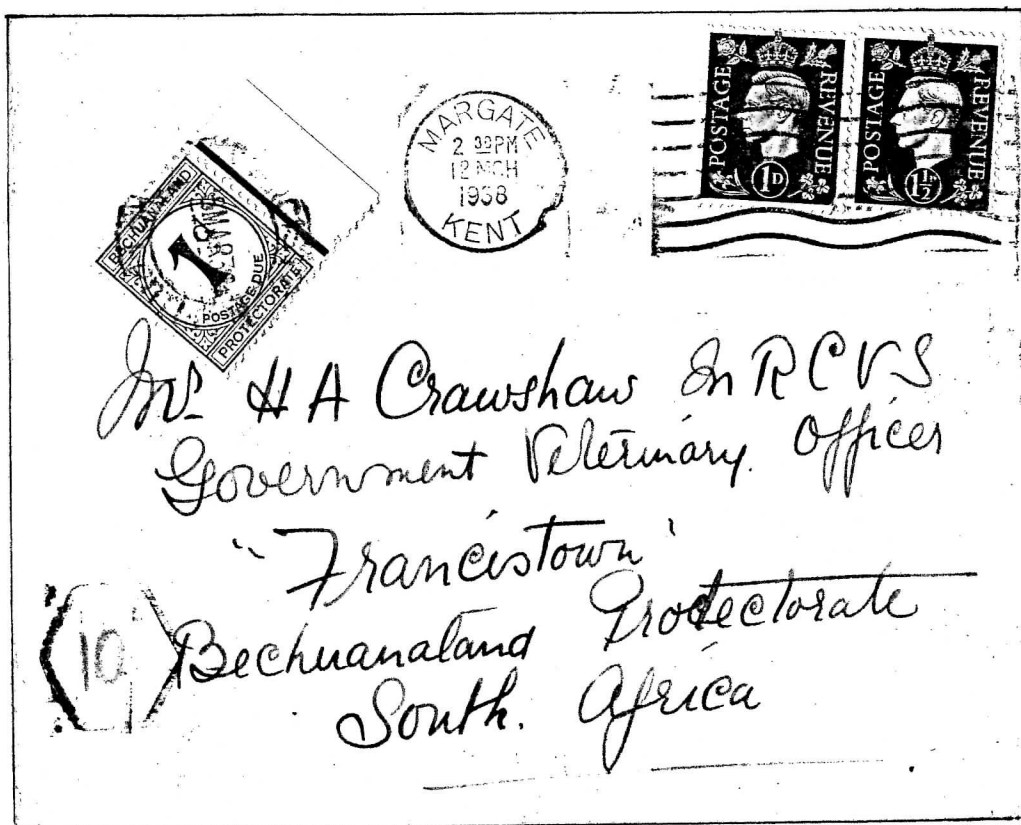


3 1/2

Mr. J. Ruyter
General Delivery
Pitsani,
Bechuanaland Protectorate.
South Africa.



Cover 6



PLEASE ADVISE SENDER THAT
LETTERS SHOULD BE PREPAID
1½d FOR EACH HALF OUNCE

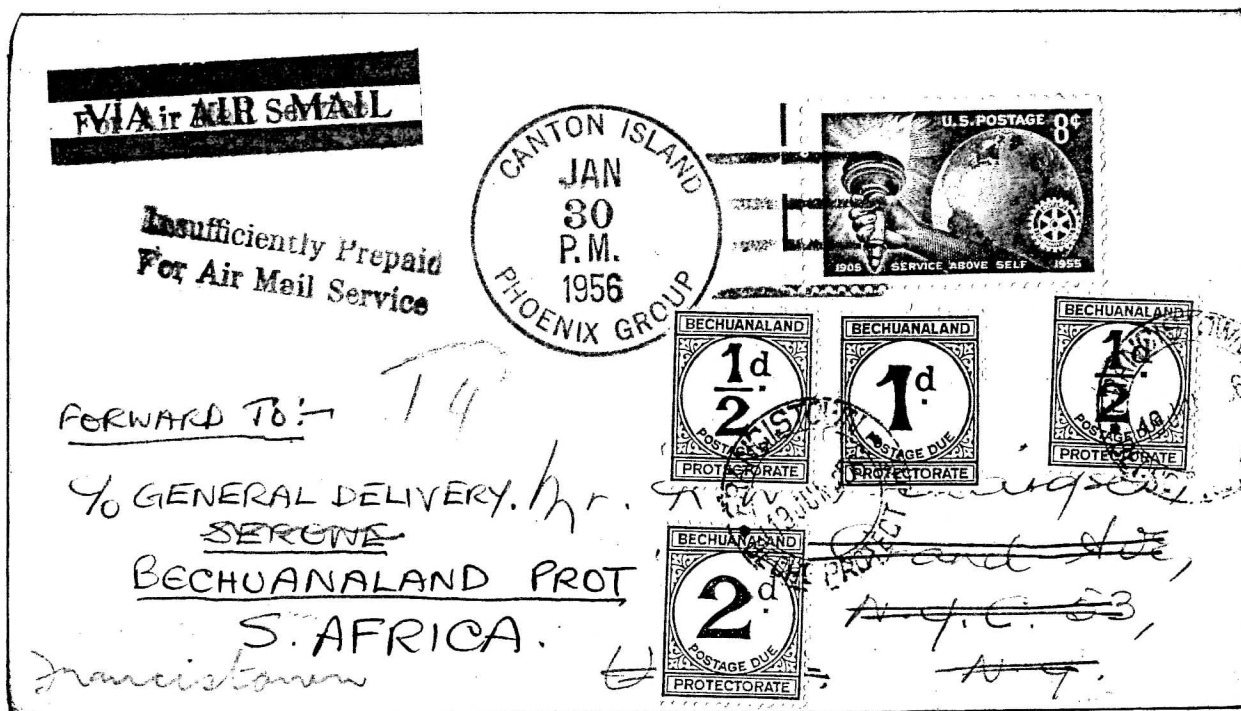
Cover 7, with cachet on reverse



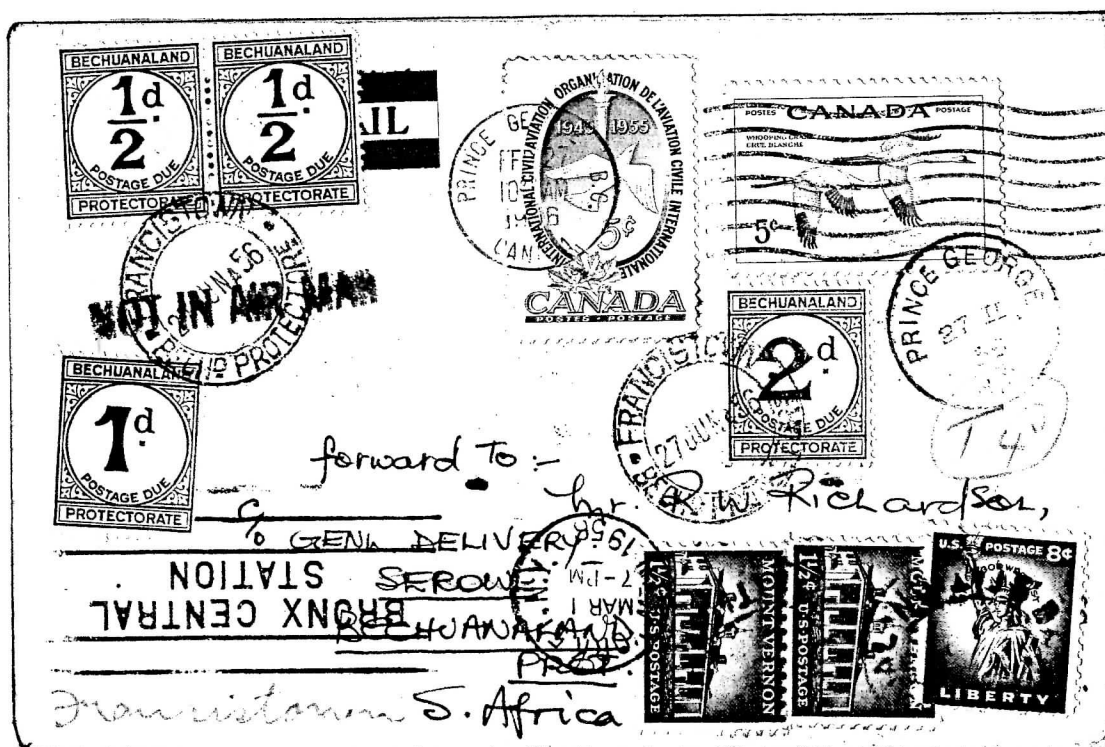
Cover 8



Cover 9



Cover 10



Cover 11

MASHONALAND COVERS FRANKED WITH COMBINATIONS OF BECHUANALAND AND BSA Co. STAMPS

Alan R Drysdall and Dave Collis

The stamps issued by the British South Africa Company (BSA Co.) were not recognised as receipting payment of postage on mail addressed to or via the other territories of central and southern Africa until the 1st August, 1892. Mashonaland mail was therefore franked in the first instance with Bechuanaland Protectorate or British Bechuanaland stamps, and later with combinations of BSA Co. and Mozambique or Bechuanaland stamps depending on the route. A recent study of the postal history of Mashonaland by the authors (1) includes new information regarding these rare combination covers.

Revised rates for mail sent via Bechuanaland Protectorate and internal rates applicable to the whole of Mashonaland were introduced by the BSA Co. on the 14th May, 1892. They were listed in a Postal Notice (2) as follows:

"Notice is hereby given that on and after the 14th instant the following rates of postage will be charged in addition to the Colonial rates, viz :-

Letters	For every half ounce or fraction thereof	£0.0.4d.
Newspapers	For every four ounces or fraction thereof	£0.0.2d.
Book packets and Parcels	For every ounce or fraction thereof	£0.0.1d.
Registration fee		£0.0.8d."

"N.B. The above rates will include the Protectorate fines of 2d per letter, 1d per newspaper and 3d per book-packet or parcel which hitherto have been borne by the Company.

Letters posted within the Company's territory must bear the Company's postage stamps in accordance with the above rates, and each Postmaster will collect on delivery the above rates on letters, etc., not so prepaid.

Salisbury
May 3rd, 1892.

(Signed) L. S. Jameson,
for B. S. A. Co."

This notice was distributed to postmasters with a circular letter which included the following more detailed instructions:

- "2. The Company's stamps will cover the Protectorate rates on outgoing letters both ordinary and registered, and each Postmaster will, until his supply of Bechuanaland stamps is exhausted, affix to the letter or parcel free of charge the Bechuanaland stamps necessary for passage through the Protectorate. When the Bechuanaland stamps have been used, Company's stamps to cover Mashonaland, Protectorate, and Colonial and Foreign rates are to be fixed by the Public, the Tuli Postmaster affixing the necessary Bechuanaland or Transvaal stamps free of charge. Upon insufficiently prepaid letters the Tuli Postmaster will insufficiently prepay in Bechuanaland stamps.
- "3 The Postmaster at Umtali will in a similar manner affix the necessary Portuguese stamps to letters bearing the Company's stamps and addressed via Beira."

The use of the phrase "When the Bechuanaland stamps have been used", which is interpreted to mean when an individual postmaster's stock of Bechuanaland was exhausted, suggests that no Bechuanaland stamps were distributed after the notice was issued; they would be held only by the Postmaster at Tuli.

The wording of the notice can be read as instructing postmasters to affix BSA Co. stamps to receipt the total amount paid by the sender, which in the case of a half-ounce letter would be 4d plus the British Bechuanaland (Colonial) rate, and, if he had them, the appropriate Bechuanaland stamps to indicate that the Protectorate rate had been paid. However, the few surviving covers show that it was common practice to use BSA Co. stamps to receipt only the 4d internal rate, except when locally held stocks of Bechuanaland stamps had been exhausted (see Table 1).

It is hardly surprising in view of the complexities that mistakes occurred, but it is surprising that the culprit was on occasions the Salisbury Office.

The regulations which gave rise to covers franked with combinations of British Bechuanaland and BSA Co. stamps were in force for only two and a half months (14th May to 31st July, 1892), and examples are therefore rare. Six, one of which has a stamp missing, are known to the authors. Two are described by Knight (3); these and one other are also described by Wright (4).

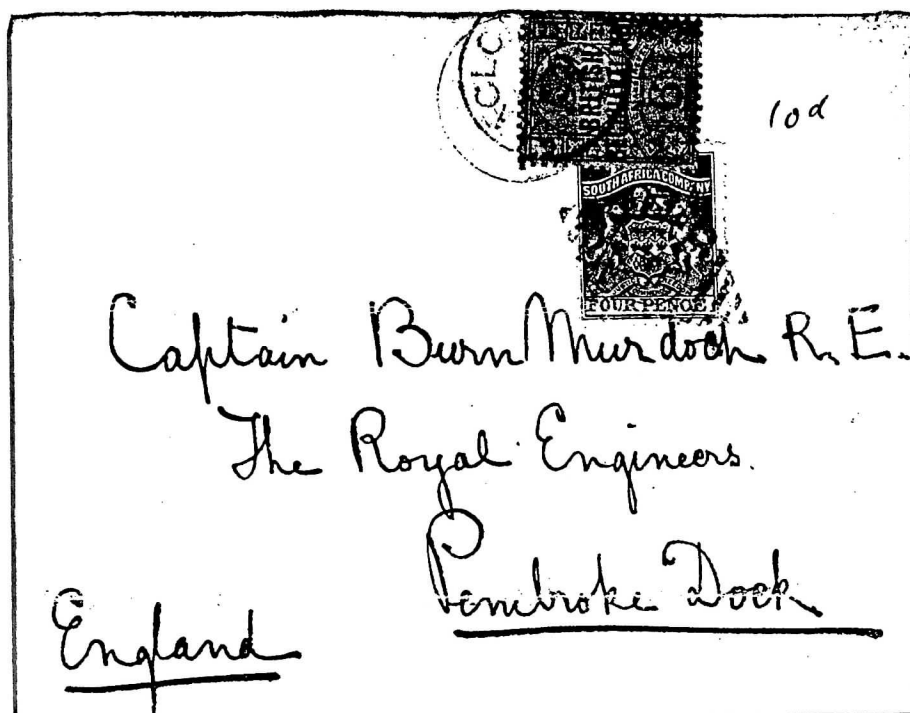


Fig. 1

backstamps

The cover illustrated as figure 1 is a recent discovery. The annotation at top-right indicates that the sender paid 10d, the Company internal rate (4d) plus the Bechuanaland rate to UK (6d) for mail originating from Mashonaland. The franking comprises a 4d BSA Co. stamp (SG 22), which was cancelled with the 'F' barred-diamond obliterator, and a 6d British Bechuanaland stamp (SG 36), which overlaps both the Company stamp and the strike of the single-circle Victoria datestamp. This would suggest that the Bechuanaland stamp was affixed at Tuli, but reference to table 1 shows that both the stamps were probably affixed at Victoria. The date in the Victoria mark is unreadable, but the Macloutsie datestamp cancelling the Bechuanaland stamp was struck on 'JU 27 / 92'. The letter passed through Vryburg on 'JY 4 / 92' and was received in Pembroke Dock on 'JY 25 / 92'.

Another cover from the same correspondence is also annotated '10d', in this case underneath the stamp, and was presumably originally franked with a 4d BSA Co. stamp in addition to the surviving Bechuanaland 6d duty (SG 14). The single-circle datestamp struck at top-left records that it was posted at Victoria on 'JU 3 / 92'. The backstamps, which include a strike of the mutilated 'H sideways' ('T') letter-coded datestamp used at Tuli, record the route as: Tuli ('JU 10 / 92'), Macloutsie ('JU 13(?) / 92'), Vryburg ('JU 20 / 92') and Pembroke Dock ('JY 11 / 92').

The Williams collection included a combination cover addressed to Kimberley which was posted the following month (5). It was also sent from Victoria, where single 2d and 4d BSA Co. stamps (SG 20 and 22) were affixed and cancelled with the 'F' barred-diamond obliterator (figure 2). The single-circle 'VICTORIA' datestamp - 'JY 8 / 92' - was struck alongside. This franking is evidence that the Victoria Office did not have the necessary Bechuanaland stamps (see table 1), and was made up of the internal rate (4d), which included the Protectorate charge, plus the British Bechuanaland ('Colonial') half-ounce letter rate to the Cape (2d). In this case the 4d Bechuanaland stamp (SG 13) partly covering the strike of the Victoria datestamp must have been affixed at Tuli. It was cancelled at 'MACLOUTSI' on 'JY 18 / 92'.



Fig. 2

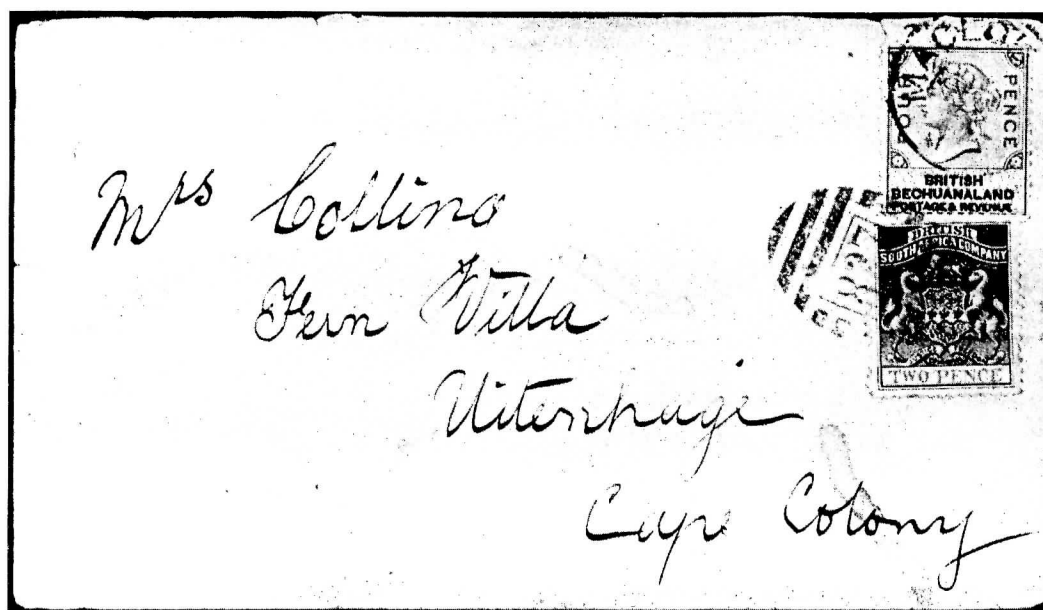


Fig. 3

The incorrectly franked cover, formerly in the Simpson collection (6), illustrated as figure 3 is addressed to Uitenhage, Cape Colony, and bears a BSA Co. 2d (SG 20) and British Bechuanaland 4d (SG 13) stamps, the former cancelled with the '827' bared-oval obliterator of the Salisbury office and the latter with the 'MACLOUTSI' datestamp. The BSA Co. stamp and the strike of the '827' obliterator overlap onto the Bechuanaland stamp, which must therefore have been affixed at Salisbury. The sender presumably paid 6d, which was the correct rate. The routing was Salisbury ('19 JY / 92'), Tuli ('AU 9 / 92'), Macloutsie (unreadable date), Vryburg ('AU 15 / 92') and Uitenhage ('AU 17 / 92').

These three covers originating from Victoria show that the stock of 6d Bechuanaland stamps held by that post office in early June 1892 included both SG 14 and 36. This supply was apparently exhausted sometime between mid-June and the end of the first week in July 1892.

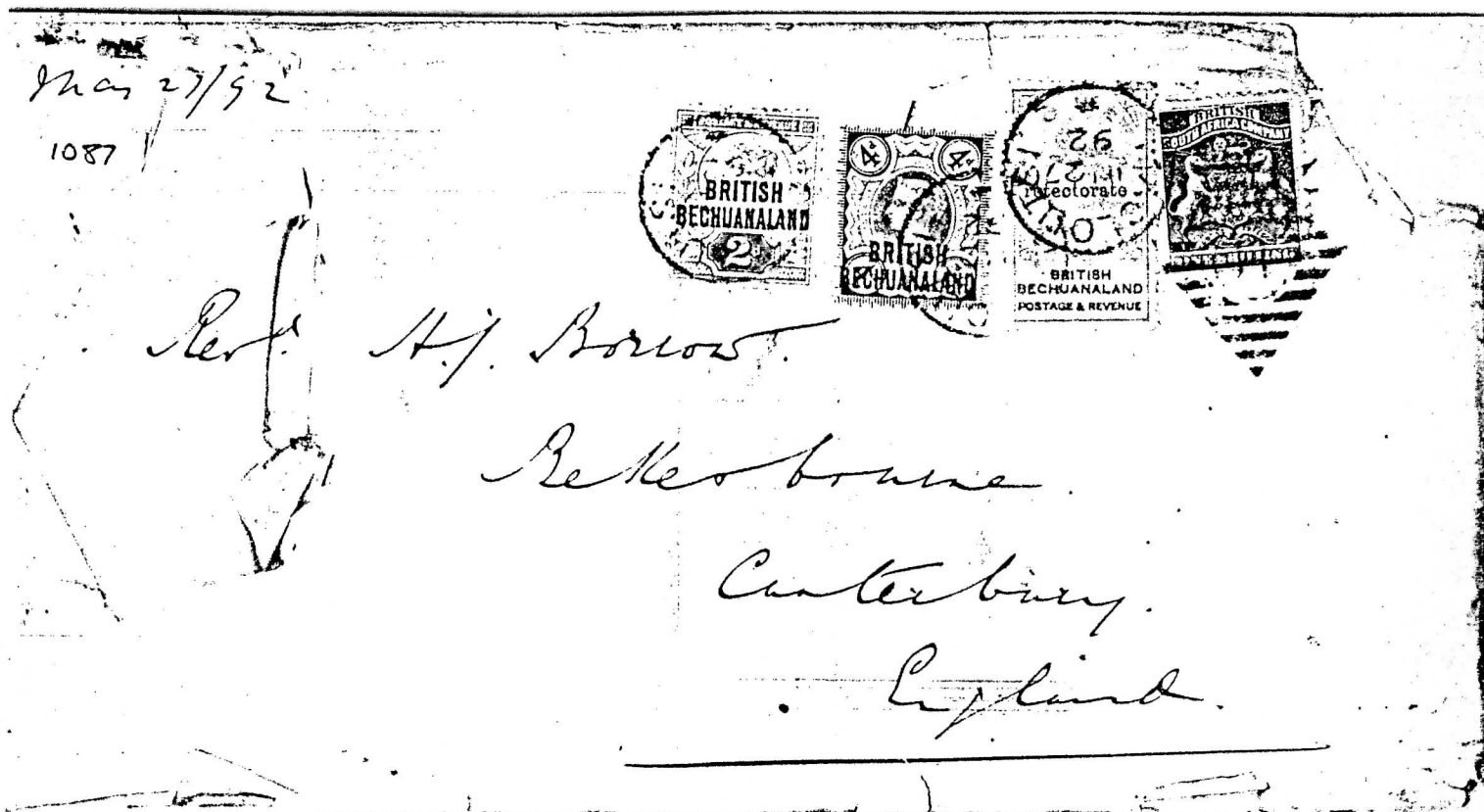


Fig. 4

A combination cover addressed to the UK on permanent display in the National Archives, Harare (7), contained a letter written at Salisbury on the 27th May, 1892. The franking is a 1s BSA Co. stamp (SG 4), which was cancelled with the 'H' barred-diamond obliterator at Tuli, and 1s 6d in Bechuanaland stamps (SG 34, 35 and 46), which were cancelled at Macloutsie on 'JU 27 / 92' (fig. 4). (The backstamps do not include a Mashonaland datestamp to indicate the date of posting.) The BSA Co. stamp overlaps slightly onto the Bechuanaland 1s duty, and all the stamps were therefore affixed at the office where the letter was posted, presumably Salisbury. The franking is correct for a triple-rate letter.

The only recorded registered combination cover (fig. 5) was first illustrated by Dann (8). It was subsequently illustrated by Robson Lowe (9), but its present whereabouts is unknown. It is addressed to Port Elizabeth and franked with British Bechuanaland stamps (4 x SG 11 and SG 35) to a total value of 1s, and BSA Co. stamps to a total value of 1s 4d (4 x SG 1 and SG 4). The Company's stamps marginally overlap onto, and were evidently applied after, the British Bechuanaland 2d stamps, which must therefore have been affixed at the office at which the letter was registered. A pencilled annotation indicates that the Company's stamps were cancelled with the 'H' barred-diamond obliterator at Tuli, but the letter is more likely to have originated from Salisbury. (A similar annotation alongside the 1s stamp reads "K wmk", possibly the last letter of 'PURE LINEN WOVE BANK', the sheet watermark of William Collins, Sons and Co.) The British Bechuanaland stamps were cancelled with the 'MACLOUTSI' single-circle datestamp, and the cover backstamped at Macloutsie ('JU 27 / 92'), Vryburg (JY 4 / 92) and Port Elizabeth ('JY 7 92').



Fig. 5

The sender should have paid 1s 2d, and the franking (see table 1) should have been 1s in Company stamps - local postage (4d), including the Protectorate charge (2d), plus British Bechuanaland postage to the Cape (2d) and the registration fee (8d) - and 1s in Bechuanaland stamps (the Protectorate half-ounce rate to the Cape plus the registration fee).

TABLE 1 FRANKING OF HALF-OUNCE LETTERS DESPATCHED VIA TULI,
14th MAY - 31st JULY, 1892

DESTINATION	PAID BY SENDER	FRANKING			
		Bechuanaland stamps affixed by the office of despatch		Bechuanaland stamps not affixed by the office of despatch*	
		BSA Co. stamps	Bechuanaland stamps	BSA Co. stamps	Bechuanaland stamps*
Cape and Transvaal	6d	4d	4d	6d	4d
UK	10d	4d	6d	10d	6d
Registration	8d	8d	8d	8d	8d

* the appropriate Bechuanaland stamps were affixed at Tuli

References

- 1 Drysdall, A.R., and Collis, D., 1990, Mashonaland; a postal history 1890-96: Christie's/Robson Lowe, the Rhodesian Study Circle and A.R. Drysdall, London
- 2 National Archives of Zimbabwe LO 5/2/20
Ellenberger, V.F., 1967, Rhodesia; genesis of the British South Africa Company's stamps and postal services: Supplement to 'the South African Philatelist', v. 43, no. 6 (para. 12b)
- 3 Knight, R.C., 1983, Early Southern Rhodesian postal rates - some interesting covers: 'Journal of the Rhodesian Study Circle', no. 124. v. 35, p.106-8
- 4 Wright, E.K., 1986, Bechuanaland stamps used on Rhodesian mail: 'Journal of the Rhodesian Study Circle', no. 133, v. 36, p.35-44 & no. 134, v. 36, p.80-84
- 5 Christie's/Robson Lowe, Basle, 25.10.77, lot 504
- 6 Sotheby's, London, 2.12.82, lot 460
Knight, R.C., and Mitchell, D., 1984, The postmarks, postal routes and principal postage rates of Southern Rhodesia to 1924: published by R.C. Knight, P.O. Box 13343, Mowbray, Cape 7705 (fig. 11)
- 7 National Archives of Zimbabwe BO 11/1/1/1087
- 8 Dann, H.C., 1981, The Romance of the posts of Rhodesia, British Central Africa and Nyasaland (combined edition): Books of Zimbabwe, Bulawayo (p.261)
- 9 Robson Lowe, 1949, The encyclopaedia of British Empire postage stamps, 1806 - 1948, Volume II The Empire in Africa: Robson Lowe Ltd, London (p.138)

Figure captions

- 1 The annotation at top-right indicates that the sender of this cover paid 10d. The BSA Co. 4d stamp was affixed and cancelled with the 'F' barred-diamond obliterator, and the 22mm datestamp was struck at Victoria. The 6d British Bechuanaland stamp was also affixed at Victoria, but was cancelled at Macloutsie in Bechuanaland Protectorate. The backstamps are Macloutsie (27.6.92), Vryburg (4.7.92) and Pembroke Dock (25.7.92) (Courtesy of Kevin Ashworth)
- 2 A cover posted at Victoria on 'JY 8 / 92', where the 2d and 4d BSA Co. stamps were cancelled with the 'F' barred-diamond obliterator. The 4d British Bechuanaland stamp was probably added at Tuli and was cancelled at Macloutsie on 'JY 18 / 92' (Robson Lowe, Basle, 25.10.77, lot 504)
- 3 An incorrectly franked combination cover. The 2d BSA Co. stamp was cancelled at Salisbury with the '827' barred-oval obliterator, and the British Bechuanaland 4d stamp at Macloutsie. The routing was: Salisbury (19.7.92), Tuli (9.8.92), Macloutsie (unreadable date), Vryburg (15.8.92) and Uitenhage (17.8.92) (Courtesy of R.C. Knight)
- 4 A triple-rate cover franked with a BSA Co. 1s stamp in combination with British Bechuanaland 2d and 4d and Bechuanaland Protectorate 1s duties. The enclosed letter was written at Salisbury on the 27th May, 1892. The BSA Co. stamp was cancelled with the 'H' barred-diamond obliterator at Tuli, and the Bechuanaland stamps at Macloutsie on 'JU 27 / 92' (National Archives of Zimbabwe BO 11/1/1/1087)
- 5 The franking in Bechuanaland stamps on this cover corresponds to the 4d Protectorate half-ounce letter rate to Cape Colony and 8d registration fee. The franking in BSA Co. stamps suggests that the sender paid an additional 4d for the Company's internal rate. (Dann, 1981, p.261)

[And a note on Macloutsie...

In the above article, MACLOUTSIE refers to the village or office, and MACLOUTSI to the date-stamp. For those not yet familiar with the spellings of Macloutsie / Macloutsie, both spellings were used on datestamps issued to Macloutsie office: the earlier date-stamp showing MACLOUTSI was used until about 1893; MACLOUTSIE was introduced probably in 1892, so there was some overlap. Macloutsie was on (near) the Macloutsie River, and nothing to do with a Scotsman; a modern spelling is MOTLOUTSE River ('where elephants dig holes with their trunks'). - Ed]

AIRMAIL FIRST FLIGHTS - PART 1

by

John Inglefield-Watson

INTRODUCTION

Although the Warren Expedition of 1885 saw one of the earliest uses of balloons in active operations by the British Army, we have to wait almost 50 years or more for the introduction of air mail services in Bechuanaland. In the early 1930's such mail went overland to connect with one of the newly established air routes, either in South Africa or Southern Rhodesia. The first internal airmail service began on 1 November 1938 and provided all-the-way air connections to the main routes North to Cairo and London and South to Cape Town.

Examples of mail carried on the first flights of these services are almost always philatelic but should not be spurned for this reason. Without such covers detailed information about the early air mails would be much harder to find.

I suspect that there must be other members whose knowledge of the development of air mail services in Southern Africa is far greater than mine but, having waited patiently and in vain for five years for some enlightenment to appear in 'The Runner Post', I feel that the time has come to put my limited information to the test in the hope that it will bring forth additions and, perhaps, corrections.

Before getting down to detail I offer one cautionary comment. The accumulation of mail acceptances prior to a flight and the occurrence of overnight stops en route sometimes result in the dates shown on cancellations being earlier than the actual flight departure dates.

OVERLAND TO NEAREST AIRMAIL ROUTE

I begin this section with a cover that I am unable to explain and I follow with two Southbound flights that could but may not have carried Bechuanaland mails.

1. Dec 1931. '1st Experimental Service'

The cover illustrated (fig.1) is a mystery to me. It originated at Francistown on 15 Dec 1931, in good time to connect with the Southbound Imperial Airways Christmas Flight at Bulawayo (see below). However, the arrival backstamp at Beaufort West is dated 18 Dec. at least two days before the Christmas Flight reached there. Was it carried on some other 'experimental' flight or did it travel all the way overland in spite of the air mail endorsement?

2. Dec 1931. Imperial Airways Christmas Flight to South Africa

In advance of the opening in Jan 1932 of a regular London - Cape Town service, a special flight over the route (fig.2) was arranged to enable Christmas mail for the Rhodesias and Southern Africa to be carried by air. The flight left London on 9 Dec and reached Salisbury on 19 Dec, Johannesburg on 20 Dec and Cape Town on 21 Dec. I have seen no evidence that mails to or from Bechuanaland were carried on this flight.

Connections would presumably have been made at Bulawayo (for Francistown) or Kimberley (for Lobatsi). Imperial Airways provided special 'Springbok' type covers for use on this flight.

3. Jan 1932. Imperial Airways 1st Regular Service to South Africa

a. Southbound. The first flight departed London on 20 Jan 1932 and reached Salisbury on 31 Jan, Johannesburg on 1 Feb and Cape Town on 2 Feb. I have seen no evidence that Bechuanaland mails were carried on this flight. Imperial Airways provided special 'Speedbird' type covers for use on this flight and the balance of their 'Springbok' type were also available.

b. Northbound. The first flight departed Cape Town on 27 Jan, reached Johannesburg on 27 Jan and Salisbury on 28 Jan before crashing nearby. The relief machine experienced a similar fate near Broken Hill. The mail was then picked up on 5 Feb by the second scheduled Flight (ex Cape Town 3 Feb) and reached London on 16 Feb. Many examples exist of Bechuanaland mails from Lobatsi carried on this flight, usually using special covers privately produced in South Africa. I have recorded the following:

Lobatsi 22 Jan 32 via Kimberley 27 Jan to Pietermaritzburg, Bulawayo, Mpika, Dodoma, Nairobi, Kampala, Khartoum, Alexandria, Athens, Torino, Paris (fig.3), London.

Examples from other places seem much scarcer:

Francistown 23 Jan 32 via Bulawayo 25 Jan to Oxford 16 Feb (fig.4).

4. Mar 1934. Rhodesia & Nyasaland Airways (R.A.N.A.) 1st Flight
Salisbury - Blantyre - Limbe

This flight departed Johannesburg on 8 Mar 1934. Bechuanaland mails were presumably sent there overland. The special cachets were applied at Salisbury. My example (fig.5) from Lobatsi 5 Mar is backstamped Blantyre 9 Mar and Limbe 9 Mar.

5. Nov 1934. Imperial Airways and Qantas Empire Airways 1st Flight
England - Australia

The existing Cape Town - London service connected with this first flight at Cairo. Bechuanaland mails have been seen from Lobatsi 26 Nov 1932 to Brisbane and to Sydney 21 Dec (fig.6).

6. Jun 1937. Introduction of 'All-Up' Rate on the London - Cape Town Route

In 1937 the transport of mail by air without additional charge was introduced within the British Empire. The 1st flight on the South Africa route left London on 29 Jun. A special Imperial Airways cachet was applied to some covers. The example illustrated (fig.7) has a South African P.O. Mafeking arrival c.d.s.. Others have the Type 2C37 Bech Prot/H.O. Mafeking c.d.s., also dated 7 Jul.

(to be continued)

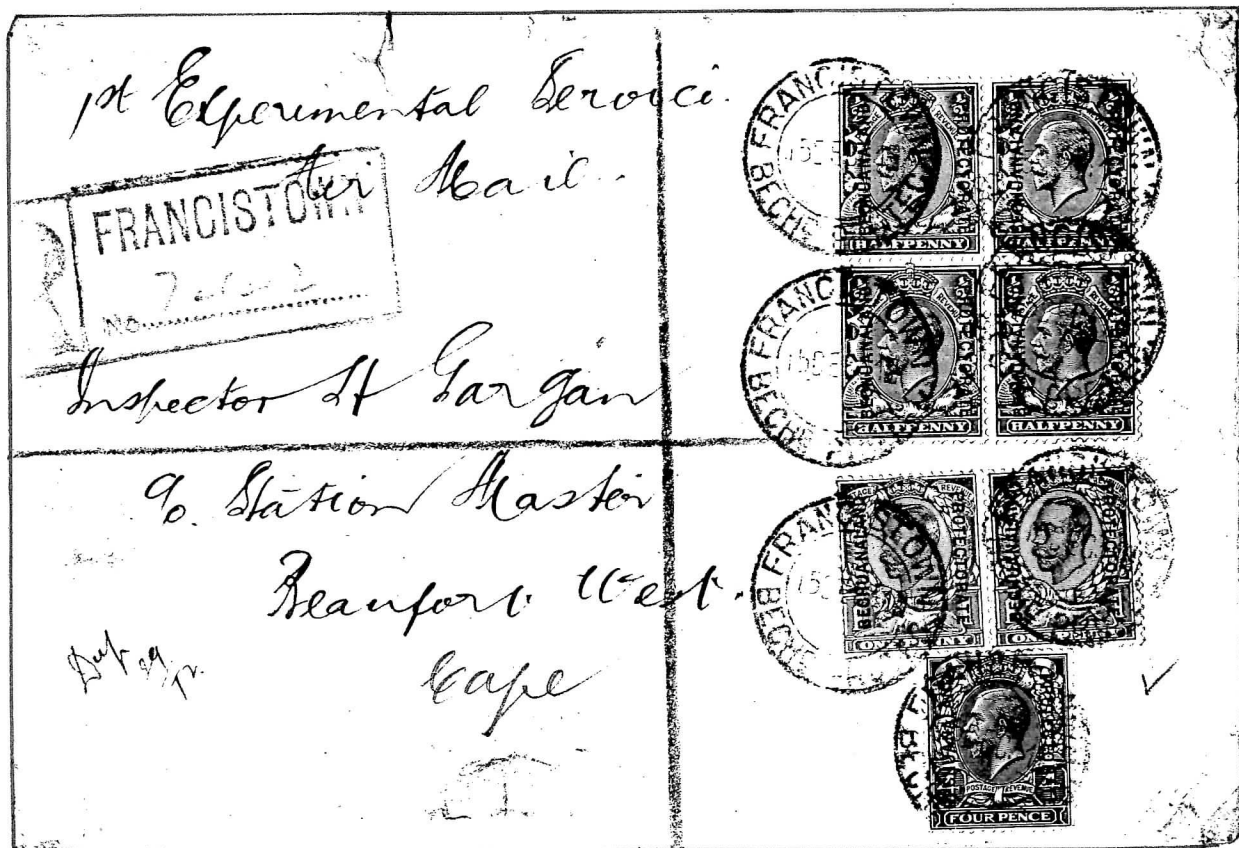


Fig. 1

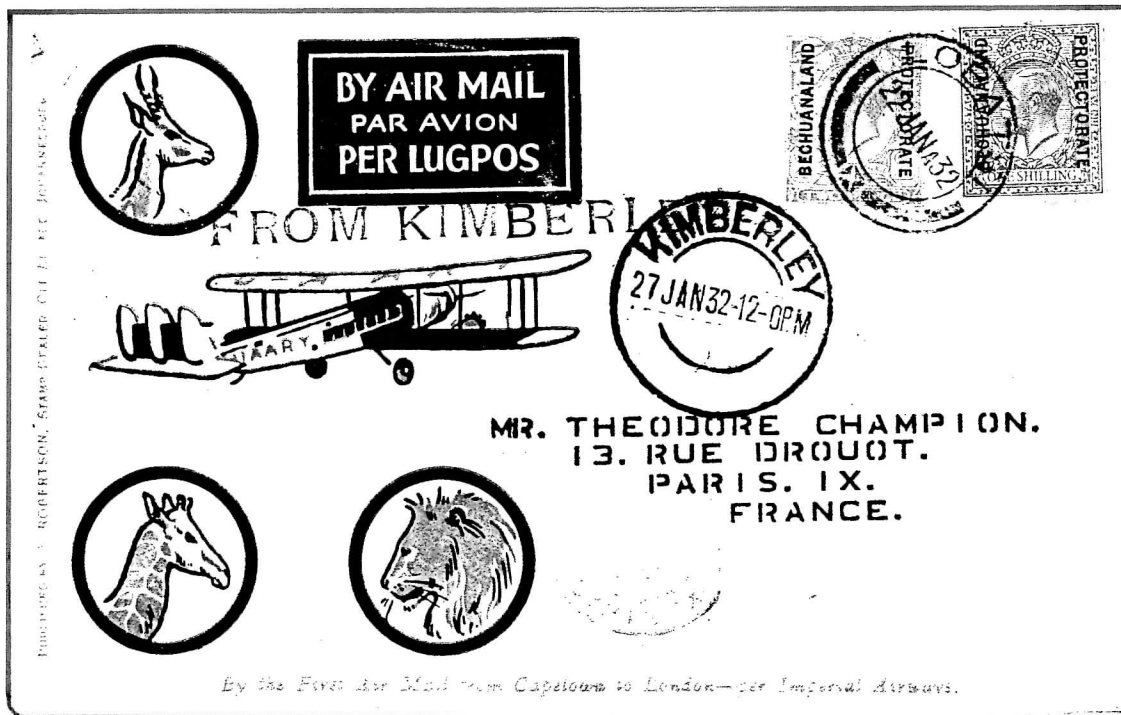
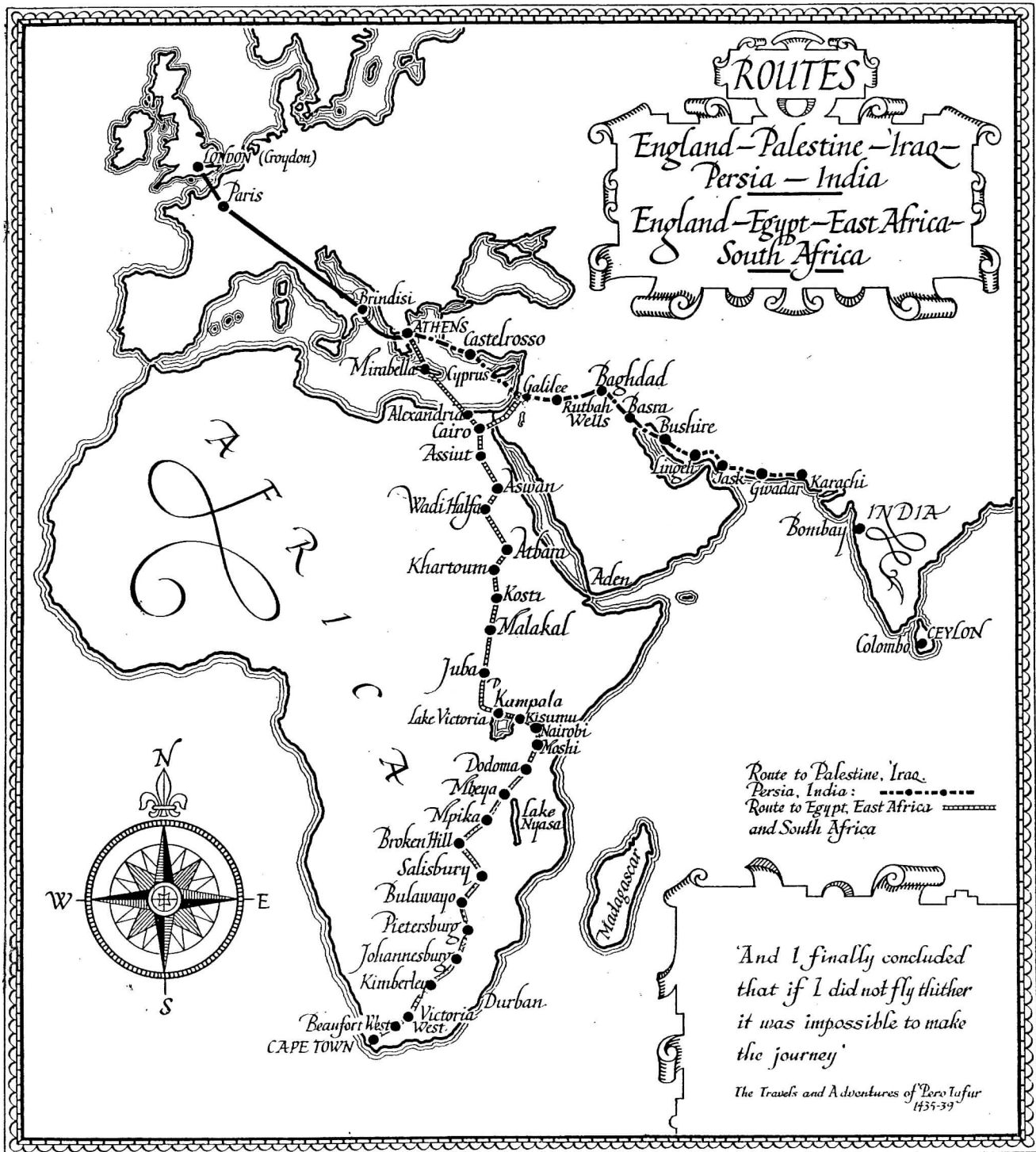


Fig. 3

Fig. 2

IMPERIAL AIRWAYS GAZETTE



Printed in Great Britain by Eyre & Spottiswoode Limited, His Majesty's Printers, East Harding St., London, E.C.4, and published by Imperial Airways Ltd., London



Fig. 4

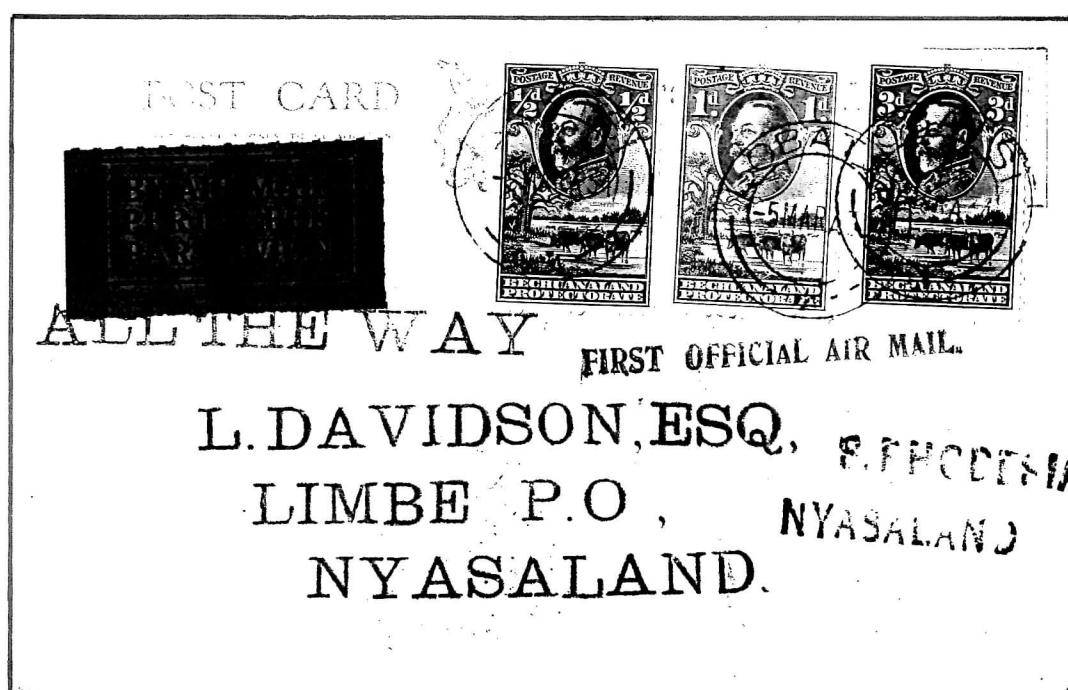
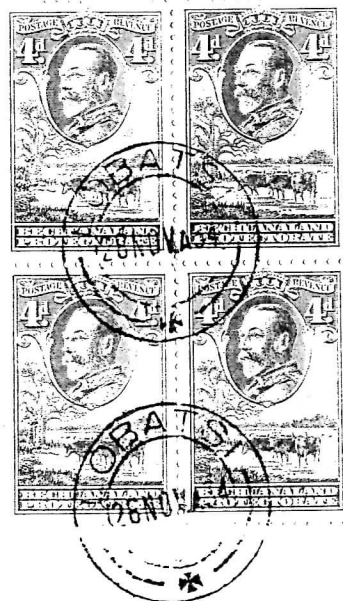
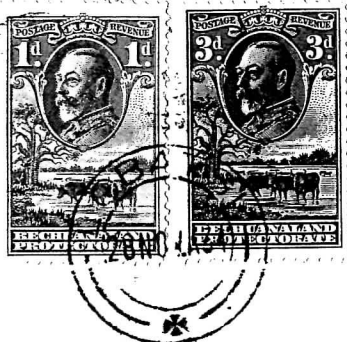


Fig. 5



OPENING OF THE AIR MAIL
SERVICE BY IMPERIAL
AIRWAYS AND QANTAS
EMPIRE AIRWAYS
BETWEEN ENGLAND
AND AUSTRALIA



Mr. L. A. Wyndham,
Poste Restante,
SYDNEY,
Australia.

via Cairo.

Fig. 6

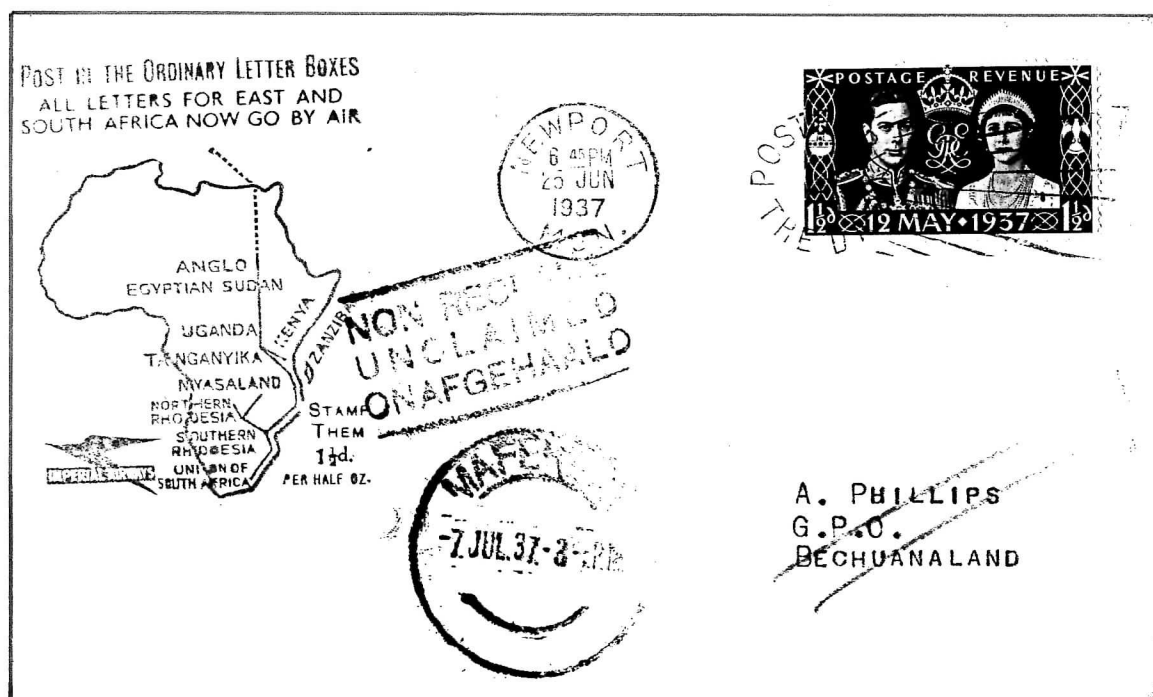


Fig. 7

THE RUNNER POST - INDEX TO VOLUME IV

Issue Nos. 13, 14, 15 and 16; Dec 1988, Mar - Sep 1989; pages 217-294

Issue number is now given before the page number:
13.223 indicates issue No. 13, page 223

African (A) Pioneer Corps	15.265-269	Postmarks, Letters Ma-	14.248
Bisects 1960/61	15.260, 16.280	Postmarks, Letter P	16.290-294
BONCs	16.278-280	Presentation Packs 1947	14.243
British West Charterland - Ngami	16.284-289	Q.E.II Omnibus flaws	14.246-247
Charterland, B. West - Ngami	16.284-289	Registration Labels - Typology	15.270-275
Francistown	15.261-262	Railway - Kimberley & Bechuanaland	16.277
Holmes, H.R.	14.240	Seahorses, Re-entry	16.251
Inoculation Siding	13.223	Setlagoli	15.258
In the Auction Room - Reports	13.225, 14.244-245	Shades, 1923-24	13.223
Kanye	14.241	'Tati excised'	15.261-262
Military Telegraphs	15.259	Taungs Station BONC	15.258
Moremi	14.242	TB Labels - B.P.	15.260
Ngamiland	16.284-289	G.B. Overprint Varieties,	16.282-283
Oates	13.223	Tuli	13.225-227
'Oates Correspondence'	13.224		
Ootsi / Outs	13.227, 16.277		
Overprints, Varieties of, on GB	16.282-283		
Pioneers, African	15.265-269		
Postal Stationery, B.P.	15.263		
Postal Stationery, Botswana	15.263-264		
Postcards	14.241		
Postmarks, Botswana	13.228-237		

BECHUANALANDS AND BOTSWANA SOCIETY

POSTAL AUCTION NUMBER 6 (UK)

Closing Date: Thursday 23rd August 1990

Another 100+ lots for your delectation, covering everything from Victorian revenues to modern first day covers, postage dues to telegraphs.

The rules governing this auction were published with Runner Post No. 8. Please remember especially the bidding steps (50 pence up to £5, £1 up to £100, £10 thereafter) and that no lot may sell at less than the reserve or half estimate. All bids must be in sterling and should be sent, before the closing date, to: Tony Chilton, 56 Framfield Road, Mitcham, Surrey CR4 2AL, U.K.

BRITISH BECHUANALAND

- 1 Unappropriated 2d (SG 11) strip of 4 used on piece, cancelled smudgy MACLOUTSI (Nov 15 1893) and additional VRYBURG cds (Nov 25) Est £3
- 2 Unappropriated 1/- with clear GABERONES STATION (Mar 10/90) single circle Est £6
- 3 1887 £5 fiscally used on piece with purple oval Office of the Assistant Commissioner Gaberones 19 JAN 99 datestamp Res £20
- 4 1891 2d on Cape (overprint reading up) 2 mint copies showing broken 's' or broken 't'. Also overprint down, used copy with broken 'i' in British. Est £2
- 5 1891 4d with L of Bechuanaland almost missing. Gaberones cds. Also 1897 Protectorate ½d and 2d (SG 59,62) with Lobatsi 1901 cds. Est £1.50
- 6 1895 2d on Cape mint bottom margin vertical pair, the lower stamp with broken 'ch' in Bechuanaland (see Holmes p.61) Res £20
- 7 KEIMOES JU 26 95 single circle on QV 1d lilac (SG 33) Est £8
- 8 QV 4d (SG 35), strip of 3, pair and single used on piece with 'Court of Assistant Commissioner/Northern Protectorate' oval Est £2
- 9 Union KG5 1d with type I KEIMOES BECHUANALAND cds dated JA 30 17 (later than noted by Holmes) Est £2.50
- 10 Postal Stationery cut-outs. 4d vermilion envelope (die date 28.4.90), FOUR on 2d envelope, 1d on GB wrapper Est £1
- 11 1888 overprint on GB 1d Wrapper (H&G 4) used at Vryburg (Nov 14 1895 - 2 days before annexation) £15
- 12 1886 1d postcard on Cape, H&G 1, mint Est £1
- 13 1888 overprint on GB 1d Postal stationery card (H&G 4) used with additional ½d stamp (SG 9) to Germany, cancelled Vryburg, Sep 29, 1893, no message but German arrival cds on reverse. Est £18
- 14 1894 postcard on Cape (H&G 5, 2 copies) and ½d buff postcard on GB (H&G 2) unused Est £1
- 15 Essay for the 1887 registered envelope. The overprint is without the FOUR surcharge and cancelling bars. The envelope is GB size F 2d with compensation details on back (see Holmes p.66, type 3) Res £75
- 16 1887 4d on 2d GB registered envelope. Size G, 55° bars H&G 5a mint Est £8
- 17 1889 overprint on Cape registered envelope size H (H&G 6a) mint Res £18
- 18 1889 overprint on GB vermilion registered envelope (28.2.89 on flap) size H (H&G 7a) mint Res £14
- 19 1889 overprint on GB vermilion registered envelope (28.2.89 on flap) size H (H&G 7a) handstamped SPECIMEN Res £22
- 20 1889 4d vermilion on GB registered envelope, die dated 1.3.89. Size K, H&G 7b, unused, vertical crease Est £5

BECHUANALAND PROTECTORATE

- 21 TATI/MR/3 (blank base and '3' inverted), three part strikes (making full cancel) on unappropriated QV 1/- green (SG 15) Est £10
- 22 BONC '1145' (Gaberones Village), complete strike on unappropriated 1/- green (SG 15) on piece Est £8
- 23 MOCHULI (Aug 5/97) on unappropriated 2/- (SG 16) Res £22
- 24 MOCHUDI central clear strike in violet on QV 2d (SG 62) Est £18
- 25 KE7 1d with Palapye triple circle postmark. Also KG5 ½d, 1d (2 shades), 2d script wmk, ½d and 1d block cypher wmk. All used Est £2.50
- 26 KE7 2½d unused, no gum Est 50p
- 27 KG5 cypher wmk ½d (SG 73) lower left block of 6 with control 'C13' Est £8
- 28 KG5 cypher wmk 1d (SG 74) lower right strip of 3 (fault on 1) with control 'V 23' Est £6
- 29 KG5 cypher wmk 1½d (SG 75) lower left block of 6 with control 'O 19' Est £17
- 30 KG5 cypher wmk 2d (SG 76) lower left block of 4 with control 'D 14' Est £12
- 31 KG5 cypher wmk 2d orange die I (SG 76a) lower left block of 4 with control 'R 21' Est £12
- 32 KG5 cypher wmk 2d die II (SG 77) lower left strip of 3 with control 'W 23' Est £20
- 33 KG5 block wmk 1d (SG 92) lower right strip of 3 with control 'A 24' Est £12
- 34 KG5 block wmk 2d (SG 93) lower left strip of 3 with control 'B 24' Est £12
- 35 1913 KG5 set less 1½d and 2½d (2d is die II); 1932 definitives to 2/- (less 1/-); also QV 1897 2d and British Bechuanaland ½d (SG 9), 1888 2d on 2d and 1891 1d and 2d (SG 31 & 32). All mint Est £12
- 36 MAHALAPYE relief cancel (18 DE/1930) on KG5 ½d on piece Est £15
- 37 KASANE (Aug 1925) dc on KG5 2d (SG 93) Est £8
- 38 MAHALAPYE large sc with spacer arcs on KG5 2d (SG 77) Est £3
- 39 1915 Waterlow 'Seahorse' 2/6 very fine mint showing re-entry (SG 83a) Res £480
- 40 1932 KG5 10/- 'Cattle' superb fiscally used on piece with oval 'Registrar Special(?) Court' 19 Sep 1938 Est £18
- 41 PALAPYE ROAD double circle on KG5 1d Jubilee Est £3
- 42 GABERONES VILLAGE dc on KG5 1d Jubilee Est £3
- 43 KG5 1d, 2d (2), KG6 ½d, 1d (single and pair), 2d (2 singles and a pair), QE2 2d with clear postmarks of Serowe, Palapye, Mochudi Village, Mahalapye, Kanye, Ghanzi, Debeeti and Francistown. Est £2.50
- 44 1938 KG6 10/- (SG 128) perforated SPECIMEN diagonally (Holmes type 1, Samuel type W8a - missing perf pin in 'S', also missing pin in 2nd 'E'!). Fine Res £18
- 45 20 covers to UK with KG6 definitives to make up 1½d, 2d, 3d, 1/3 or 2/6 rates. Also a front with KG5 4d. Variety of cancels. Varied condition Est £20
- 46 QE2 2d, 3d, 2/6 and 5/- used on part of a telegram with SEROWE cds's Est £4
- 47 QE2 2d, 1/- and 10/- used on part of a telegram with SEROWE cds's Est £4
- 48 QE2 10/- mint imprint pair of type 2, second printing (SG 167b) Est £4
- 49 1961 decimal overprint set, unmounted mint, with all basic overprint types (except the R1 which is type 2, 2nd printing) 15 stamps. Est £1.50
- 50 QE2 3½c on 4d, 4 pairs with all combinations of Types I and II, each with wide surcharge on right stamp (cat £66.30) Est £22
- 51 1965 New Constitution 2½c with 'lake' flaw, mint Est £2
- 52 QE2 1965 'New Constitution' u/mint vertical left marginal pairs of 2½c and 12½c the lower stamp of each with white blob on map flaw (SG 186/8 V6) Est £2
- 53 QE2 1965 'New Constitution' u/mint vertical right marginal pair of 2½c, top stamp with lake flaw (SG 186 V7) Est £2
- 54 Fiscally used range of 28 stamps incl SG 33,35,64,125,152 (5/- used on piece with 'Registrar of Births and Deaths' oval) and Botswana values including R1 (SG 218) Est £4
- 55 KE7 Transvaal £5 revenue overprinted BECHUANALAND PROTECTORATE in capitals (larger B and P) B&H 8, used, some slight rubbing Res £18
- 56 KE7 Transvaal 2/6 revenue overprinted BECHUANALAND PROTECTORATE in large capitals B&H 9, used Res £12

- 57 TAUNGS STA/PK/PO (2 May 1956) on 1½d Union leopard's head illustrated post-card
Est £4
- 58 File copy of telegram sent in code to London by the Tati Company. Francistown 30 AUG 54 cds
Res £13
- 59 File copy of telegram sent to Bulawayo by the Tati Company. Francistown 30 AUG 54 cds
Res £13
- 60 Resident Commissioner/Official Free/Bech.Prot.Govt. oval cachet on a remaindered Royal Visit 1947 9x4 envelope, overprinted 'On Government Service'. Also a similar envelope used with the Royal Visit stamps cancelled Royal Visit Lobatsi 17 APR 47.
Est £1.50
- 61 Similar Official Free cachet on a re-used 9x4 Union OHMS envelope bearing the Govt. Printer's Official Free cachet. 1949 Mafeking cds
Est £1
- 62 Similar Official Free cachet on a British OHMS 9x4 envelope. 1949 Mafeking cds.
Est £1
- 63 Resident Commissioner/Official Free/Bechuanaland Protectorate cachet on 5½x4 OHMS envelope with 1950 Mafeking machine cancel. Envelope rather crumpled.
Est £1
- 64 Two scruffy covers (one with original letter) from Serowe to Swaziland, with KG6 1½d (May 1950) or 2d (July 1950).
Est £1
- 65 FDC's for Royal Visit, Independence and University of Botswana, Lesotho & Swaziland.
Est £1
- 66 Dept of Posts & Telegraphs, Bechuanaland Protectorate oval cachet on a philatelic circular with Postage Paid Lobatsi cds. Also the same cachet but now Republic of Botswana on 1966 OHMS envelope with Lobatsi oval date stamp (altered Coronation cancel)
Est £1
- 67 Two covers to Nairobi, one with vertical pair 2½c on 3d, other with 10c on 1/- and 12½c on 1/3. Both with Lobatsi 1 V 61 cds.
Est £1
- 68 1889 registered envelope, overprint in black on Cape size I, H&G 1 unused but water stained
Est £25
- 69 KG5 4d on 3½d blue GB registered envelope, size F, date code 'CO'. H&G 13 mint
Res £12
- 70 QE2 6d registered envelope size G, 2 mint copies.
Est £2
- 71 QE2 5c registered envelope size G, 2 mint copies.
Est £2
- 72 QE2 5c registered envelope, size H. Also a privately produced size G with no embossed registration fee stamp. Both mint.
Est £2
- 73 KG6 1d postcard (mint), QE2 2c hoopoe card (2 mint), Botswana 2c hoopoe card (used)
Est £8
- 74 1945 Union air mail letter card (English) overprinted Bechuanaland, mint.
Est £1
- 75 QE2 5c on 6d airletter, mint.
Est £1

BOTSWANA

- 76 1967 Chobe Game Reserve 35c unmounted mint vertical pair, the lower with the 'Ghost' flaw.
Res £2
- 77 1969 Christmas 1c unmounted mint horizontal strip of 3. Left stamp with flaw on baby's bottom, centre stamp with elongated 't' of 'cent'
Res £1
- 78 1976-7 surcharges 7t on 7c. Two used singles, one with overprint at bottom right, one at top right.
Res £12
- 79 1976-7 surcharges 50t on 50c. Two used singles, one with overprint at bottom right, one at top right.
Res £12
- 80 Presentation booklets of the 1974, 1978 and 1982 definitives. Also large illustrated FDC of the Centenary of the Protectorate set.
Est £2
- 81 20th Anniversary of Independence. Complete set of 12 FDC's, each with a miniature sheet cancelled with one of the 12 special handstamps
Res £8
- 82 1971 Elephant postage due set, mint left marginal copies.
Est £1
- 83 Window envelope with S.African type 35mm circular T10/10 postage due mark, plus horizontal pair zebra 10t postage due stamps, perforation 12½ cancelled Gaberones 7 VIII 82
Est £3.50

- 84 Ten registered envelopes 1968-84 with registration labels of Lobatsi, Lobatse, Mochudi Village, Serowe, Jwaneng (2), Maun, Gaborone (3). Est £1
- 85 51 registered envelopes, each with a different label from 37 different offices. 1987-8 period, franked at 48t or 52t. Est £20
- 86 Six different mint air letters:- 7t, 10t, 20t, 35t (blue Baobab, brown plane), 15t, 20t (brown Baobab, blue plane) Est £1.50
- 87 Thirteen covers 1965-84 showing various rates, with cds or machine cancels. Est £1
- 88 23 covers, cards and registered envelopes used 1982-90 with variety of frankings, cancels and labels. Mostly fine Est £15
- 89 Eleven picture postcards of views and wildlife, five different rates, clear postmarks Est £7.50
- 90 164 'Hinchcliffe' covers, each with a different town or village postmark from 1985-6. Res £65
- 91 Postmark kiloware, mostly 1986-88. Weight about 250g. Est £6
- 92 Similar lot. Weight about 200g. Est £5
- 93 Similar lot. Weight about 200g. Est £5
- 94 Set of 6 special covers prepared by the Botswana Philatelic Society to Commemorate the visit of the Prince of Wales in March 1984. Cancelled at Gaborone (26,27,30th), Serowe (28th), Orapa (28th) and Lobatse (29th) Est £3
- 95 Official commemorative cover for the opening of Sir Seretse Khama Airport on 9 April 1988. With special cachet and signed by captain and crew. Carried on first flight from airport (to Gatwick), said to be one of only 4 such covers. Res £8
- 96 Gaborones Agricultural and Trade Show 24 MAY 1968 cds on unaddressed plain cover. 3c stamp. Est £1.50

OTHERS / LATE LOTS

- 97 Stellaland 1884 6d unused, no gum. Slight stain at left Est £2.50
- 98 Stellaland revenues, without monogram:- 2/6, 5/-, 10/-; with 'JPM' monogram:- 1/6, 2/-, 2/6 (inverted), 5/-, 10/- (inverted) all fine mint with gum. Res £60
- 99 Stellaland revenues: without monogram 1/-, 5/- and 10/- all used with manuscript cancel. Each with faults. Est £12
- 100 BONC 678 (Gubulawayo) on Protectorate 6d surcharge (SG 45, cat £40) Est £20
- 101 BSA Company stamps with GUBULAWAYO postmarks (with 'Bechuanaland' removed), values 1d to 6d (5 stamps), all with good/full strikes. Est £8
- 102 Fournier forgery of MAFEKING cds (FE 11 00) Est £4
- 103 Union 2/6 Native tax stamp overprinted 'Bechuanaland / Protectorate / 6/- / Revenue', used. Est £7
- 104 Military Telegraphs overprinted on Cape 6d purple, fine with pen cancel in red. Res £8
- 105 Army Telegraphs - ovptd on GB ½d vermilion and unappropriated Dies 1d, 2d, 6d and 1/- all fine mint Est £20
- 106 1885 1/- green (SG 8), fine used with part Mafeking/Bech. cds. Res £55
- 107 1887 QV Unappropriated 10/- green (SG 19) fine used with part KURUMAN cds Res £120
- 108 Postage Dues: 1926 ½d emerald (SG D1) fine used with Ramoutsa 3 Dec 29 cds. Res £15
- 109 The Mafeking Mail special 'Siege Slips' - newspapers printed during the siege. 24 different issues (with dates in brackets):
No.12 (16/11/1899); 14 (20/11); 17 (23/11); 29 (8/12); 31 (12/12); 32 (13/12); 33 (15/12); 47 (6/1/1900); 59 (26/1); 68 (8/2); 69 (9/2); 71 (15/2); 78 (23/2); 80 (26/2); 86 (6/3); 89 (9/3); 91 (13/3); 92 (15/3); 96 (21/3); 101 (27/3); 104 (30/3); 124 (21/4); 127 (25/4); 128 (26/4). Condition is generally good though some have tears, rough edges or other faults commensurate with their age. Interesting reading. Res £70