

THE RUNNER POST

The Bechuanalands & Botswana Society



The KEVII SWAZILAND REVENUE ONLY
Botswana 50 years of Definitive Stamp Issues
New and 2016 Projected Issues - Botswana Postmarks

Rare Stamps - numbers recorded

Barred Oval B Cancellations

Bloemfontein, Bloemfontein O where art thou Bloemfontein





www.bechuanalandphilately.com

List of Officers

Hon. Chairman

Tony Stanford

PO Box 2675, Maidenhead, SL6 9ZN,

Telephone +44(0)1628 482270

Email TonyStanford@btopenworld.com

Hon. Membership Secretary, Treasurer, Webmaster and Editor

Otto Peetoom

Roos, East Yorkshire, HU12 0LD, UK.

Telephone +44(0)1964 670239

Email ottopeetoom@btinternet.com

Hon. Secretary & Archivist

Brian Hurst

Field House, 54B Pease Hill Road,

Ripley, Derbyshire, DE5 3JH, UK

+44(0)1773 742619

Email jbhurst@btinternet.com

Committee Members

Brian Trotter

bjayt43@yahoo.com

David Bird

david_polyg@hotmail.com

Overseas Representatives

Botswana - Peter Jukes

PO Box 26746, Game City Kiosk,

Gaborone, Botswana

Email peterjukes391@gmail.com

South Africa - Alan MacGregor

PO Box 515, Simon's Town, 7995, RSA

Email alan@rhodesia.co.za

North America - Peter Thy

PO Box 73112, Davis,

CA 95617-3112, USA

Email thy@kronestamps.dk

The Society thanks Graham Edwards (Graphic Designer) for the front cover design

Contents

	Page
Contents - Editorial - Obituary - New Members.....	2294
Philatelic Forum - Society News - Meetings - 2016 AGM.....	2295
Philatelic Forum - The KEVII SWAZILAND REVENUE ONLY Issues.....	2296
Philatelic Forum - TATI with BECHUANALAND at foot and without.....	2296
The Bechuanaland and Botswana - A Financial Reconciliation 2015.....	2297
Bechuanaland, Small figure '4' of the 1888 'Protectorate' issue with Manuscript Cancellation....	2298/00
Membership News.....	2300
Botswana Postmarks (2014) Update - Editorial comment.....	2301
Botswana - Fifty Years of Stamps Part I.....	2302/07
Bechuanaland Protectorate, Rarer Stamps, numbers recorded.....	2308/09
The Oval Barred B (Killer cancel).....	2310
Recent Botswana Issues - Bloemfontein, Bloemfontein where art thou?	2311

2016 Subscriptions

Inland £17

Europe £22

Overseas £25

The above includes a copy of *Southern Africa Philately* with each Edition of *The Runner Post*

Editorial - There has been no response or the remotest flicker of interest from anyone re another Editor for *The Runner Post*. On the one hand several individuals expect it to materialize on time, yet the amount of input remains almost none existent.

Currently I edit three philatelic journals and operate two websites - one on behalf of this society and another for the *South African Collectors' Society*. I am currently reviewing fifty years of Botswana Stamp Issues and Part I (Definitives) appeared in the April edition of *Gibbons Stamp Monthly*. On the assumption that not many of our members subscribe to GSM, that article (In its original form) appears in this journal.

Having run a mail order business for over thirty years and sent out 100's of pricelists and postal auctions I am fully aware that space = cost and nowadays postage exceeds printing costs.

In November last year I made a point of gaining sight of the journals of all the other Southern African Societies. I wrote an open and honest review and was requested not to circulate it as it may upset a few. I was shocked just how bad some of them are...in most cases the emphasis appears to be on filling as many pages as is possible. A common trait is to use wide margins and to spread a three page article over ten pages.

My rule of thumb is that if an article is too long, people won't read it. In my opinion a compact journal with worthwhile content is preferable to...bumper journals full of hot air.

Obituary

Dennis Firth

It is with sadness that I have to report the death of Dennis on the 16 March at the age of 80.

Dennis was a long-standing member of the Society who always preferred to remain in the background and yet was one of the most regular attendees at meetings all the time I knew him.

His depth of knowledge was prodigious and some of the rarities he would produce from time to time gave an insight into the range and quality of his collection.

Dennis was an ex-railwayman and occasionally would tell me, with a smile on his face, how he invariably returned home to Leeds every night when visiting Stampex because of his entitlement to unlimited first class rail travel.

His unwavering support for the Society will be sorely missed.
Brian Hurst

Dennis was also a keen collector of South West Africa
Editor

New Members

We welcome two new members who found us via our website Peter Childerstone from Bedford and Andrew Briscoe from Botswana.

Meetings - 4/5 June 2016 Leamington Spa

This will be the third annual weekend conference held by the *South African Collectors' Society* and they have kindly extended an invitation to all members of the BBS. Contact Simon Peetoom if you wish to attend.

15 - 16 July York Racecourse two day Stamp fair

14 - 17 September Stampex London

Currently there are no plans to meet, but that may change.

4 - 6 November 2016 Annual Southern Africa Conference

This is effectively the highlight of the year for the philately of Southern Africa and is well attended each year. Many of our members are regular 'faces' at this event. Those of you who have not attended in the past ought to consider doing so. If a full weekend does not appeal, I recommend a Saturday visit

Minutes of the AGM held, Friday 19 February 2016 from 11.30 am at the BDC, Islington



Present:

Tony Stanford (Chairman), Brian Hurst, Otto Peetoom, Brian Trotter, Alan MacGregor, Philip Kaye, Arnold Berman and Colin Palmer.

1. Apologies for absence were received from David Bird, Alan Biddlecombe, Don Jeffreys, Peter van der Molen, Bruce Warrender

2. Approval of minutes of the AGM held on 21.2.2015

These were unanimously approved excepting section 11 dealing with 'Election of Officers' which was resolved at the EGM held on 18th September 2015.

Proposed Brian Hurst Seconded Brian Trotter

3. Approval of minutes of the EGM held on 18.9.2015

These were unanimously approved

4. Matters arising

i. Scanning back issues of *The Runner Post* has been completed. Neville Midwood had scanned all issues from RP20 Brian Hurst has now scanned issues 1-20 and put them on a cd of which he gave a copy to Committee members for evaluation and feedback.

ii. BBS meetings will be held at Leamington Spa during the South Africa Collectors' Society weekend in June and the Southern African Societies' weekend in November.

Members interested in attending should contact

Simon Peetoom (simon@africastamps.co.uk)

iii. Deletion of the old BBS website and updating those referring to it has been done by Neville Midwood

iv. Another joint BBS/ GB Overprints Society auction featuring a good number of Bechuanaland lots will be held in the Spring. The Auction List will be sent to all members by email and to other members by post.

5. Membership Secretary/Treasurer's report

After a lot of hard work Otto Peetoom has got the Society Accounts back into order and at the time of the meeting 81 of the 90 members had paid their 2016 subscription. At statement of Account is being distributed with these minutes. The meeting heartily thanked Otto for doing so much to achieve this.

6. Editor's report - Otto Peetoom confirmed his intention to provide three copies of the RP during 2016 together with three copies of the Southern African Philately journal and reminded the meeting that he hopes a new editor can be found.

7. Chairman's Remarks - The Chairman thanked Otto on behalf of the Society for his work in getting the Society back onto a sound financial footing and for standing in as Editor and thanked Brian Hurst for his support as Secretary and for agreeing to continue as secretary for one more year.

8. New York 2016 May 28 - June 4 - Peter Thy has arranged a discussion session on 30 May to gauge the vitality and health of the Southern African specialist societies

The BBS is sharing a booth to promote the society amongst a cluster of booths reserved for the Southern African Societies, and a rota will be arranged amongst the societies to man the booths. Any members attending NY2016 who would be willing to spend 2 hours helping to man the booths should contact Tony Stanford.

9. Bechuanaland & Botswana Philately Website

The website is now well established and is expected to become the principal means of attracting new members.

10. Any Other Business

Postmark study

It was agreed that the editor would continue publishing the Botswana postmark study in the RP taking advantage of the improved images and information being provided by Bruce Warrender but using a more condensed presentation.

The ABPS Handbook

It was noted the recently published ABPS handbook contains out of date information on the BBS and many other societies although in the case of the BBS and other societies the latest details are available through the ABPS website. The Chairman will write to inform the ABPS of this.

The meeting ended at 12.50 p.m.

11. Next meeting

It is planned to hold the next AGM at the Spring Stampex on Friday 17 February 2017 at 11.30am.

GERALD BODILY

PO Box 475, Richmond, Surrey
TW9 3DN - UK

British Commonwealth in great strength
Postal History, early Covers, Cancellations,
Varieties and Multiples, Essays, Colour Trials,
Die and Plate Proofs, Specimens plus a great deal of
Unique material from Printer's Archives

I participate on a regular basis at all
Major Exhibitions in the United Kingdom and
Overseas

TEL: +44(0)208 255 1219

Email: rbcollect@yahoo.co.uk

The KEVII SWAZILAND REVENUE ONLY Issues

By Tony Stanford

From 1904 the KEVII Transvaal 1d and 6d postage and revenue stamps were issued as revenue stamps in Swaziland overprinted *Swaziland Revenue Only* in three lines to prevent them being used for postage. There were four separate issues of these revenue stamps with distinctively different overprints.

The first 1904 issue was overprinted in seriffed letters with the three lines closely spaced and a full stop after **only** on the 1902 Transvaal issue with watermark Crown CA and perforation 14. The earliest recorded date of use is 23 November 1904 and neither stamp is recorded on a document.



1d grey-black & carmine



6d grey-black & orange-brown

6d also known in grey-black and orange



The third 1909 issue was overprinted in black ink on the 1904 Transvaal issue with watermark multiple Crown CA and perforation 14. This setting of the overprint has the lines widely spaced and uses un-seriffed letters with a full stop after **only**, which in this case has a capital O.

The earliest recorded date of use is 12 March 1909 and neither stamp is recorded on a document.

The fourth and final 1914 issue was overprinted in blue-black ink on the 1904/5 Transvaal issues.

The one penny was overprinted on the 1905 issue with watermark multiple Crown and the six pence on the 1904 issue with watermark multiple Crown CA and perforation 14.

This setting of the overprint uses un-seriffed capital letters with the two lines **REVENUE ONLY** spaced together above the King's head and **SWAZILAND** below the King's head. The earliest recorded date of use is 9 April 1915 and only the 6d stamp is recorded on a document.



The author would welcome any new or corrective information on these revenue stamps.

The images are from the collection of Michael Tanner of the Revenue Society and the information is from *The Revenues of Southern Africa: Part 3 Swaziland* by Brian Trotter & Neville Midwood.

TATI with BECHUANALAND at foot and without

By Andrew Higson

In January Andrew sent in a scan of a TATI BECHUANALAND AU 21 88 and wrote... *this 1/2 'Protectorate' stamp with a TATI / BECHUANALAND cancellation. I think it means another example of this cancellation has been discovered - it was just sold as an ordinary SG 40 on eBay, but someone else did also spot its potential. It looks genuine.*



The previous item prompted Andrew to look at his collection.



For the mutilated TATI date stamp Proud records 21 AP 1889. The example shown here is dated JA 11 89 and so predates Proud by over three months. Holmes shows this mutilated date stamp as NO 7 88 but was this a 'mock up' or does it exist?

Argyll Etkin Limited



Specialists in Southern African territories - When in London, please call in
We are open Monday – Friday 9am - 5pm
Our web store offers 1000's of items of stamps & postal history, immediately available
Our AUCTION SALES have proved popular with collectors for both buying & selling
Specimen catalogue on request

We have traded in London for nearly 40 years and still keen to make outright purchases of suitable material.

17 Waterloo Place (corner with Pall Mall) London SW1 4AR

Tel: 0207 930 6100

Fax: 0207 930 6109

Website www.argyll-etkin.com

Email: philatelists@argyll-etkin.com

The Bechuanaland and Botswana - A Financial Reconciliation 2015

By Otto Peetoom

Date	Details	Payments		Receipts		Balance	
1.1.2015	Opening balance					4777	80
2014	Outstanding payments made in 2015						
	PTS & Runner Post No 88 - Both paid by chq	854	88			3922	92
2014	Arrears collected						
	Peter Thy	120	50				
	Alan MacGregor	112	00				
	Joshua Horgan refund	268	70				
	Journal Advertising	150	00				
	Subscriptions	602	00				
	Administration	250	00	1253	20	5176	12
	January 2014 opening figure					4926	12
2015	Income						
	Subscriptions	1014	00				
	Journal Advertising	100	00				
	Bank Interest	12	82				
	Hurst journal sales	44	00				
				1170	82	6096	94
2015	Expenses						
	PTS - paid by chq	96	00				
	Website - paid by chq	265	12				
	ADPS	26	40				
	Postage	48	85				
	Envelope/printing	44	00				
	Runner 89 & 90	450	30				
	Administration	75	25	1005	92	5091	02
2016	Subscription in advance received in 2015			94	00		
31.12.2015	Actual end of year balance					£5185	02
	Bank account reconciliation						
	Bank balance 31.12.15					5707	32
	2016 Subs in advance	325	00			5382	32
	Expenses balance			197	30		
31.12.2015	Actual end of year balance					£5185	02

Assets		
Bank balance	5185	02
Arrears Sutton paid January 2016	12	00
Postage on hand (Used £409.08)	113	77
	5310	79
Subscriptions in advance	104	00
Nett Assets 31.12.15	£5206	79

2015 Notes

1. When I took over as Treasurer at the end of February 2015 there were no bank statements, no accounts and no cheque book and no indication which members were paid up to date.
2. A subscription and arrears campaign was undertaken that lasted into September 2015.
3. A call for 2015 subscriptions only commenced in March and sent out with *Runner Post* No 89.
4. Payments were received by DD, cheque, credit card, PayPal and cash, thus careful book keeping was essential.
5. **Postage** - Started with £474, bought (2015) £48.85, balance 31.12.15 - £113.77 - Used during 2015 = £409.08

6. Straightening the bank account out was another nightmare and took until the end of April. Subsequently I paid most of the expenses out of my own pocket. This has now been reconciled as indicated above.

2016 Notes

1. With advanced planning this year started on a more positive note. On 26 November 2015 I made a call for subscriptions via email and wrote to those without. Subscriptions started coming in by 30 November and continued through December.
2. On 4 January 2016 I emailed a reminder to those who had not yet paid and positive response brought in further payments. On 8 February I sent out a final reminder.
3. The result of the above is that 83 people have paid their subscriptions (By April 2016) and seven declined to renew.
4. In February our guaranteed income for 2016 stood at £1441.

Thank you

O. J. Peetoom

BECHUANALAND

Small figure '4' of the 1888 'Protectorate' issue with Manuscript Cancellation

By John Coates and Brian Hurst

Introduction



The history of the August 1888 issue commenced in 1887, resulting from a territorial dispute between Lobengula, Chief of the Matabele with headquarters at Bulawayo and Khama, Chief of the Bamangwato, with his Stool at Shoshong (Holmes, 1971). The Rev. John Smith Moffat was requested by Sir Sidney Shippard, based at Vryburg, to resolve the dispute.

In travels to Bulawayo Moffat communicated with Shippard by post carried by native runners and it was the success of this service that led to the inauguration of the Runner Post on 8 August 1888, between Bulawayo and Mafeking - Illustrated at left.

To define the cost of this service, which was limited to £300, and separate it from the mail system then in use in British Bechuanaland, recourse was made to surcharging the *Unappropriated dies* issue of Great Britain currently in use within the Crown Colony with the word *Protectorate* and additionally for the pence issues the value of the stamp itself.

For the pence values, the forme was set up to overprint a pane of 120 composed of 10 horizontal rows of 12 (Holmes, 1971, Part III, pp. 83-85). In the case of the 1/- to 10/- denominations, the setting was reduced to 84 through removal of the lower three rows and the value was omitted.

The Runner route between Bulawayo and Mafeking

After the miniature sheet issued by Botswana on 21 August 1972

Scale 1:400,000

In addition to the faulty first **o** in **Protectorate**, occurring in position 60 (Row 5 No. 12), Holmes reported...*a smaller fount '4' occurs in an unknown position in the setting.*

This stamp is classified as SG 44a by Stanley Gibbons.

Through a proclamation dated 8 August 1888, the cost of a letter not exceeding ½ oz from Bulawayo (Protectorate) to Mafeking (British Bechuanaland) was 4 pence - Proud (1996) page 261. This proclamation also states....*The first post under the new arrangement arrived at Mafeking on Monday.*

As the Proclamation is dated 8 August, this is clear indication that the service had already commenced and that the first post was received from the north. As stated in a Parliamentary Report, the service commenced on 1 August (Hurst, 2008).

Since the service was weekly from Shoshong to Mafeking and fortnightly between Shoshong and Bulawayo, the first post possibly originated from Shoshong. One article relating to SG 44a appearing in *The Runner Post* shows both a normal stamp and a mint copy of SG 44a in response to a question raised by Steve Wallace in *The Runner Post* No 24 1991.

The small figure '4' variety formed part of the collection belonging to Hamish Campbell, exhibited in Cape Town in 1991. A used copy was contained in the *County* collection, sold by Argyll Etkin in 2003. A mint copy described as *Small figure 4*, sold in Spink in 2002, is the variety *Damaged 4*.

The Stamp

The actual small '4' variety, in addition to having a height of 2.15mm compared with 2.4 to 2.5mm for the normal overprint, shows:-



Attenuated curve to the top of the first 'r' in *Protectorate*

Missing top to the second 't' in *Protectorate*

Small break in the third 't' in *Protectorate*

Weak break at the top of the diagonal stroke in figure '4'

SG 44a
with Small figure '4'



SG 44 normal overprint



SG 44 with damaged '4'

Stamps from the left hand part of a sheet generally have the figure under the 'c' of *Protectorate* and this shifts moving to the right of the sheet where it rests under, or to the left of, the first 'e'. Only in a few instances is it directly under the first 't' as is the case with the small figure '4'. Finally, the largest multiple existing today is a pair.

Plating

Over the past 25 years, an attempt was made to reconstruct a complete sheet of the 1d value SG41 and this is now 70% complete (Hurst, 2005). This reconstruction was carefully examined in an attempt to identify the print characteristics of the word *Protectorate* shown by SG 44a and also the position of this value with respect to the *Protectorate* overprint.

A block of twenty one values representing Rows 5-7, Positions 54 - 84 clearly shows the well-established damaged 'o' in *Protectorate* at position 60 See illustration on next page. Position 84 Ex Row 7/12 displays the print characteristics of the small figure '4' although the truncated top to the first 'r' in *Protectorate* is not so pronounced See SG 44a above.

Small figure 4 of the 1888 Protectorate Issue with Manuscript Cancellation

Cancellation



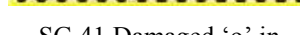
Prevalence. From the international

Distribution

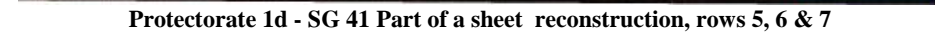
The left hand page of the account book of the Chief Distri

For clarity, entries on the right hand distribution page are





100



1

Following the initial distribution of stamps to the Protectorat

Summary and Conclusion

With only 20 possible exam

Previously ascribed to an unknown position in the sheet

At the inception of the runner post on 1 August 1888

Small figure '4' of the 1888 'Protectorate' issue with Manuscript Cancellation

Conclusion continued - A manuscript cancellation from Bulawayo is in keeping with the absence of a date canceller in September 1888. This suggests the writing on the stamp - B(?)ula - could be *Bulawayo*. This is indirectly supported by the practice of initialling stamps from Tati with the name of the town together with the date

The literature indicates a travel time of 21 days between Bulawayo and Mafeking and this is broadly consistent with the time indicated by the manuscript cancellation and Mafeking CDS on SG 44a

1888 Summary of stamp numbers and distribution dates

Ledger details are	Sheets 240 for ½; 120 for 1-6d and 84 for 1/-							Stamps			
Date / Issued to	½	1	2	3	4	6	1/-	2/-	2/6	5/-	10/-
20.6.1888: Sheets issued	100	200	200	15	20	100	100	420	252	168	84
	(1 x ½d sheet of 240 stamps damaged in printing)										
Total stamps issued	23760	24000	24000	1800	2400	12000	8400	420	252	168	84
Issued to Runner Post offices											
Gubulawayo	2	10	10	1	1	10	5	10	8	10	
Tati	2	10	10	1	1	10	5	10	8	10	
Shoshong	2	10	10	1	1	10	5	10	8	10	
Molepolole	1	5	5	½	½	5	2½	5	4	5	
Kanye	1	5	5	½	½	5	2½	5	4	5	
Sub-district Vryburg	40	50	10	7	5	3	3	44	52	44	14
Balance 1 July	52	110	150	4	11	57	77	336	168	84	70
Sub-district Vryburg	-	-	-	-	5	-	-	-	-	-	-
Balance 30 Sept	52	110	150	4	6	57	77	336	168	84	70
23 Oct: Sub-district Vryburg	20	20	5	-	5	5	-	-	-	-	30
Balance 31 Oct	32	90	145	-	1	52	77	336	168	84	40
26 Nov: Sub-district Vryburg	22	-	-	-	1	-	5	36	24	-	-
Balance 30 Nov 1888	10	90	145	-	-	52	72	300	144	84	40

Notes

- Depletion of 4d and ½d stamps in December 1888 resulted in production of the 1888-1889 provisionals (SG 51, 52 and 53)
- Stamps issued to the sub-district Vryburg office were probably forwarded to Protectorate offices although no record is available
- By June 1890, stocks of the 1888 Protectorate issue were nearly exhausted and British Bechuanaland stamps were authorised for use in the Protectorate
- The rarity of the shilling values with missing 'o' in *Protectorate* is related to 100 possible of the 1/-, 5 of the 2/- one of which is overprinted *Specimen* BEC1; three of the 2/6; two of 5/- and one 5/- plus a 10/- are both in the Royal collection.

References and bibliography

- Anon, 1987b. Curved foot to '2'. *The Runner Post* No 12, P. 147
- Argyll Etkin 24 September 2003. *The County* collections of Stellaland, Bechuanaland, Nyasaland and Zululand. Auction, Lot 1176.
- Argyll Etkin 20 May 2010 The David Wessely Collection of Bechuanaland Auction, front cover Lot 654
- Drysdall A.D. 2012. *Early Bechuanaland Protectorate mail*. *The Runner Post* No 83, pages 2075 - 2078.
- Holmes H.R. (1971) *Postage Stamps, Postal Stationery and Postmarks of the BECHUANALANDS*. Part III, *Bechuanaland Protectorate 1888 - 90*, Chapter 16, pages 83 - 87
- Hurst B. 2002 - The small figure '1' (SG 41a) *The Runner Post* No 56, pages 1376-1377
- 2005 - SG 41a - The small figure '1' revisited. *The Runner Post* No 62, pages 1504 - 1506
- 2008 - The start of the Runner Post service, *The Runner Post* No 72, page 1774
- Jurgens A.A. (1946) *The Bechuanaland: A brief history of the countries and their postal services to 1895*. RPSL
- KOI 1987a - The 2d issue of 7 August 1888. *The Runner Post* No 7, page 11
- The Runner Post* No 29, December 1992, pages 569 - 570

MacGregor A. 1987. *In the auction room*. *The Runner Post* No 12, page 145

Robson Lowe J.H. (1949) *The encyclopaedia of British Empire postage stamps*, Volume II, *The Empire in Africa*, pages 21 - 23

Spink 21-22 March 2002. British Empire stamps and postal history auction. Lot 137

Wallace S. Small figure '4' variety (SG 44a). 1991 *The Runner Post* No 24, Autumn-September, page 446

The Runner Post No 59, April 2004, page 1424

---000---

Membership News - Unpaid Subscriptions

All received two reminders thus, as per our Constitution, on 31 March they are deemed to have resigned.



On 5 May I sent out a 'last ditch' email in an attempt to try and persuade five South African collectors to pay their 2016 subscription...I won't be holding my breath!

Our Membership

Now stands at 83, Inland (42) Europe (7) Botswana (7) South Africa (14) North America (12) and Australia (1) - In line with many philatelic societies an annual loss of members is around 10% and that figure is likely to rise. Members of the stamp trade number 15 and represent 18.3% of the total.

The general response from our society is minimal, no one has made any comment on/or offered feedback on the additional journal *Southern Africa Philately*. There has been no response re the open invitation to attend the Leamington meeting in June. If you can't make the weekend, come for the day on the Saturday.

Botswana Postmarks (2014) Update - Info by Bruce Warrender

Office	No	Type	Diam	Date 1	Comment	Notes
BLUE JACKET	2	23 M 53(2)	38	23 APR 2012	23 OCT 2013	<p>No - Is the number of Office cancels on record Type - (2) denotes Code 2 Diam - Diameter of circle Date 1 - Only date seen Note - Date as seen on postmark Comment - Latest date seen so far or comment on Postmark e.g. <i>Struck in Red</i></p>  <p>Type 23</p>  <p>Type 1</p> <p>Editorial Comment Previously each update begins with the same jargon...<i>will continue from previous checklists and will use the same Classification System...</i> Question - What previous checklist, what classification, where does the reader find this? Type 23 M 24(3) does anyone know what M 24(3) means? The foregoing raised a heated exchange of words at the AGM and went no-where. <i>Do you the reader know what is being imparted to you?</i></p> <p>In the past this would have filled 15 pages of the journal and offered no supplementary information.</p> <p>This column provides sufficient space for any relevant comment on any of the postmarks listed.</p> <p>Constructive comment invited</p>
BOSEJA	13	23 M 46(2)	42	7 NOV 2013		
BROADHURST	43	23 M 46(3)	40	2012-11-23		
BROADHURST	44	23 M 46(8)	40	2014-04-22		
FRANCISTOWN	87	23 M 46(2)	42	23 JUL 2013		
GABORONE	319	23 M 60(3)	41	2013-03-26		
GABORONE	320	23 M 60(11)	41	2012-12-12		
GABORONE	321	23 M 69	41	10 JUL 2013		
GHANZI	26	23 M 46(5)	41	13 NOV 2013		
GUMARE	7	23 M 46(1)	40	2013-11-11	In Red	
GUMARE	8	23 M 46(2)	40	2014-10-23		
GUMARE	9	23 M 39	40	2014-10-22		
JWANENG	46	23 M 71	40	2011-11-14		
KANG	13	23 M 46(1)	41	13 NOV 2013		
KASANE	26	MISC 3z 12(2)	39	2013-11-04		
KASANE	27	MISC 3z 14	39	2013-11-23	In Green	
LECHENG	5	23 M 46(1)	42	30 OCT 2013		
LETLHAKANE	18	1 M 26(3)	36	28 OCT 2013		
LETLHAKANE	19	23 M 46(3)	40	2012-??-10		
LETLHAKENG	9	23 M 46(2)	38	11 OCT 2013		
LOBATSE	62	1 M 24(4)	38	04 NOV 2013		
LOBATSE	63	23 M 24(10)	40	2013-04-05		
MAHALAPYE	45	1 M 26(2)	37	1 NOV 2013		
MAHALAPYE	46	23 M 46(2)	40	8 AUG 2013		
MAHALAPYE	47	MISC 3z 13	37	27 NOV 2013		
MATHUBANTWA	10	23 M 24(1)	40	?? NOV 2013		
MATHUBANTWA	11	23 M 46(3)	39	24 JUN 2014	In Blue	
MAUN	66	23 M 46(6)	41	31 OCT 2013		
MAUN	67	23 M 50	40	2013-10-25		
METSEF	2	23 M 50	40	11 NOV 2013		
METSIMOTLHABE	1	61 M 34	30x54	28 NOV 2013	Oval cancel	
MIDDLEPITS	11	23 M 70	42	12 NOV 2013		
MMASEKOU	19	23 M 46(4)	41	20 AUG 2013		
MOCHUDI	31	23 M 46(2)	40	28 OCT 2013	In Purple	
MOCHUDI	32	23 M 71	40	25 OCT 2013		
PALAPYE	36	23 M 46(3)	41	2013-10-17		
PALAPYE	37	23 M 71	41	16 OCT 2013		
POSO HOUSE	1	23 M 73(1)	39	2013-06-25		
POSO HOUSE	2	23 M 73(5)	39	2014-06-27	In Green	
POSO HOUSE	3	23 M 73(8)	39	2013-07-12		
POTA	16	MISC 3z 8(1)	39	11 APR 2012		
RAKOPS	5	23 M 68	39	2 AUG 20??		
RAMOKGWEBANA	10	23 M 63	39	2013-11-13		
RAMOTSWA VILLAGE	16	23 M 46(2)	39	2013-11-12		
SELEBI - PHIKWE	60	23 M 73(3)	41	10 SEP 2013		
SELEBI - PHIKWE	61	MISC 3z 15	39	16 OCT 2013		
SEROWE	43	1 M 24(1)	36	08 NOV 2013		
SEROWE	44	1 M 24(6)	36	23 OCT 2013		
SEROWE	45	1 M 27	36	12 NOV 2013		
SHOSHONG	11	23 M 70	38	2013-11-11		
SOJWE	9	23 M 68	39	2013-11-06		
TAUNG	6	23 M 24(3)	40	12 NOV 2013		
TONOTA	15	23 M 46(1)	39	2013-10-25		
TSABONG	15	23 M 46(2)	42	30 OCT 2013		
TSABONG	16	61 M 16	36x56	2013-10-09	Oval cancel	
TSABONG	17	23 M 74	38	2013-11-18		
TSHESEBE	9	23 M 16	38	2013-11-04		
TUTUME	9	23 M 46(2)	39	2012-06-29		
TUTUME	10	23 M 46(2)	42	28 MAR 2014		
TUTUME	11	23 M 50	42	26 NOV 2013		

Botswana - Fifty Years of Stamps Part I

By Otto Pectoom



1882 - 1885
Stellaland



1885 - 1895
British Bechuanaland



1888 - 1966
Bechuanaland Protectorate



1965 Self Government



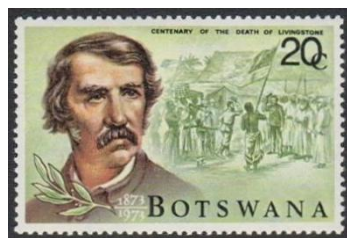
1966 Independence
Botswana

Preamble - This article briefly reviews events leading up to Independence in 1966. Although the intention of Part I is to review fifty years of definitive stamp issues from the Republic of Botswana. In order to do justice to the introduction and certain events I resort to commemoratives for illustration purposes in order to enhance the text.

Bechuanaland - Botswana

A Stroll through History 1800 - 1966

1800 - 1899



By the 1800's the Kwenya people had established permanent settlements and David Livingstone began missionary work during the 1840's.

Dr David Livingstone

During the 1860's the Tswana people appealed to British for protection against enemies and in 1867 European gold prospectors arrived and mining began.

In 1882 - The Boer Republic of Stellaland was proclaimed and in 1884 they issued five stamps 1d, 3d, 4d, 6d & 1s. The Warren expedition terminated the Boer Republics of Goshen and Stellaland and on 30 September 1885 Stellaland and the territory south of the Molopo river proclaimed British Bechuanaland and a Protectorate declared north of the Molopo. Stellaland stamps continued in use until 2 December 1885 and Cape of Good Hope stamps overprinted British Bechuanaland placed on sale at the Vryburg post office. In 1890 the British Protectorate was extended to the Chobe river.



Chiefs Sebele, Bathoen and Khama

A set issued 13 October 1975 SG 351 - 353 (Three values) With a 6c - Map of the country, the 10c depicting Chief Khama 1895 and the 25c with the three Chiefs.

A Brief Railway History - Before Rhodesia was granted its Royal Charter, Cecil Rhodes appreciated from the outset that a route from the Cape to Rhodesia had to go via British Territory which dictated a Cape - Bechuanaland - Rhodesia Railway line. At first the line from Cape Town terminated at Kimberley and by 1893 had reached Vryburg.

The Rhodesia Railway system started at Vryburg and was begun in May 1893. By October 1894 the line to Mafeking was complete. Then a distance of 263 miles to Palapye was reached in May 1897.

During construction the urgency of a rail link to Rhodesia was echoed by an outbreak of rinderpest and the 1896 Matabele Rebellion. The line was extended rapidly and in October 1897 reached Bulawayo, a distance of 590 miles from Vryburg and 1360 miles from Cape Town.

Historical Anniversaries - Bechuanaland

Railway Commemoration - Railway Centenary

24 May 1993 SG 771 - 774 Four values plus a Miniature sheet



Railway Centenary 12 July 1997 SG 846 - 852 Six values

Mafeking Gubulawayo Runner Post 21 August 1972
SG 294 - 297 Four values & a miniature sheet

Death Centenary of Dr Livingstone 10 September 1973
SG 308 - 309 Two values

Anniversaries 13 October 1975 - SG 351 - 353 Three values
Including 10c Chief Khama (1875), 25c Chiefs Sebele, Bathoen and Khama (1895) - See illustrations in previous column.



1885 Declaration



Botswana Police



Runner Post

Centenary of First Bechuanaland Stamps 24 June 1985
SG 577 - 581 Five values

Centenary of Botswana Police 5 August 1985
SG 582 - 585 Four values

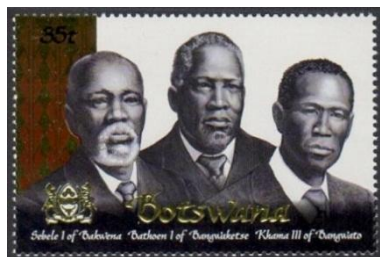
Centenary of Declaration of Bechuanaland Protectorate
30 December 1985 SG 590 - 593 Four values plus a MS

Botswana - Fifty Years of Stamps Part I

Historical Anniversaries continued

Centenary of Mafeking - Gubulawayo Runner Post

22 August 1988 SG 652 - 655 Four values and a MS



The Chiefs



Francistown Station

Francistown Centenary 21 April 1997 SG 842 - 845 4 values

Chiefs and Presidents 29 September 2000

SG 925 portrays Chiefs Sebele, Bathoen and Khama

1900 - 1965

In 1900 the Administration of the region was transferred to High Commissioner for Basutoland, Bechuanaland and Swaziland and in 1909 the people of the Bechuanaland Protectorate requested and received British assurance that they will not be included in a proposed Union of South Africa. In 1920 Two European councils are established consisting of advisory councils representing Africans and Europeans. In 1930 the Botswana Chiefs commence demands for national symbols and self-government and the British Government rejected such demands, claiming the Protectorate was not ready for Independence. That was followed by new proclamations to regularize tribal rule and powers in 1934. During the 1940's Independent churches and schools are established.

In 1950 the Chief of the Ngwato, Seretse Khama, is deposed and exiled by the British because of South African protest that the chief had returned home with an English wife and in 1952 rioters protested at Seretse Khama's exile.

In 1959 Copper mines are established in the country and political change starts in 1960 by the formation of the *Bechuanaland People's Party* (BPP). In December 1960 Britain approves a New Constitution for Bechuanaland and Executive, Legislative and African Councils are established and the following year Seretse Khama is appointed to Executive Council.

In 1962 Seretse Khama forms the *Bechuanaland Democratic Party* (BDP) which later becomes the *Botswana Democratic Party*. In 1964 Great Britain accepted the proposal for self-government and the following year Gaborone becomes the administrative centre. BDP wins legislative elections, the first to be held under universal adult suffrage and Seretse Khama is appointed as Prime Minister.

Stamp Issuing Policy prior to Independence

During the Protectorate era the Crown Agents dictated the subject for its stamp issues. Starting with the Reign of QEII the country issued the various Crown Agent Omnibus stamps which are the 1953 Coronation, 1963 Freedom from Hunger, 1963 Red Cross Centenary, 1964 400th Birth Anniversary of William Shakespeare, 1965 ITU Centenary, 1965 International Co-Operative Year and the 1966 Churchill Commemoration. Bechuanaland's first exclusive commemorative stamps was a single design in a set of three values issued on 21 January 1960 to commemorate the 75th Anniversary of the Bechuanaland Protectorate that came into being in 1885.



1960 Anniversary



1965 New Constitution

Before Independence, two further commemorative issues followed, a set of four using a common design for the New Constitution on 1 March 1965. Finally four different designs honouring the men who fought in World War II as the *Bechuanaland Royal Pioneer Corps*, issued on 1 June 1966.



1966 Bechuanaland Royal Pioneer Corps

Immediately after Independence, the overseas influence continued and certain subjects chosen for commemorative sets, such as the 1970 Centenary of Charles Dickens, has nothing to do with Botswana.

Printers

During fifty years of stamps Botswana had twelve definitive sets that were either printed by Harrison and Sons in London or Enschedé, Haarlem in the Netherlands. The commemoratives were produced by a host of eighteen printers, seven in Britain, three in Europe, three in Africa and the remainder overseas.

September 1966 Independence

Bechuanaland is granted independence and becomes Republic of Botswana with Seretse Khama as president.



30 September 1966

Set of four commemoratives issued

Presidents of Botswana



Sir Seretse Khama



Quett Masire



Festus Mogae

Sir Seretse Khama 1966 – 1980

He has been portrayed on eleven stamps and two Miniature sheets. SG 336 - 339, MS340, 362, MS366, 391, 493 - 496 and 926.

Botswana - Fifty Years of Stamps Part I - Definitives



Presidents of Botswana continued

Quett Masire 1980 - 1994, appears twice - SG 537 and 927.

Commonwealth Day President Masire

Festus Mogae 1998 - 2008 only seen once on a stamp - SG 928
Seretse Khama Ian Khama 2008 to date not portrayed as yet.

1997 - Presidency limited to two five-year terms

Relevant Independence Commemoratives

Fifth Anniversary 30.9.1971 SG 280 - 284 Five values

Tenth Anniversary 30.9.1976 SG 381 - 385 Five values

20th Anniversary 30.9.1986 SG MS603 MS only, 4 stamps

30th Anniversary - Nothing issued

40th Anniversary 29.9.2006 SG 1057- 1060, MS1061

Four values plus MS

50th Anniversary Set of stamps due in June 2016

1966 Stamps As a temporary measure, the 1961 Bechuanaland Definitives SG 168 - 181 (14 values, includes 8 bird stamps) were overprinted **REPUBLIC OF BOTSWANA** for use while Botswana's own definitive stamps were being printed in London by Harrison & Sons.



Police camel patrol



Grinding maize



African Hoopoe

1967 The first Bird Definitives SG 220 - 233 By Harrison

An attractive set of fourteen stamps was placed on sale on Tuesday 3 January and remained in use for seven years.



Trush



Secretary bird



Fish eagle



Hornbill



Cuckoo



Kingfisher

August 1969

The Bechuanaland Democratic Party (BDP) wins the general election. Seretse Khama is re-elected for another term.



Orapa Diamond Mine

During 1967 Diamonds were discovered at Orapa, located some 150 miles west of Francistown. The name means 'resting place for lions'.

1974 Third Definitive series by Enschedé SG 322 - 335

On Monday 1 July an interesting set of fourteen values depicting Botswana minerals came on sale. Due to a new national currency being introduced, this set had a short life in its original form. Two years later the remaining stock had to be overprinted indicating a new currency.



Agate



Citrine

June 1976 New National currency 100 Thebe = 1 Pula

The pula was introduced in 1976, replacing the South African rand at par and despite 12% devaluation in May 2005; the pula remains one of the strongest currencies in Africa. £1 = P16.62

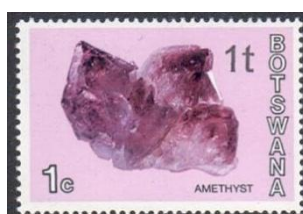
23 August 1976 Mineral definitives overprinted

All fourteen values (SG 367 - 380) were overprinted by letter press by the Government Printer in Pretoria.

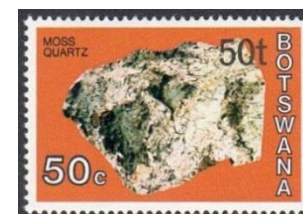
1977 - A year later another batch of six values was overprinted in Lithography by Enschedé in the Netherlands.

The two types of overprints are noted in the Stanley Gibbons catalogue as Type I (Pretoria) and Type II (Enschedé).

Type II was issued on 15 July 1977 and includes a 1t on 1c, 2t on 2c, 4t on 4c, 5t on 5c, 15t on 15c and 20t on 20c.



Amethyst



Moss Quartz

A second Pretoria printing during late 1977 is noted in the Stanley Gibbons *Southern & Central Africa* catalogue on four values being...a small stock returned from the Crown Agents. By the time the stamps arrived in Pretoria the surcharge type had been dispersed and when it was reset the position of the value figures was changed.

SG	Value	Date	Position of overprint
369a	3t on 3c	17.10.77	At bottom right
372a	7t on 7c	3.8.77	At bottom right
378a	50t on 50c	17.10.77	At bottom right
379a	P1 on R1	10.10.77	At bottom left

The rarity and value of the second Pretoria printing is much higher than the other overprints and the 50t on 50c rated as the most desirable. A collector in Botswana owns a commercial registered envelope with SG 378a and it is possible that it may be the only known example on cover.

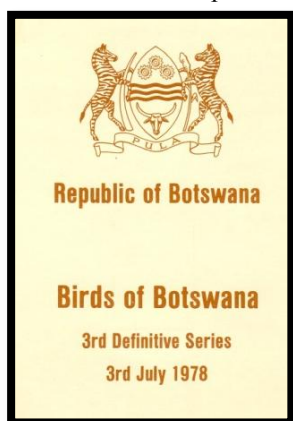
Botswana - Fifty Years of Stamps Part I - Definitives

3 July 1978 Second Bird Definitive SG 411 - 427

This set of seventeen values received its fair share of 'philatelic marketing' and was available in an elaborate Souvenir Folder.

Designed by the National Museum and Art Gallery for the Botswana Department of Posts and Telecommunications. A folded A4 booklet includes a mint set of the issue; each stamp is housed in a plastic sleeve.

The folder includes a map of the Country and on the last page a pair of first day covers is included. The folder was printed locally by Botswana Press - 5000 in total and only 2000 included the stamps and FDC's.



On the inside cover of the folder there is a write up by A.C. Campbell and each bird design includes a brief write-up.



Giant Kingfisher
Found in areas of tree-lined water. Feeds on fish, crabs & small frogs which it locates from a low perch.



Black-headed Heron
Solitary or in pairs, it can be found throughout the country. It feeds on mice, frogs, crabs, fish and insects, which it stalks.



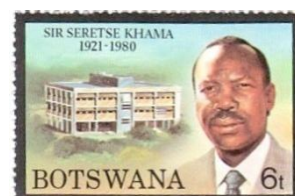
Saddlebill Stork
Wade back and forth seizing fish, frogs, crabs and even small mammals. They nest in high trees.



1979 October - General elections: Botswana Democratic Party wins majority, Khama is re-elected as president.

1980 - Botswana is founder member of Southern African Development Coordination (SADCC) Conference grouping which aims to reduce region's economic reliance on South Africa. President Sir Seretse Khama dies and Quett Masire, former vice-president, is made president after National Assembly vote.

13 July 1981 First Death Anniversary of the President



Sir Seretse Khama 1921 - 1980 - SG 493 - 496 Four values

1 September 1981 Surcharges SG 497 - 498

25t on 35t Heron

30t on 10t Woodpecker



1982 Another set of Bird definitives SG 515 - 532

In keeping with the previous issue, the designer is M. Bryan and the stamps printed by Harrison. Nine low values from 1t to 10t are vertical format and nine values 15t to P2 are horizontal.



Sunbirds



Gulls



Egret chicks



Plovers



Stilts

1984 September - General elections: the Botswana Democratic Party wins majority, Quett Masire is re-elected as president.

1 April 1987 Three values Surcharged - SG 612 - 614



3t on 6t Goose



5t on 10t Stork



20t on 50t Guinea Fowl

Botswana - Fifty Years of Stamps Part I - Definitives

1987 Animal Definitives SG 619 - 638

This issue marked a five year gap between new designs compared to four years on the previous two occasions. Twenty horizontal designs depicting Botswana wildlife, designed by P. Huebsch, printed by Harrison & Sons.



Lechwe



Striped Jackal



Zebra



Mountain Reedbuck

The set remained current for five years and due to a shortage of certain values, two sets of surcharges were produced.

1989 October - General elections; BDP wins majority. National Assembly re-elects Masire as president.

27 April 1990 Surcharges SG 690 - 692 (3 Values)



10t on 1t Cape Fox



20t on 6t Rusty Spotted Genet

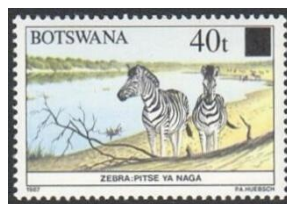
50t on 12t Hippopotamus

9 March 1992 Surcharges SG 725 - 728 (4 Values)

8t on 12t Hippopotamus, 25t on 6t Rusty Spotted Genet



10t on 12t Hippopotamus



40t on 3t Zebra

Surcharged Definitives

The Stanley Gibbons catalogue does not indicate who overprinted the 1981 to 1992 surcharges. The same holds good for subsequent surcharged issues. As there are no security printers in Botswana, the nearest is either the Government Printer in Pretoria or the firm in Zimbabwe.

1992 Lesser Mammals Definitive series SG 738 - 755



Zorilla



Warthog

3 August 1992 Lesser Mammals Definitives

Designs by Judith Penny - Printed in Photogravure by Harrison & Sons, London. Eighteen horizontal designs, current for five years. Four values surcharged on two occasions.

7 August 1994 Surcharge SG 792

10t on 12t Pangolin
By Government Printer
Pretoria, South Africa



1994 October - Legislative elections
BDP secures 53% of vote. Masire re-elected by National Assembly.

12 February 1996 Surcharges SG 817 - 819 (3 values)

20t on 2t Spring Hare



30t on 1t Cheetah

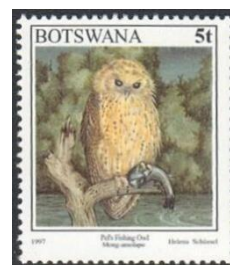


70t on 4t Blackfooted Cat

It is suggested that the overprinting was carried out in Zimbabwe and that the printers had considerable difficulties with alignment and slipped placements. Such as the 30t.

4 August 1997 Ninth Definitive SG 852 - 869

A fifth definitive bird issue, designs by Helena Schüssel. Printed in Litho by Enschedé, Haarlem - Netherlands. Eighteen values, half vertical and the other half horizontal designs. Enschedé printed all subsequent definitives for Botswana.



Pel's Fishing Owl



Shaft-tailed Whydah



Gymnogene



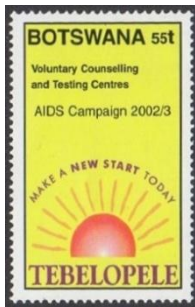
Sacred Ibis

March/April 1998 - Masire resigns as president and retires. Festus Mogae, formerly vice president, becomes president.

October 1999 - General elections, Botswana Democratic Party wins majority, Festus Mogae is confirmed as president and in **December** an International Court of Justice grants control of Sedudu-Kasikili - a river island disputed by Botswana and Namibia - to Botswana.

2000 February/March - Devastating floods: More than 60,000 are made homeless.

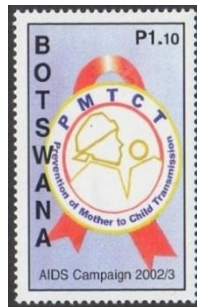
Botswana - Fifty Years of Stamps Part I - Definitives



Battle against Aids

2000 August

President Mogae says Aids drugs will be free of charge from 2001



2001 March - National diamond corporation, Debswana, says it will subsidise drugs for workers with Aids.

15 August 2002 New definitive, Mammals SG 974 - 989



Antbear



Elephant



African Civet

Designs by Judith Greenwood Penny - Printed in Litho by Enschedé, Haarlem, Netherlands. Sixteen values.

2004 March - HIV infection rate falls to 37.5%; Botswana no longer has the world's highest rate of infection.

October - President Mogae secures a second term in a landslide election victory.

26 April 2006 Surcharges SG 1048a & 1048b Two values



80t on 90t Reedbuck



P2-10 on 1p 95 Sable

80t on 90t with Surcharge Inverted, one used example known.

13 October 2007 Butterfly Definitives SG 1084 - 1097

Designs by Philip Huebsch - Printed in Litho by Enschede, Haarlem, Netherlands. An attractive and colourful set of fourteen horizontal designs.



Blue Pansy



Foxy Charaxes

2008 March - Botswana launches its own diamond trading company - the Diamond Trading Company Botswana (DTCB).

April - Seretse Khama Ian Khama takes over as president.

2009 April - Botswana says it will halve diamond production because of falling demands for gems.

October - Ruling Botswana Democratic Party wins elections and another 5-year term for President Khama.

November - Botswana stages a substantial economic recovery after stepping up diamond production again, a bank reports

2012 November - Government says it will ban the commercial hunting of wildlife from 2014, citing a sharp decline in animal populations.

11 January 2013 Surcharge SG 1185

1997 30t Kurrichane Thrush - Surcharged with P7. That creates a P7.30t value.



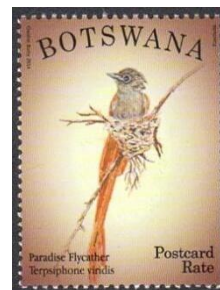
1997 Original 30t Definitive



2013 P7.30t Surcharge

2013 November - Global diamond giant De Beers completes the move of its rough stone sales operation from London to Gaborone, in what is seen as a step towards turning Botswana into one of the world's top diamond hubs.

13 May 2014 A sixth definitive bird issue SG 1192 - 1205



Designs by Gwithie Kirby Printed in Litho by Enschedé, Haarlem, Netherlands.

Fourteen values, nine vertical and five horizontal designs. Large stamps and in my opinion the least attractive of all the former bird definitives.

Some of the designs appear to sink into the background.

Paradise Flycatcher



Blue Waxbill



Bradfield's Hornbill

2014 October - Ruling Botswana Democratic Party (BDP) wins the general elections with 33 of the 57 seats, giving Ian Khama a second term as president.

1966 - 2014 Definitives 177 Designs - 57 Overprints

Two definitives were of a temporary nature, 1966 SG 206 - 219, because Independence was suddenly a reality; it took time to arrange the first National definitive set.

1976 - 1977 SG 367 - 380, the overprinted Mineral series became a necessity after a self determining decision to abandon the South African Rand and introduce Botswana's own National currency.

Twelve definitive issues, totalling 220 stamps that include 95 bird stamps. Overprinted on Bechuanaland (14), depicting Birds (81), Animals (54), Butterflies (14), Minerals (14) New Currency overprints (24) and Surcharged stamps (19).

All the Botswana Stamp issues may be viewed on the *Bechuanalands and Botswana Society* website - Go to... www.bechuanalandphilately.com/Botswana_Definitives.htm

My thanks to Sheila Case for her input and helpful suggestions.

Part II in this series will review 50 years of commemoratives.

Bechuanaland Protectorate - Rarer Stamps - Numbers Recorded

By Brian Hurst and Steve Wallace

Notes - The illustrations for SG 49a, SG50 var, SG 52b and SG 55b is reproduced by gracious permission of HM The Queen, to whom copyright belongs.

The assistance of Michael Sefi (the Keeper of the Royal Collection), Alan MacGregor and John Coates in the preparation of this study is gratefully acknowledged.

L = Example in the British Library Collections

R = Example in the Royal Philatelic Collection

B = Example in the Botswana Postal Museum

SG 44a - 4d on 4d lilac and black - Small figure '4'

Number recorded - Two mint & two used



This rare stamp has occasionally been incorrectly identified. In the genuine the height of the '4' measures 2.15mm and its apex is directly below the first 't' of 'Protectorate'. Additionally there is normally an attenuated curve to the top of the first 'r', a missing top to the second 't', a small break in the upright of the third 't' and also a weak break at the top of the diagonal stroke of the '4'.

The variety plates to R7/12 of the setting.

SG 47a - 2s green and black - First 'o' omitted

Number recorded - Three mint

Bechuanaland Government records show that just five sheets of the 2s. Unappropriated Dies stamp were overprinted, therefore theoretically five examples of SG 47a are possible.

One, formerly in the *Holmes* collection has a type BEC1 *Specimen* handstamp.

Of the remaining four, just three have been observed, one of which is in poor condition.

It should be noted that it is common for a small section of the lower part of the 'o' to faintly present itself on the first 'o' omitted variety of all values.



SG 48a - 2s 6d green and black - First 'o' omitted

Number recorded - Three mint

Three sheets of the 2s 6d. Unappropriated Dies were overprinted. All three possible examples of the variety are known, one of which is in the *Royal Collection*. As with all values of this variety it plates to R5/12 of the setting.



SG 49a - 5s green and black - First 'o' omitted

Number recorded - Two mint

Two sheets of the 5s. Unappropriated Dies were overprinted. Both possible examples are known, one of which is in the *Royal Collection*.



SG 50 variation

10s green and black

First 'o' omitted

Number recorded - One mint

Since it is recorded that only a single sheet of the 10s value was overprinted, it follows that only a single example of this variety can exist. This is in the *Royal Collection*.

SG 51a - 4d on 4d lilac and black - 'Protectorate' double

Number recorded - One used



A single used example has been discovered with a semi-albino second impression of 'Protectorate' this is positioned just above and well to the right of the main overprint, the 'P' being above the 'ec' of the well-inked one. The semi-albino impression slopes down slightly from left to right.

SG 52ac - 1/2d grey-black, overprint in green

Overprint double, one reading 'Bechuanaland' only

Number recorded - Five mint



Six examples of this variety would have occurred across row 6 in a pane of 60 stamps, one of the double overprints being so displaced that 'Protectorate' has shifted to the stamps of rows 7 to 10, creating the variety SG 52ab, overprint double, one reading 'Protectorate Bechuanaland'

One example of each in the *Royal* and *British Library* Collections.

SG 52b - 1/2d grey-black, overprint in green

Overprint single, 'Bechuanaland' omitted

Number recorded - Three mint

Two copies in the *Royal Collection* and one in the *Botswana Postal Museum*.



Six examples of this stamp possible, probably from the top row of a pane of sixty. The four lower rows immediately below would exhibit the error of overprint reading 'Protectorate Bechuanaland' - SG 52c.

SG 52c - 1/2d grey-black, overprint in green

Overprint reads 'Protectorate Bechuanaland'

Number recorded - Two mint & one used



There are 24 possible of this stamp. However, it seems to have been issued at Ramoutsa Post Office and remained undiscovered philatelically at the time. Hence the extreme rarity of the stamp. One mint copy in the *Botswana Postal Museum*.

Bechuanaland Protectorate - Rarer Stamps - Numbers Recorded



**SG 53a 4d on 1/2d vermilion
'rpence' omitted**
Number recorded 1 mint - 4 used (R)

It is likely that this variety where part of the word 'Fourpence' has been omitted

It has been caused by the intrusion of a foreign body in the printing press. Hence there are variations in how much of the word is missing. This ranges from 'Fo' at one extreme as exhibited by the used copy in the Royal Collection, through to the presence of a fragment of the letters 'r' and 'p' as in the mint copy illustrated.



**SG 53b 4d on 1/2d vermilion
'ourpence' omitted**
Number recorded 1 mint - 2 used (B)

Plated as ex R9/2 of the setting as has SG53a above. It follows that both varieties may have similar status.



SG 53cb 4d on 1/2d vermilion.
Surcharge inverted, 'ourpence' omitted

Number recorded - One single used example of this variety recorded



SG 53var 4d on 1/2d vermilion
Surcharge in green
Number recorded - Seven Used (2x B)

A small number of stamps exist with the surcharge in matt with a greenish-black surcharge.

This is believed to have been caused by faulty cleaning of the inking roller. All known copies are cancelled at Shoshong.



**SG 54d 1/2d vermilion - Overprint
'Portectorate' inverted**
Number recorded - 3 mint (L)
one used - Royal collection

Rare spelling error only known inverted



**SG 55b 1/2d vermilion, 19mm
overprint error 'Protectorrte'**
Number recorded 2 mint (R)

The 19mm 'Protectorate' overprint was an initial trial run made in June 1888 and quickly abandoned due to the

inability of the printer to accurately control the position of the overprint. This error of spelling occurs once on each sheet in an unknown position. Since it is present in the Royal Collection as the right hand stamp of a strip of three it cannot be from the first two columns of the setting.



**SG 55c 1/2d vermilion, 19mm
overprint error 'Protectorrte' double**
Number recorded 1 mint

SG 55c (continued) It seems that the printer produced an initial semi-albino overprint to determine the overprint's position on each stamp. Having made any necessary corrections he overprinted the sheet a second time fully inked. The semi-albino impression is positioned just below the inked one and can be quite difficult to see.



**SG 69a 2 1/2d ultramarine Stop after
'P' in 'PROTECTORATE'**
Number recorded 5 used

One copy in the Botswana Postal Museum

This stamp qualifies for inclusion in the Rare Stamps Study in postally used condition only.



**SG 99a
1/2d green,
imperforate
between horizontal
pair**

Number recorded
A damaged pair plus a block of four

1945 3d Victory SG 131a - Overprint omitted (in vertical pair with normal) All known examples are vertical strips of 4 with top margin, with the overprint missing on the top stamp. One example is a top left corner vertical strip of 4 with full margins. At least one other strip is known from the bottom of the sheet showing the word 'Bechuanaland' in the lower margin as a result of the displacement of the overprint that gives rise to this error.

Argyll Etkin 'County' Sale 24 September 2003. Matching strips of four from the top and bottom of the sheet, as described above, offered in lots 1344 and 1343. These items may be viewed on the society's website. The top strip, with overprint omitted, was re-offered in Murray Payne auction No 24 on 25 January 2016 as lot 90, estimated £15,000 and unsold.

1955 QEII Overprint errors, SG 159b and SG 163a will feature in our next Journal No 93.

OTTO PEETOOM (ORMSKIRK STAMPS)

Rectory Road, Roos,
East Yorkshire, HU12 0LD - UK

TEL: +44(0)1964 670239

Fax +44(0)1964 671204

Email: ottopeetoom@btinternet.com



We produce comprehensive lists for

The Rhodesias plus Nyasaland www.rhodesianstamps.net

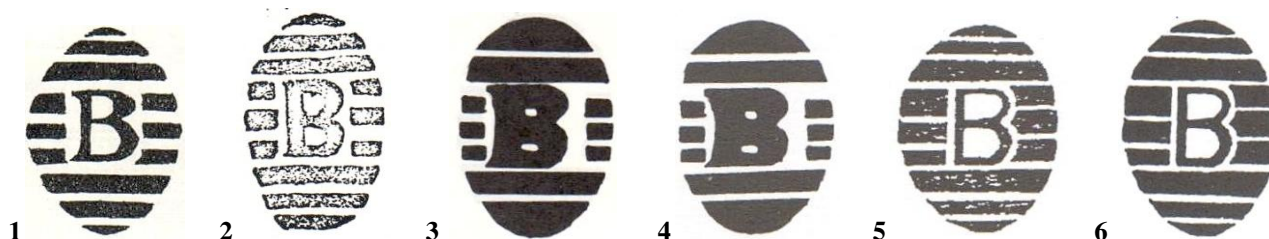
Southern Africa - Includes Bechuanaland
www.southafricanstamps.net

GSWA - South West Africa www.swa-stamps.com

East Africa, KUT www.kut-stamps.com

The Oval Barred B (Killer cancel)

By Otto Peetoom and Tony Stanford



Introduction

In the early 1985/6 editions of *The Runner Post* (No's 1, 3 and 5) a Barred B cancel was illustrated and followed up with much speculation and debate, as to whether it was, either a Cape, Rhodesian or a Bechuanaland mark.

Tony Stanford sent in a short piece and remarked... *Reports in these early RP's indicate that this is not a Cape nor a Rhodesian postmark and is not the barred oval B used in early Bulawayo...I hope that now after all these years some members may have more information about these cancels and maybe examples in their collections of the cancel...*

Understandable Confusion

Knight and Mitchell's remarks were published in RP No 3, and at the time, put the cat amongst the pigeons by stating the Barred oval B was not a Rhodesian mark. An additional illustration, pasted in their 1984 book on page 139, suggests that they did consider it as a Rhodesian mark.

The alleged problem becomes clearer when it is taken into account that there are at least two different barred oval B cancels, they vary in size and each has its own type of 'B' plus the number of horizontal bars is not the same. In Otto's opinion this cancel was used at Bulawayo and it is therefore not surprising to encounter the oval B on Bechuanaland and Rhodesian stamps.

Illustrations of the oval B

Several authors used different illustrations which add to the ongoing confusion. In the September 1936 GSM Bernard Livermore produced a three page article *The Postmarks of Bulawayo*. He includes drawings of postmarks that features a barred **B** with three horizontal bars above and below the 'B' and wrote...*A very large 'B' was used in Bulawayo, as a large piece in my collection very fortunately proves this.*

In the 10 November 1956 edition of *The Stamp Collectors' Fortnightly* W.G. Nodder illustrates an oval with the same number of horizontal bars but with a different type of **B**. Nodder wrote...*used at Bulawayo, chiefly to cancel stamps on parcels, normally very heavily impressed.*

Knight & Mitchell (1984 Book) repeat Livermore's **B**, but with only two bars above & below.

J. & J. Barry in *The Postmarks of Rhodesia* (1998) illustrates both types, a **B** with two bars above and below and **B** with three bars above and below.

South of the Zambesi (2003) - Hoyte and Lashbrook list two types as 3A.1 B 10mm high, 9 bars and 3A.2 B 9mm, 7 bars.

Illustrated - 1. Livermore, 2. Nodder, 3. Knight & Mitchell, 4. Barry(1), 5. Barry(2) and 6. Hoyte & Lashbrook



2016 Schedule **March** *The African Elephant in Botswana*, the fourth issue in a series of *Big Five in Botswana*
May *Traditional Dance in Botswana* - 4 stamps
July 50 Years of Progress

20 November 2015

Vervet Monkey in Botswana (Four values plus a MS)



Poso House Khama Crescent Gaborone Botswana
Telephone +267(0)395 2806 Fax +267(0)397 4424
Email philatelic@botswanapost.co.bw
Website www.botswanapost.co.bw



Recent Botswana Issues



Reported in our last issue, but not illustrated - 20 November 2015 - Vervet Monkey in Botswana (Four values plus a MS)
Should be SG 1246 - 1249 plus MS 1250 (large stamps 60 x 30mm - MS 140 x 120mm)

The First 2016 Issue in March

No specific date advised *The African Elephant in Botswana*, the fourth issue in a series of *Big Five in Botswana*.
Four values (P4, P5.90, P7.80 and P10) plus a miniature sheet

---000---

Bloemfontein, Bloemfontein where art thou?

In late March Kevin Corrigan in Bloemfontein (die Stad in die Vrijstaat) sent me a scan of a Two Pence British Bechuanaland stamp with a part strike of a single circle Bloemfontein with a ? 6 90 date. It appears that the two horizontal lines to the left of 6 might denote an E thus possibly FE or DE (February or December) - This example was included in the Holmes Harpers sale on 29 October 1981 as lot 1330. The leaning six appears to be an inverted '9'.



Three Bloemfontein's - Putzel, in his *Encyclopaedia of South African Post Offices and Postal Agencies* (Volume I), lists three locations for Bloemfontein.

BLOEMFONTEIN 1882 - 1887, Cape (H/O division of Namaqualand, Calvinia) PA listed by 1882, renamed *De Hoop* on 1.1.1887.

BLOEMFONTEIN 1890 - 1893, British Bechuanaland (H/O Gordonia) PA open 1890 (Holmes) closed about end 1893.

BLOEMFONTEIN 1850 - Current, OFS, Corrigan Country!

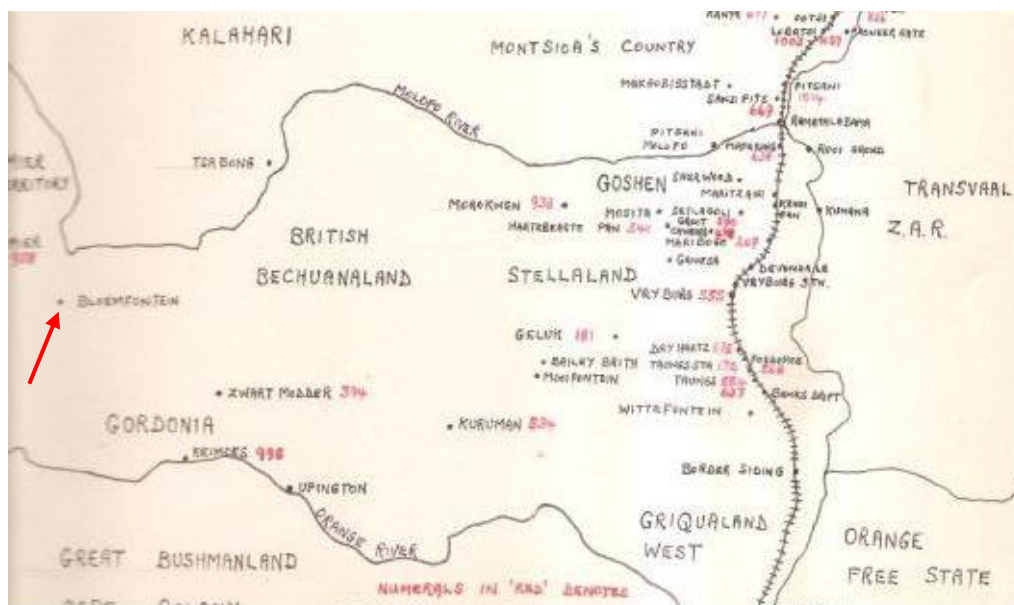
Holmes (page 76 in his book) stated *A Postal Agency was opened in 1890, but it did not have a long life, as it was closed in 1894, perhaps earlier...*

Brian Trotter in *The Runner Post* No 28 (September 1992) page 552 gave two dates OC 20 90 and ? 5 92. Is Brian's drawing of a BLOEMFONTEIN OC 20 90 a replica of such a cancellation?

The Members Respond

A general email brought in a response from Brian Fenemore who sent in a portion of a map showing the location of Bloemfontein in British Bechuanaland, SE from Mier and NNW of Keimoes.

Brian also has an example of the cancel dated JY 14 92 - Illustrated at right.



Brian wrote...*Bloemfontein (farm) on the camel route to Mier, is situated approximately 100 kilometres NNW of Zwart Modder in the Gordonia district of the extreme northern Cape Province. Now known by the farm name of 'Bokhara'. The original farm was owned by the Steyn brothers attorneys in British Bechuanaland days*

Peter Thy sent in an extract from an article published in the PSGSA journal *Forerunners*. In issue No 49 (2004) it notes... used between OC 20 90 and 1892.

The general consensus is...less than ten copies known.

ALAN MACGREGOR

A Highlight from the Hurst Collection



BECHUANALAND PROTECTORATE

1890 'Trial' overprints. Lower marginal mint block of nine, all with the overprint inverted. The centre stamp additionally showing the error of spelling 'Portectorate'. SG 54, 54d). One of the rarest stamps of the Bechuanalands. Spectacular and outstanding.

Note: Four examples of this error are recorded of which only two are in private hands: a mint single and the example in the block of nine above. The Royal Philatelic Collection contains an example within a used block of four, and the Mosely collection within the British Library has an example within a vertical mint strip of three

The Brian Hurst Collection

Alan MacGregor is delighted to announce the acquisition of Brian Hurst's Collection of the Bechuanalands. The collection focuses primarily on overprinted stamps, from the 1885 Cape issues through to QEII decimal surcharges. With numerous extremely rare and unique items, superbly written-up, it ranks amongst the best Bechuanaland collections ever formed with sections being awarded gold medals at various British Exhibitions. Over the years, Brian's original research into the various overprinted and surcharged issues made significant contributions to our knowledge of these fascinating issues and resulted in many revisions and additions to the Stanley Gibbons catalogue.

PO Box 515, Simons Town, 7995, South Africa

Tel +27(0)21 786 1931 - Fax +27(0)21 786 1925

Email alan@rhodesia.co.za

www.rhodesia.co.za